

Artemide®

OUTDOOR 2018 - 19



Artemide[®] America

CONTENTS

INTRODUCTION

- 05 The Human Light
- 07 Outdoor Catalog
- 13 Designers

PRODUCTS

- 14 Outdoor

TECHNICAL AND COMPANY INFORMATION

- 128 How to Read the Catalog
- 129 Terminology
- 131 IP Rating
- 132 Index
- 134 Artemide America



THE HUMAN LIGHT

Founded in 1959 by Ernesto Gismondi and Sergio Mazza, Artemide's guiding philosophy is "The Human Light" which places humanity and its well-being at the core of research, development and design. For over half a century, Artemide has been synonymous with Design, Innovation and "Made in Italy."

Artemide's products do not conform to trends or fads; rather, a combined commitment to technological innovation and traditional hand-craftsmanship underlines Artemide's quest to satisfy the human need for lighting which is both purposeful and delightful.

When creating lighting for outdoor use, Artemide gives careful consideration to environmental needs. Beginning with the design stage and progressing along all phases of manufacture and intended use, Artemide's product range strives for aesthetic and earth-friendly excellence.

The Human Light: for the wellness of humanity and the earth.



OUTDOOR CATALOG

This pocket-sized catalog is a condensed version of our full offering intended to provide an introduction to Artemide Outdoor's comprehensive line, therefore all available options and full specifications may not be contained within.

As we strive to provide the latest technology, particularly LED, updates are frequently made across our line. Fully updated technical specifications and product information may be obtained via **www.artemide.net** or by contacting your Artemide showroom, Sales Representative or authorized dealer.

THE HUMAN LIGHT GOES OUTSIDE

Artemide develops comprehensive lighting solutions for the built environment. All designs with the Artemide Outdoor lighting range respect the environment they illuminate.

The Artemide Outdoor collection is suitable for all architectural applications professional and domestic. Amongst the offering are products for the following use:

- scenic enhancement and illumination of facades
- functional lighting along pathways, bikeways and in parks
- illumination of urban shared social space in any sized urban or metropolitan gathering place
- high IP value requirement areas where moisture is a factor, such as wellness centers or swimming pools

LIGHT THAT IS RESPECTFUL OF THE ENVIRONMENT

Artemide strives to develop lighting for outdoor use that is respectful of the surrounding environment and nature. It is important to provide only the necessary amount of lighting in nature, so not to disturb the natural circadian rhythm that is crucial for all species. Artemide uses this approach to create lighting solutions that are not only functional, but also energy-smart and interactive. Continual research and the incorporation of technology like motion sensors allow the further development of products that are in favor of both man and nature.

TECHNICAL DESIGN & SUPPORT

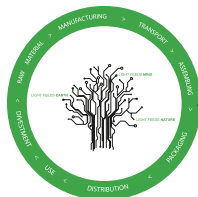
With 55 lighting consultancy centers worldwide, Artemide offers complete service to support lighting engineering plans. 2D, 3D and IES files are available upon request along with all necessary technical information required to implement any lighting project from design to installation.

Please contact our technical team through your local Artemide showroom,
www.artemide.net or authorized dealer.

SUSTAINABLE MANUFACTURING & APPLICATION



Long focused on sustainability, Artemide is certified ISO 9001:2008, ISO 17025 and WMT at its French manufacturing plant Megalit; as well as accredited with ISO 14001 and has implemented the Carbon Footprint. Artemide's manufacturing focuses on product lifecycle (LCA) from design, raw material choice, minimized transportation for processing and through assembly, packing and disposal. Improved operational light fixture efficiency creates energy savings, reliability, length of use and consequent reduction of CO₂ emissions. All Artemide fixtures comply with European environmental standards and bear the CE mark.



LCA (Life Cycle Assessment)

LCA is a strategic approach used to assess the potential environmental impact that a product has during all the stages of its life cycle: selection of raw materials, processing, transport and assembly, packaging, distribution, use, disposal and recycling.

LED TECHNOLOGY

With lengthy experience using LED for indoor lighting fixtures, Artemide applies the same technological innovation in their outdoor products, achieving the following economic and environmental advantages:

- high light efficiency
- low energy consumption
- reduced CO2 emissions
- limited raw material use
- reduced manufacturing waste
- non-toxic material usage
- reduced packaging size and weight reduces transportation requirement
- component recycling
- low voltage safety compliance
- shock and vibration resistance limiting wear and tear and need for repair
- compliance with LED best practices for correct and lasting use of heat dissipation system
- usage, advanced electronic component implementation and refined optical light delivery systems.

OUTDOOR MATERIALS & FINISHES

Design and manufacture of all Artemide Outdoor appliances meets the highest technological standards for optimal aesthetics and operation.

All products undergo the following tests:

- Saline fog tests to evaluate corrosion resistance
- UV radiation exposure tests to evaluate their behavior when exposed to sunlight
- IP tests to evaluate the fixture waterproofing
- IK tests to evaluate shock resistance
- Load tests for walk-over and drive-over built-in fixtures.

PAINTING PROCESS

The surface treatment of an outdoor lighting fixture is critical for ultimate operational capability. Extreme atmospheric conditions and diverse weather exposure must be prevented from deteriorating a fixture in any way. Artemide operates their own painting facilities which ensure full compliance with RoHS RAEE standards and quality conditions.

The painting plant cycle is provided with a pre-treatment tunnel that includes 6 stages of iron phosphate treatment and a rinse process together with a nanotechnological spray passivation process, consisting in the deposit of diamond structured molecules. This is useful to prepare the fixture for the application of the anti-corrosion epoxy powder primer through an electrostatic application system with dedicated spray cabins. Once the polymerization has been completed through the dry oven, the powder paint finish with a polyester-free base is applied. This application is carried out after the dry oven and reticulation at 190°C (374°F).

Le Pilori Restaurant, Ecaussinnes, Belgium. Photo by Emmanuel Bosteels.



DESIGNERS



Artemide
Klauss Begasse
Carlotta de Bevilacqua
Elemental

Giancarlo Fassina
Ernesto Gismondi
Arik Levy
Michele de Lucchi

Daniele Moioli
Alessandro Pedretti
Massimo Sacconi

Artemide® OUTDOOR



Aria

16



Calumet Ceiling

18



Calumet Wall

20



Cefiso

22



Chilone Ground

26



Chilone Wall

32



Ciclope Ground

34



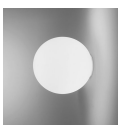
Ciclope Wall

36



Cuneo

38



Dioscuri

40



Effetto Round

44



Effetto Square

46



Ego Downlight

48



Ego Drive-Over

50



Ippolito

52



Logico Garden

54



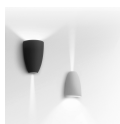
Logico Triple Garden

56



Minispot

58



Molla

60



Niki

64



Nuda

68



O Ground

72



O Suspension

78



Obice

82



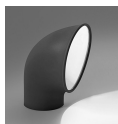
Oblique Ground 84



Oblique Wall 86



Pantarei 88



Piroascafo 90



Reeds 94



Tetragono Ground 100



Tetragono Wall 104



Tolomeo Mega Outdoor Ground 106



Tolomeo Mega Outdoor Hook 108



Tolomeo Mega Outdoor Suspension 110



Tolomeo Outdoor Lantern Ground 114



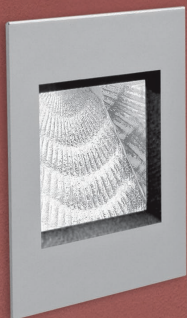
Tolomeo Outdoor Lantern Hook 116



Tolomeo Outdoor Lantern Suspension 118



Tolomeo XXL Ground 120



ARIA

Massimo Sacconi
2012



white



grey



black
(mini only)

models: micro, mini





CALUMET CEILING

Ernesto Gismondi
2012



sizes: 8, 13





CALUMET WALL

Ernesto Gismondi
2012



anthracite
grey



white
RAL9002

sizes: 8, 13





reddot design award
winner 2012

CEFISO

Alessandro Pedretti
(Studio Rota & Partners)
2012



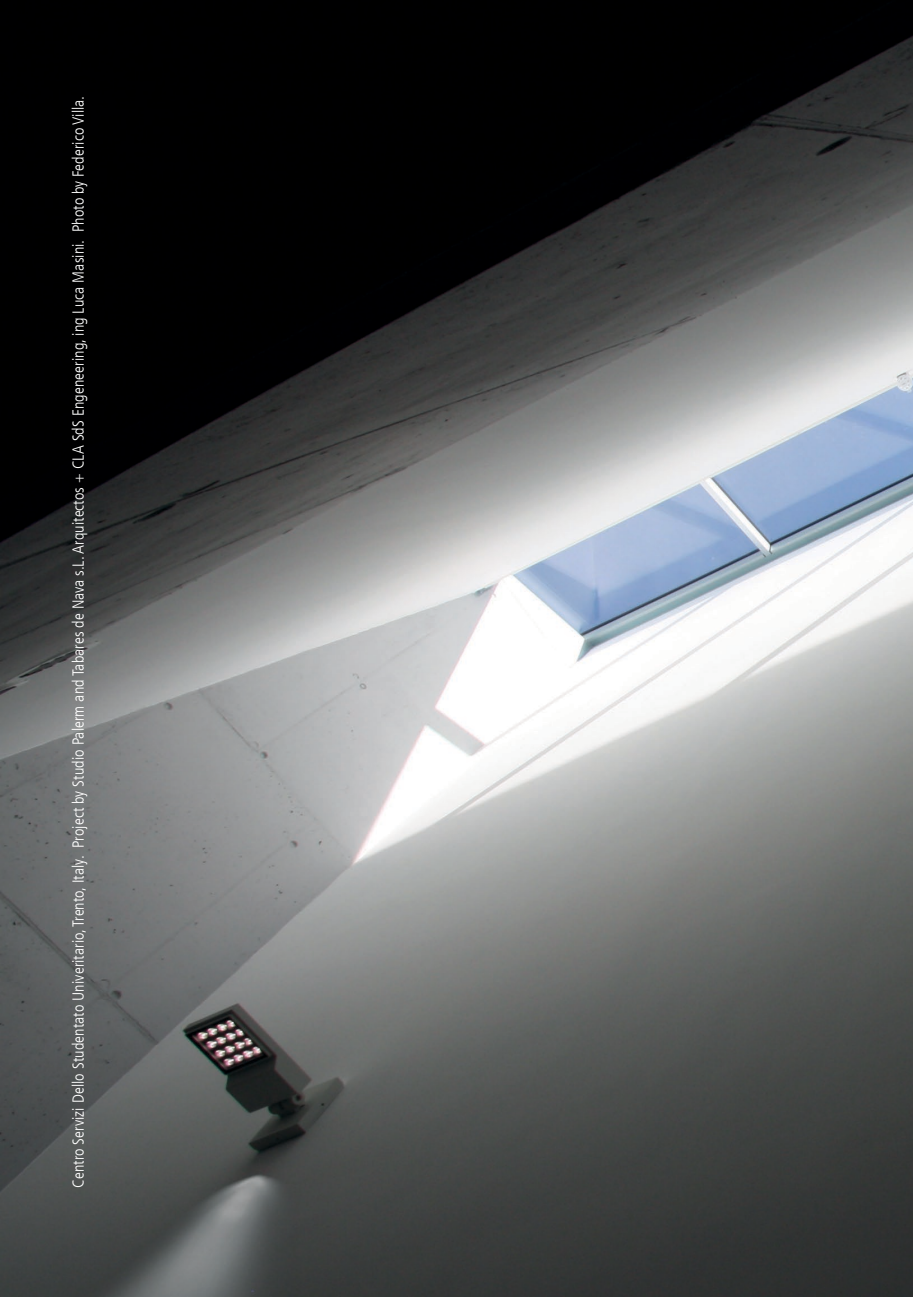

anthracite
grey


white
RAL9002

sizes: 14, 20



Centro Servizi Dello Studentato Universitario, Trento, Italy. Project by Studio Palerm and Tabares de Nava s.r.l., Arquitectos + CLA SdS Engineering, ing Luca Masini. Photo by Federico Villa.







CHILONE GROUND/POLE

Ernesto Gismondi
2009



white
RAL9002

anthracite
grey

sizes: 45, 90, pole
models: up, standard









MODERN

CHILONE'S MINIMALISTIC DESIGN
AND ANGLED ARCHITECTURAL
FORM DECORATES ANY SPACE
WITH A SUBTLE, YET CHIC
CONTEMPORARY ACCENT.



CHILONE WALL

Ernesto Gismondi
2009



white
RAL9002



(IP65)

ULUS



CICLOPE GROUND

Alessandro Pedretti (Studio Rota & Partners)
2009



white
RAL9002

anthracite
grey

sizes: 50 floor, 90 floor
models: unilateral, bilateral





CICLOPE WALL

Alessandro Pedretti (Studio Rota & Partners)
2009



white
RAL9002



anthracite
grey



(IP65)

UL US



CUNEO

Klauss Begasse
2010



white
RAL9002

sizes: mini, classic
models: wall, floor





DIOSCURI

Michele de Lucchi
2000



white
glass

sizes: 25, 35, 42





VERSATILE

SUITED FOR INDOOR OR
OUTDOOR USE, DIOSCURI IS
CRAFTED OF A HANDBLOWN
GLASS DIFFUSER IN A WIDE
RANGE OF SIZES.



*Featured color available by special order only

EFFETTO ROUND

Ernesto Gismondi
2013



white
RAL9002



anthracite
grey

models: 1 narrow and 1 large beam
1 narrow or large beam
2 narrow or large beams
4 narrow or large beams





EFFETTO SQUARE

Ernesto Gismondi
2013



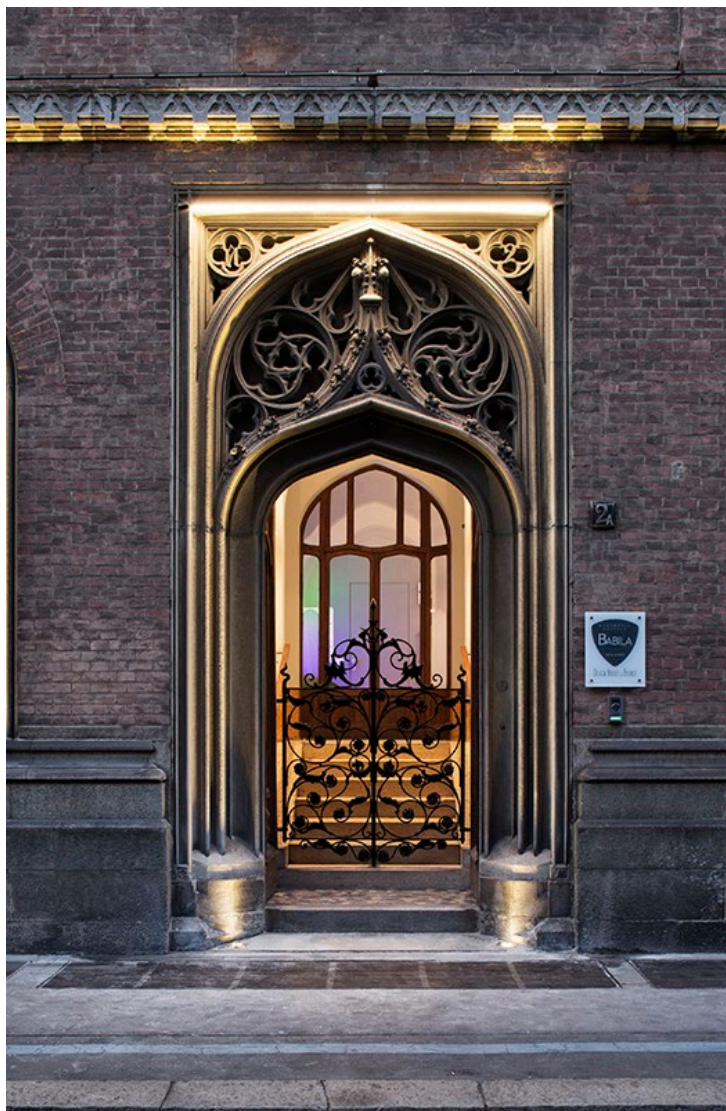
white
RAL9002



anthracite
grey

models: 1 narrow and 1 large beam
1 narrow or large beam
2 narrow or large beams
4 narrow or large beams





EGO DOWNLIGHT

Ernesto Gismondi
2012




white
RAL9002


stainless
steel

sizes: 55, 90, 150
models: round, square



Milanofori Residential Complex, Assago-Milan, Italy. Project by OBR – Paolo Brescia, Tommaso Principi. Photo by Mariela Appollonio, Miro Zagnoli.



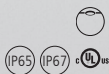
EGO DRIVE-OVER

Ernesto Gismondi
2012




stainless
steel

sizes: 55, 90, 150
models: round, square





IPPOLITO

Alessandro Pedretti
(Studio Rota & Partners)
2011



white RAL9002 /
anthracite grey

sizes: 45, 90





red dot design award 2015
winner

LOGICO GARDEN

Michele De Lucchi & Daniele Moioli

2015



anthracite
grey

sizes: 45, 60, 90



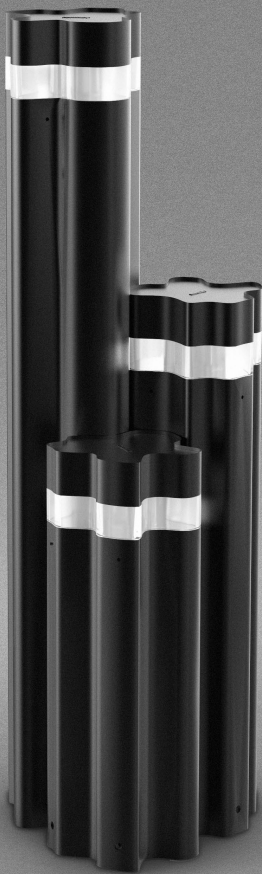


red dot design award 2015
winner

LOGICO TRIPLE GARDEN

Michele De Lucchi & Daniele Moioli

2015



anthracite
grey





MINISPOT

Artemide
2014



silver
grey



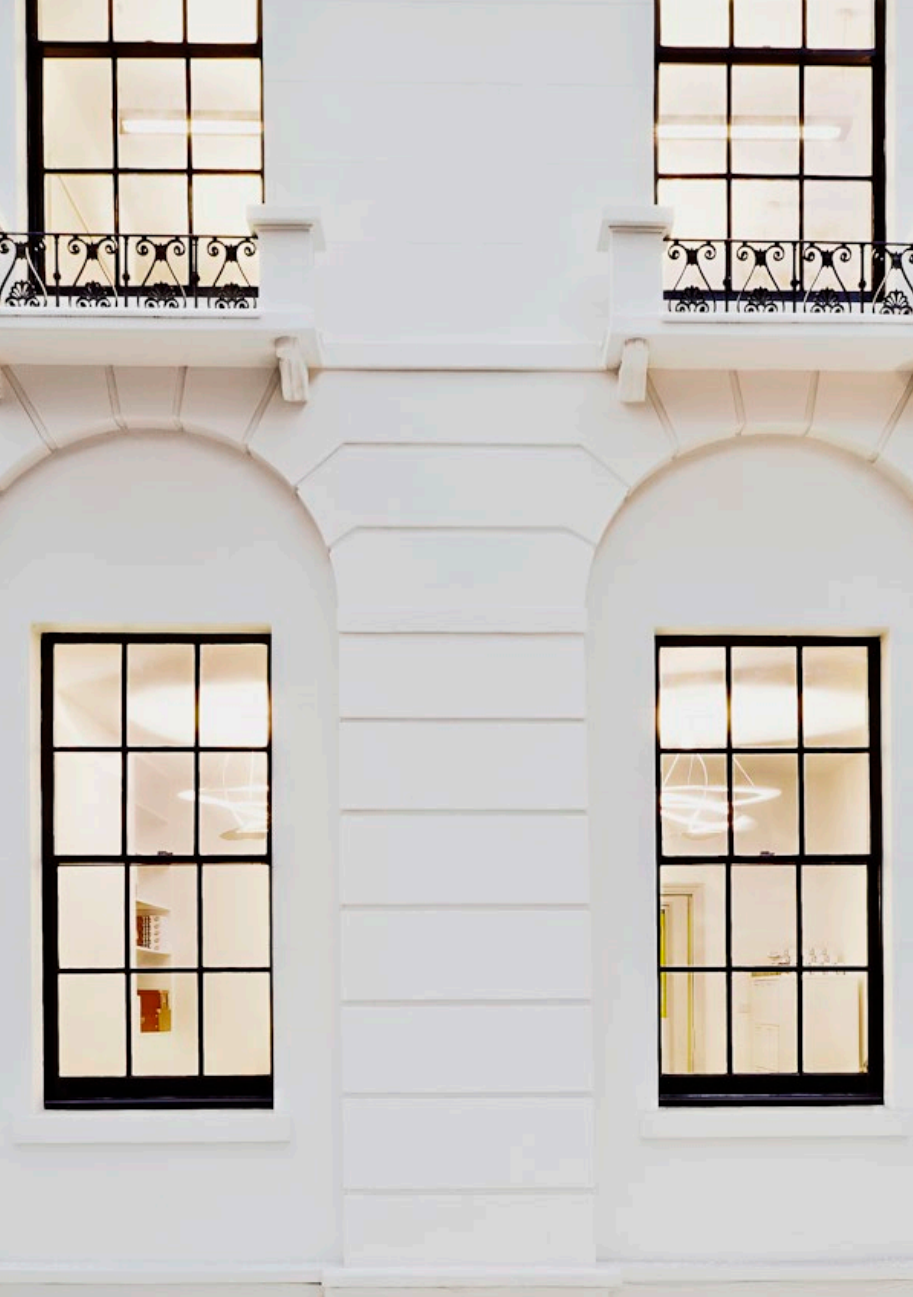
IP65 cULus



MOLLA

Ernesto Gismondi
2011







156



Italian School, London, England. Project by Giovanni Premi. Photo by Annalisa Bruno.



NIKI

Ernesto Gismondi
2012



polished
aluminum



satin



prismatic
glass

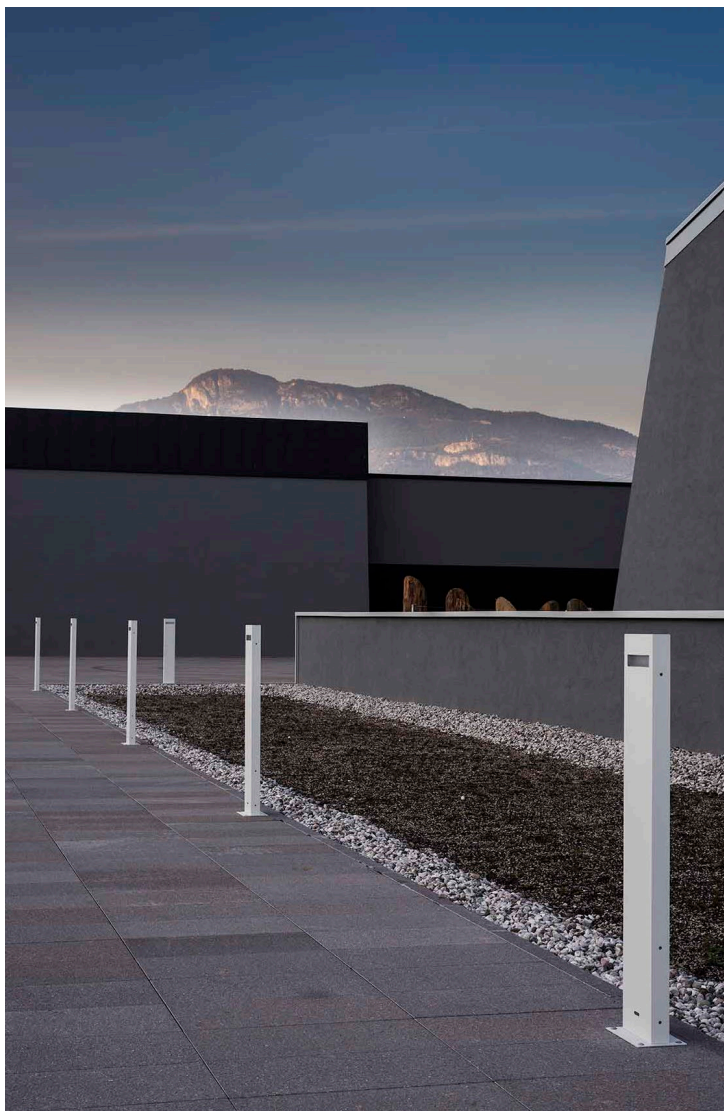


white prismatic
glass









NUDA

Ernesto Gismondi
2010



white
RAL9002

sizes: 50, 100
models: unilateral, bilateral (100 only)



Zurich North America Headquarters, Chicago, IL, USA. Photo by Leslie Schwartz.





1000 ZÜRICH WAY



O GROUND

Elemental
2018

NEW



black





“OUR PROJECT FOR ARTEMIDE IS AN ATTEMPT TO RECONCILE THE NEEDS OF THE NATURAL AND THE URBAN ENVIRONMENT. OUR STRATEGY IS TWOFOLD: ON ONE HAND, IT IS TO DESIGN A LIGHT FOR THE PUBLIC SPACE THAT WHEN NOT IN USE CAN BE AS IMPERCEPTIBLE AS POSSIBLE; LIGHT WITHOUT A LAMP. ON THE OTHER HAND, IT IS TO TAKE ADVANTAGE OF DIFFERENT TYPES OF SENSORS SO THAT LIGHT APPEARS JUST WHEN NEEDED; LIGHT ON DEMAND.”

ELEMENTAL





Photo by Pierpaolo Ferrari.



O SUSPENSION

Elemental
2018

NEW



black





WE

WORKSHOP ELEMENTAL
ALEJANDRO ARAVENA
GONZALO ARTEAGA
JUAN CERDA
VICTOR ODDÓ
DIEGO TORRES

"O"

ELEMENTAL





OBICE

Alessandro Pedretti
(Studio Rota & Partners)
2017



black



white

size: mini, standard





OBLIQUE GROUND

Arik Levy
2014



anthracite
grey



white

sizes: 45, 75

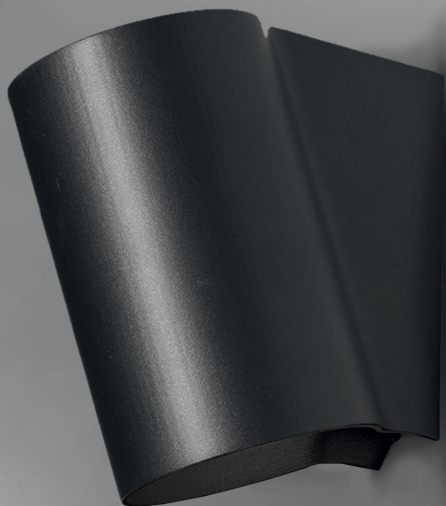
models: groundspike or standard





OBLIQUE WALL

Arik Levy
2014



anthracite
grey



white





PANTAREI

Ernesto Gismondi
2015



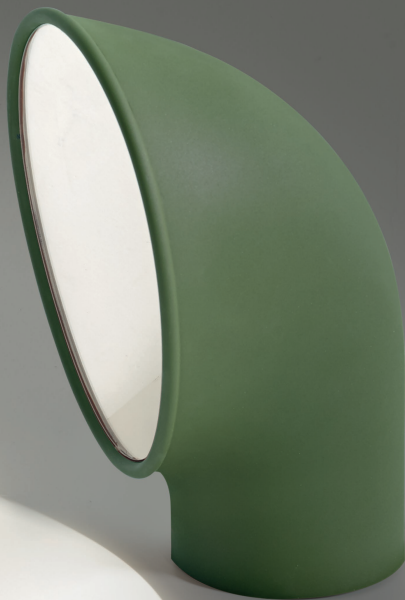
sizes: 190, 300





PIROSCAFO

Ernesto Gismondi
2014



green



grey









REEDS

Klauss Begasse
2013



B



anthracite
grey

RODS



transparent

models: single, triple





ORIGINALLY DESIGNED BY KLAUS
BEGASSE IN THE '60S, REEDS HAS
BEEN UPDATED TO INCORPORATE
THE LATEST LED TECHNOLOGY. A
WONDROUS INTERPRETATION OF
A UNIQUE FAIRY TALE FOREST, ITS
LIGHT ARCHITECTURE CREATES A
SPECTACLE OF SOFT AND BRIGHT
LIGHT WITH ITS DECORATIVE
AMBIENT APPEAL WHETHER IT IS
MADE PART OF AN INTERIOR OR
OUTDOOR ENVIRONMENT.

Private Garden, Zeeland, Netherlands. Project by Lichtstudio Dagvri. Photo by Dagvri in Elburg.







TETRAGONO GROUND

Ernesto Gismondi
2013



sizes: 45, 90

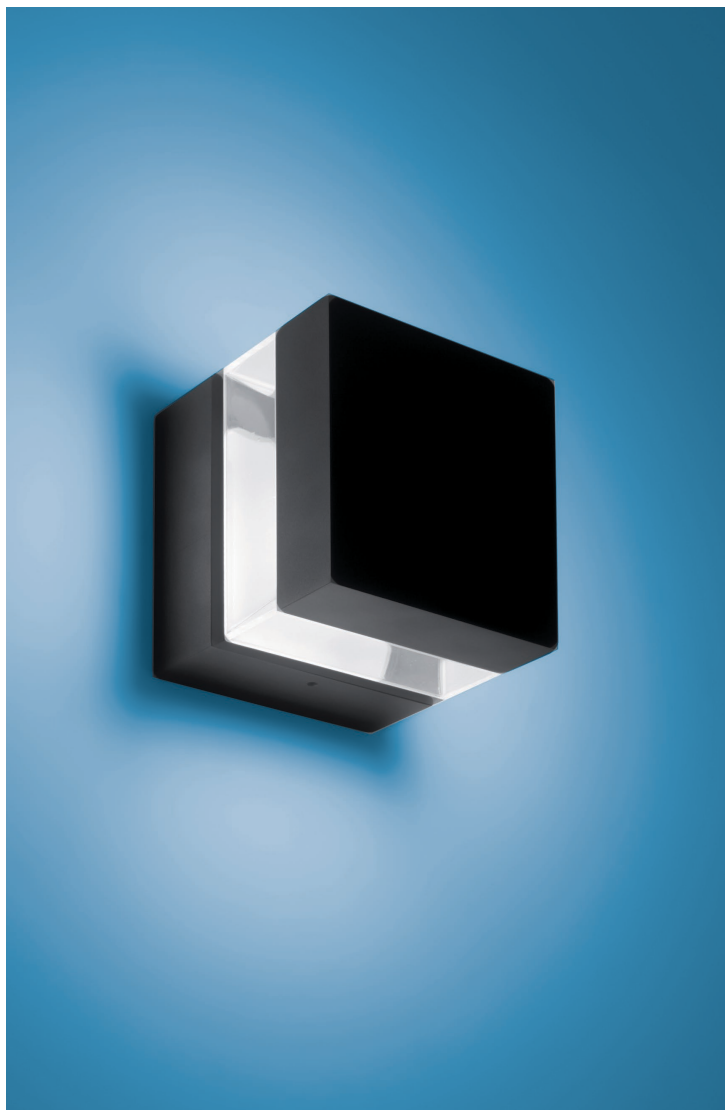


anthracite
grey





Le Pilori Restaurant, Ecaussinnes, Belgium. Photo by Emmanuel Bosteels.



TETRAGONO WALL

Ernesto Gismondi
2013





TOLOMEO MEGA OUTDOOR GROUND

Michele de Lucchi & Giancarlo Fassina
2015



D



basalt

D



white

B



aluminum



IP65





TOLOMEO MEGA OUTDOOR HOOK

Michele de Lucchi & Giancarlo Fassina
2015



D



basalt

D



white

HOOK



aluminum

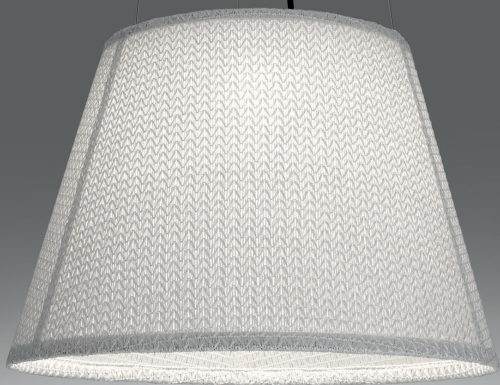




TOLOMEO MEGA OUTDOOR SUSPENSION

Michele de Lucchi & Giancarlo Fassina

2015



basalt



white



aluminum







Soho Rooftop, New York, NY, USA. Photo by Leslie Schwartz.



TOLOMEO OUTDOOR LANTERN GROUND

Michele de Lucchi & Giancarlo Fassina
2015



B



aluminum

D



clear



(IP65)





TOLOMEO OUTDOOR LANTERN HOOK

Michele de Lucchi & Giancarlo Fassina

2015



B



aluminum

D



clear





TOLOMEO OUTDOOR LANTERN

Michele de Lucchi & Giancarlo Fassina

2015



B



aluminum

D



clear





TOLOMEO XXL

Michele de Lucchi & Giancarlo Fassina
2009



aluminum /
grey





SUITABLE FOR
BOTH INDOOR AND
OUTDOOR USE, THE
TOLOMEO XXL IS
CREATED IN A 4:1
SCALE OF THE CLASSIC
TABLE MODEL AND
INCLUDES ALL OF THE
SIGNATURE FEATURES
OF THE ORIGINAL.





TECHNICAL AND COMPANY INFORMATION

- 128 How to Read the Catalog
- 129 Terminology
- 131 IP Rating
- 132 Index
- 134 Artemide America

HOW TO READ THE CATALOG

TOLOMEO MEGA OUTDOOR GROUND

Michele de Lucchi & Giancarlo Piretti
2015



basalt



white



aluminum

colors

D: diffuser, head

B: body, base, structure, stem, support, arm



(IP65)

UL US

Typology Icons


ground, recessed ground, wall, ceiling,
wall/ceiling, suspension, recessed ceiling

TERMINOLOGY

CLASSIFICATIONS

 **c.UL.us listed** = Underwriters Laboratories, US and Canadian certified.


PRODUCT FAMILY INDEX


 = ground


 = recessed ground

 = recessed ceiling

 = wall

 = ceiling

 = wall/ceiling

 = suspension



IP RATING

Electrical fittings are manufactured to prevent the intrusion and contact with solids and liquids. Resistance against the ingress of solids and liquids is expressed by the initials IP, followed by two digits that stand for the degree of protection : the first referring to solids, the second to liquids. (example: IP20)

FIRST DIGIT

- 0. Non-protected.
- 1. Protected against the penetration of solid objects greater than 2" (5 cm)
- 2. Protected against the penetration of solid objects greater than 1/2" (1,2 cm)
- 3. Protected against the penetration of solid objects greater than 1/8" (0,25 cm)
- 4. Protected against the penetration of solid objects greater than 1/16" (0,1 cm)
- 5. Dust-protected
- 6. Dust-tight

SECOND DIGIT

- 0. Non-protected.
- 1. Protected against dripping water.
Water equivalent to 1 mm rainfall per minute (10 minutes)
- 2. Protected against dripping water when tilted up to 15° from normal position
Water equivalent to 3 mm rainfall per minute (10 minutes)
- 3. Protected against spraying water at any angle up to 60° from vertical
Water volume : 0,7 liters per minute
Pressure : 80–100 kN/m² (5 minutes)
- 4. Protected against splashing water
Water volume : 10 liters per minute
Pressure : 80 - 100 kN/m² (10 minutes)
- 5. Protected against water jets
Water volume : 12.5 liters per minute
Pressure : 30 kN/m² at distance of 3m (at least 3 minutes)
- 6. Protected against powerful water jets
Water volume : 100 liters per minute -
Pressure : 100 kN/m² at distance of 3m (at least 3 minutes)
- 7. Protected against the effects of immersion
Immersion at depth of 1m (30 minutes)
- 8. Protected against submersion
Depth specified by manufacturer (continuous immersion in water)

INDEX

ARIA	
recessed wall.....	16
CALUMET	
ceiling.....	18
wall.....	20
CEFISO	
wall/ceiling/ground.....	22
CHILONE	
ground/pole.....	26
wall.....	32
CICLOPE	
ground.....	34
wall.....	36
CUNEO	
wall/ground.....	38
DIOSCURI	
wall/ceiling.....	40
EFFETO ROUND	
wall.....	44
EFFETO SQUARE	
wall.....	46
EGO DOWNLIGHT	
recessed ceiling.....	48
EGO DRIVE-OVER	
recessed ground.....	50
IPPOLITO	
ground.....	52
LOGICO GARDEN	
ground.....	54
LOGICO TRIPLE GARDEN	
ground.....	56
MINISPOT	
wall/ground.....	58

MOLLA	
wall	60
NIKI	
wall/ceiling	64
NUDA	
ground	68
O	
ground	72
suspension	78
OBICE	
wall	82
OBLIQUE	
ground	84
wall	86
PANTAREI	
wall/ceiling	88
PIROSCAFO	
ground	90
REEDS	
ground	94
TETRAGONO	
ground	100
wall	104
TOLOMEO MEGA OUTDOOR	
ground	106
hook	108
suspension	110
TOLOMEO OUTDOOR LANTERN	
ground	114
hook	116
suspension	118
TOLOMEO XXL	
ground	120

UNITED STATES HEADQUARTERS

Artemide, Inc. • 250 Karin Lane, Hicksville, NY 11801

T. 631-694-9292 • Toll Free 1-877-Art-9111 • email: infousa@artemide.net

artemide.net

FLAGSHIP STORES

CHICAGO

351 W Hubbard Street, 103
Chicago, IL 60654
T. 312-475-0100
chicago@artemide.net

LOS ANGELES

9006 Beverly Boulevard
West Hollywood, CA 90048
T. 310-888-4099
losangeles@artemide.net

NEW YORK

46 Greene Street
New York, NY 10013
T. 212-925-1588
newyork@artemide.net

ARTEMIDE SALES OFFICES

CHICAGO

T. 312-475-0100
chicago@artemide.net

LOS ANGELES

T. 310-888-4099
losangeles@artemide.net

MIAMI

T. 305-444-5800
miami@artemide.net

NEW YORK

T. 212-925-1588
newyork@artemide.net

SAN FRANCISCO

T. 415-393-9955
sanfrancisco@artemide.net

CANADA HEAD OFFICE / BUREAU CHEF

Artemide Canada Ltée/Ltd. • 11105, rue Renaude Lapointe, Montréal, Québec H1J 2T4

T. 514-323-6537 • Toll Free 1-888-777-2783 • email: infocanada@artemide.net

artemide.net

ARTEMIDE FLAGSHIP STORE / SALLE DE MONTRE ARTEMIDE

TORONTO

5 Mill Street

Toronto, Ontario M5A 3R6

T. 416-628-6718

toronto@artemide.net

ARTEMIDE SALES OFFICE / BUREAU DE VENTES ARTEMIDE

MONTREAL

T. 514-323-6537

montreal@artemide.net

TORONTO

T. 416-628-6718

toronto@artemide.net

MEXICO

Scultura Luminosa, Sudermann #246, Col. Chapultepec Morales, Mexico D.F., 11570

T. +52-55-5250-2661 / +52-55-4633-2744 • email: info@artemide.mx

artemide.net

MEXICO CITY

Scultura Luminosa

Suderman #246, Col. Chapultepec Morales

Mexico D.F. 11570

T. +52-55-5250-2661

F. +52-55-4633-2744

info@artemide.mx

LATIN AMERICA

For informations regarding distributors and points of sale, please email infolatam@artemide.net
For Latin American countries that require 220V products, please visit our international website at
www.artemide.com



artemide.net