

Roll & Hill
LIGHTING









Table of Contents

P. 12	Lindsey Adelman
P. 26	McKenzie & Keim
P. 36	Karl Zahn
P. 44	Jason Miller
P. 54	Jonah Takagi
P. 64	Jason Miller
P. 74	John Hogan
P. 82	Karl Zahn
P. 90	Fort Standard
P. 98	Philippe Malouin
P. 104	Jason Miller
P. 114	Visibility
P. 122	Rich Brilliant Willing
P. 130	Jason Miller
P. 140	Jason Miller
P. 146	Philippe Malouin
P. 154	Takagi & Homstvedt
P. 162	Paul Loebach
P. 174	Ladies & Gentlemen Studio

2021 Collection

P. 180	Lindsey Adelman
P. 190	Ladies & Gentlemen and Vera & Kyte
P. 196	Bec Brittain
P. 204	Jason Miller
P. 212	Jason Miller
P. 226	Lara Bohinc
P. 234	McKenzie & Keim
P. 242	Jason Miller
P. 250	Philippe Malouin
P. 260	Lukas Peet
P. 268	Ladies & Gentlemen Studio
P. 280	Rosie Li
P. 286	Jason Miller
P. 294	
P. 296	
P. 298	

Agnes — Astral Agnes

by Lindsey Adelman

Originally conceived as a candelabra, Agnes takes its inspiration from the fictional heroine of the same name, a worker in the world's oldest profession during the 1849 California Gold Rush. The modular system would allow Agnes easy setup in her makeshift "workspace." In this version, glowing glass tubes replace the candles. Articulated joints allow the glass to be arranged in a multitude of ways.



LIGHTING & MATERIALS

Chandelier — 20 Lights

Brushed Brass / Straight-Cut Glass

APPROX. MEASUREMENTS

L 59.5 in x W 50 in x H 33.5 in

L 151 cm x W 127 cm x H 85 cm

Finishes

- Black
- Bronze
- Brushed Brass
- Polished Nickel

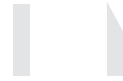
Canopy



A

A. 5-inch / 12.7-cm round in matching metal finish

Glass Style



A

A. Straight-cut
B. Angle-cut

Lamping



A. 120V

B. 240V

A. 3-Watt LED, Clear, JCD Shape, G9 Base
B. 3-Watt LED, Clear, JCD Shape, G9 Base

Features

Agnes glass cups and tips rotate.
Astral glass is fixed.

Details

Materials

Machined Aluminum,
Glass

Suspension

1/2-inch / 1.3-cm aluminum stem in matching metal finish.
35-inch / 89-cm length included with lamp.
96-inch / 244-cm length available for additional cost.
Stem length can be adjusted on site.

Dimmer Compatibility

Triac or Electronic Low Voltage (ELV)

Year

2010

Designer

Lindsey Adelman lives and works in her hometown of New York City. She has specialized in lighting design since 1996. Founded in 2006, her studio has grown into a group of 40 with a recent location opening in Los Angeles.

The lighting collections are driven by developing industrial modular systems to capture the ephemeral, fleeting beauty of nature. Adelman first discovered Industrial Design when meeting a woman carving foam French Fries for an exhibition at her editorial job at the Smithsonian and went straight to study ID at the Rhode Island School of Design. She continues to be challenged and seduced by the immaterial substance of light and is obsessed with creating forms that maximize light's sensual effect and highlight emptiness.

Adelman's work has been exhibited at the Cooper-Hewitt National Design Museum, Design Miami, Nilufar Gallery, and BDDW, among others. For many years, the studio has embraced a philanthropic mission supporting the Robin Hood Foundation to fight poverty in New York City. Adelman credits much of the studio's current success to this desire to make an impact.

Adelman lives with her designer husband Ian and their son Finn in Brooklyn.





LIGHTING & MATERIALS
Chandelier – 01 - 12 Lights
Brushed Brass / Straight-Cut Glass

APPROX. MEASUREMENTS
L 26 in x W 26 in x H 12 in
L 65 cm x W 65 cm x H 30 cm



LIGHTING & MATERIALS
Chandelier – 14 Lights
Polished Nickel / Angle-Cut Glass

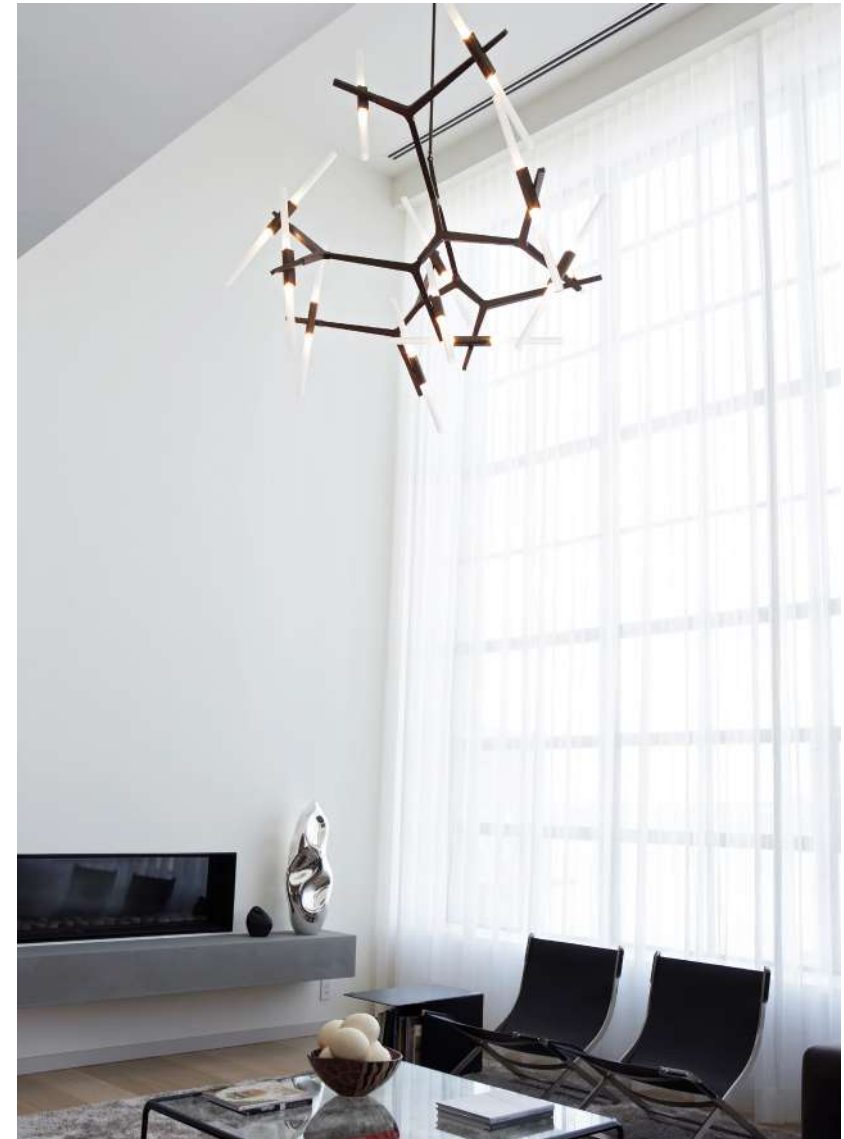
APPROX. MEASUREMENTS
L 72.5 in x W 34 in x H 21 in
L 184 cm x W 86 cm x H 53 cm



Private Residence — New York

LIGHTING & MATERIALS
 Chandelier — 10 Lights
 Polished Nickel / Straight-Cut Glass

APPROX. MEASUREMENTS
 L 38 in x W 32 in x H 25 in
 L 96 cm x W 82 cm x H 64 cm



Private Residence — New York

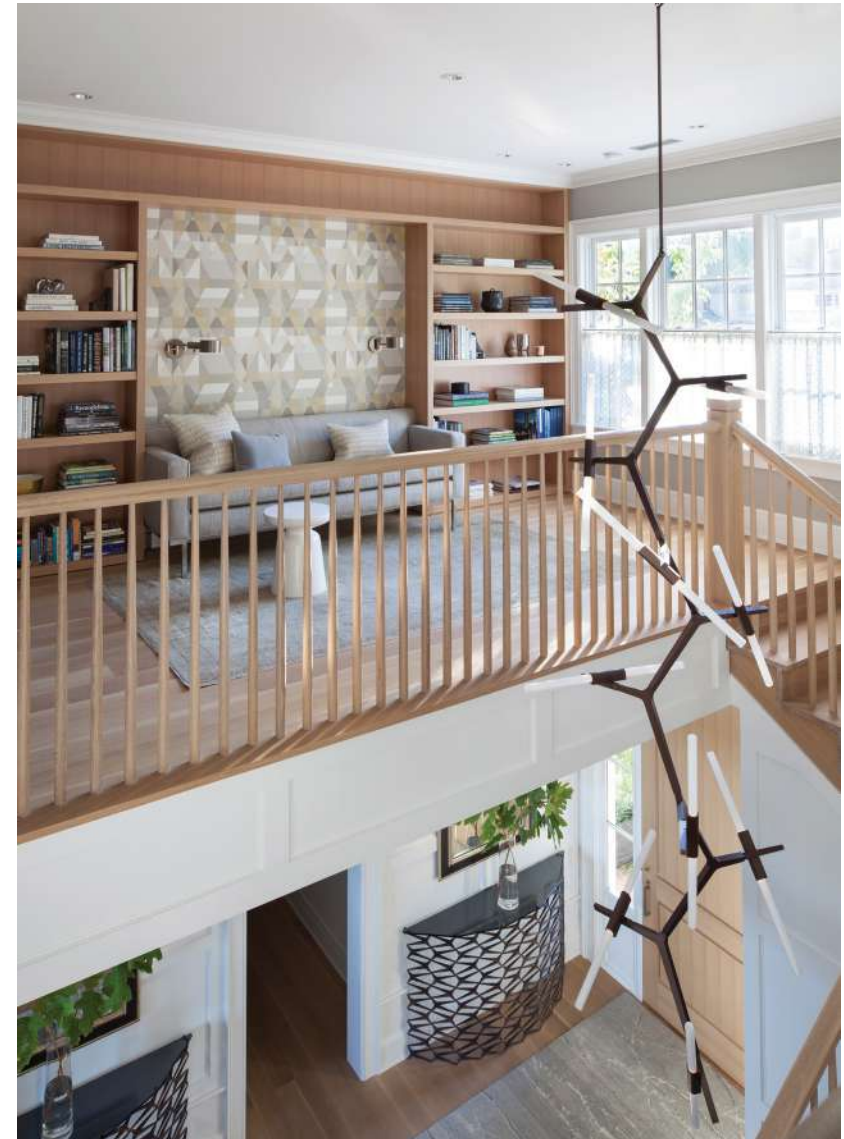
LIGHTING & MATERIALS
 Chandelier — 22 Lights
 Bronze / Straight-Cut Glass

APPROX. MEASUREMENTS
 Custom Configuration



LIGHTING & MATERIALS
 Cascade — 20 Lights
 Polished Nickel / Straight-Cut Glass

APPROX. MEASUREMENTS
 Detail



Private Residence — Seattle

LIGHTING & MATERIALS
 Cascade — 20 Lights
 Bronze / Straight-Cut Glass

APPROX. MEASUREMENTS
 L 29 in x W 26 in x H 102 in
 L 74 cm x W 65 cm x H 259 cm



LIGHTING & MATERIALS
Chandelier — 03 - 24 Lights
Polished Nickel / Straight-Cut Glass

APPROX. MEASUREMENTS
L 59 in x W 59 in x H 17 in
L 149 cm x W 149 cm x H 43 cm



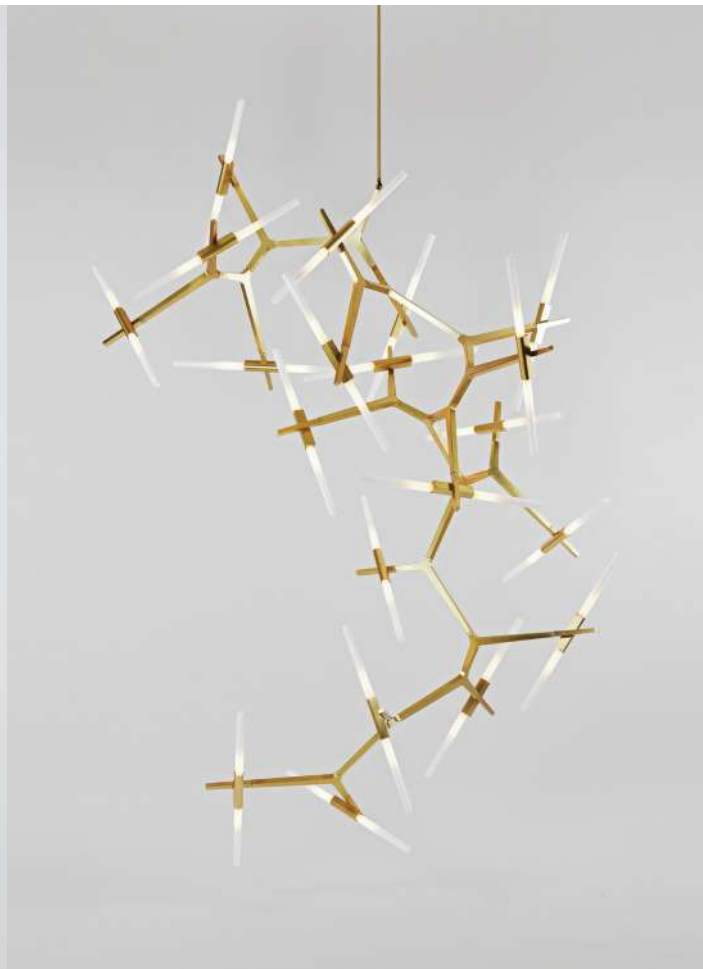
LIGHTING & MATERIALS
Chandelier — 14 Lights
Black / Straight-Cut Glass

APPROX. MEASUREMENTS
Detail



LIGHTING & MATERIALS
Sconce — 2 Lights
Bronze / Angle-Cut Glass

APPROX. MEASUREMENTS
H 26.5 in x W 10 in x D 3.5 in
H 67 cm x W 26 cm x D 9 cm



LIGHTING & MATERIALS
Swarm — 40 Lights
Brushed Brass / Straight-Cut Glass

APPROX. MEASUREMENTS
Custom Configuration



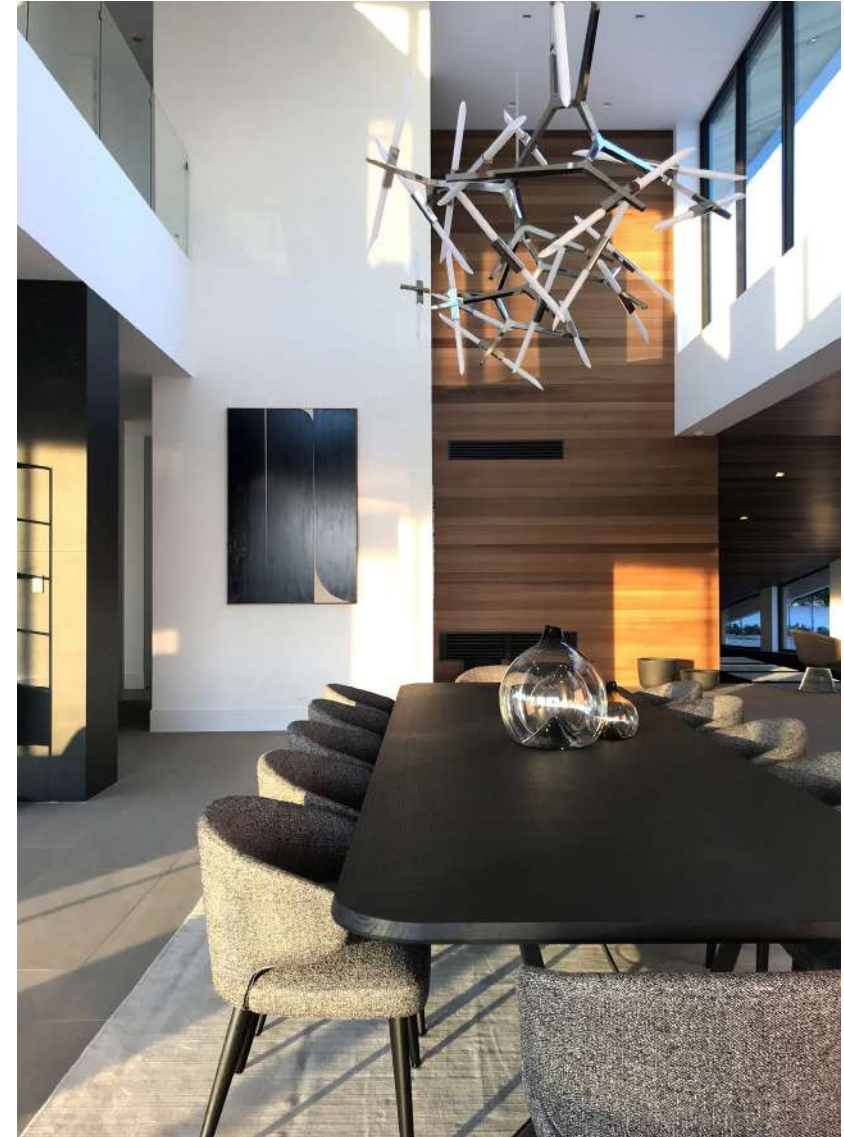
Private Residence – Mill Valley

LIGHTING & MATERIALS

Pendant – 2 Lights
Black / Straight-Cut Glass

APPROX. MEASUREMENTS

L 24.5 in x W 3.5 in x H 15 in
L 63 cm x W 8 cm x H 37 cm



Private Residence – Boca Raton

LIGHTING & MATERIALS

Chandelier – 40 Lights
Polished Nickel / Angle-Cut Glass

APPROX. MEASUREMENTS

Custom Configuration

Apollo

by McKenzie & Keim

This award-winning design is all about the details. Brass and hand-blown glass seamlessly blend into the matte-finish armature. The Apollo collection features a balanced, double-stemmed luminary, housing LEDs in opal glass shades to cast a brilliant yet soft light.



LIGHTING & MATERIALS

Chandelier — 6 Lights

Matte Black / Brushed Brass

APPROX. MEASUREMENTS

L 53 in x W 6 in x H 6 in

L 135 cm x W 15 cm x H 15 cm

Finishes — Armature

- Matte Black
- Matte Ivory

Finishes — Fittings

- Brushed Brass

Canopy



- A. 14-inch x 5-inch / 35.5-cm x 12.7-cm pill-shaped canopy in Oxidized Oak.
- B. 14-inch x 5-inch / 35.5-cm x 12.7-cm pill-shaped canopy in Whitewashed Oak.

Lamping 120V & 240V

Integrated LED

Details

Materials

Brass, Aluminum, Glass, White Oak

Suspension

1/2-inch brass stems (2) in matching metal finish. 35-inch length included with lamp. 96-inch length available for additional cost. Length can be adjusted on site.

Dimmer Compatibility

120V: Triac, Electronic Low Voltage (ELV) or 0-10V
240V: Electronic Low Voltage (ELV) or 0-10V

Year

2019

Designer

Taylor McKenzie-Veal and Brendan Keim started their eponymous studio to bring their designs to life and into people's homes. After years of pursuing their own careers, they joined forces, fusing their knowledge of materials, production, technology and design into one studio. McKenzie & Keim was born in 2016, and operates today from their location in the Logan Square neighborhood of Chicago, Illinois.





LIGHTING & MATERIALS
Pendant — Stem
Brushed Brass

APPROX. MEASUREMENTS
Ø8 in x H 6 in
Ø20 cm x H 16 cm



LIGHTING & MATERIALS
Chandelier — 12 Lights
Matte Black / Brushed Brass

APPROX. MEASUREMENTS
L 57 in x W 57 in x H 19 in
145 cm x 145 cm x 47 cm



LIGHTING & MATERIALS
Sconce
Oxidized Oak / Brushed Brass

APPROX. MEASUREMENTS
Ø2.8in x D 3.7 in
Ø7 cm x D 9.5 cm



LIGHTING & MATERIALS
Chandelier — 4 Lights
Matte Ivory / Brushed Brass

APPROX. MEASUREMENTS
L 53 in x W 6 in x H 3 in
L 135 cm x W 15 cm x H 8 cm



Roll & Hill — New York

LIGHTING & MATERIALS
 Custom Configuration
 Matte Black / Brushed Brass

APPROX. MEASUREMENTS
 Custom Configuration



LIGHTING & MATERIALS
 Chandelier — 6 Lights
 Matte Black / Brushed Brass

APPROX. MEASUREMENTS
 Detail



Roll & Hill — New York

LIGHTING & MATERIALS
 Chandelier — 12 Lights
 Matte Black / Brushed Brass

APPROX. MEASUREMENTS
 L 57 in x W 57 in x H 19 in
 L 145 cm x H 145 cm x H 47 cm



LIGHTING & MATERIALS
 Chandelier — 5 Lights
 Matte Black / Brushed Brass

APPROX. MEASUREMENTS
 L 53 in x W 6 in x H 4.5 in
 L 135 cm x W 15 cm x H 11 cm

Arbor

by Karl Zahn

Arbor explores linear forms interpreted in 3 dimensional space. Featured in an ebonized oak veneer, these pendants appear full and overshadowing at first, but quickly reveal themselves as warm and weightless contours in space.



LIGHTING & MATERIALS

Pendant — 02

Blackened Steel / Ebonized Oak

APPROX. MEASUREMENTS

L 46.7 in x W 17.1 in x H 18 in

L 119 cm x L 44 cm x H 46 cm

Finishes

● Blackened Steel / Ebonized Oak

Canopy



A

A. 12.3-inch x 5.2-inch / 31.2-cm x 13.2-cm
pill-shaped canopy in matching
metal finish

Lamping 120V & 240V

Integrated LED

Details

Materials

Aluminum, Stainless Steel,
Oak Veneer

Suspension

96-inch / 244-cm aircraft cable.
Length can be adjusted on site.

Dimmer Compatibility

Triac, Electronic Low Voltage (ELV) or
0-10V

Year

2019

Designer

Born and raised in rural Vermont, Karl Zahn's work with wood and natural materials developed out of his time spent playing in forests and wood shops. His designs express a pared down simplicity and stark aesthetic that blends modernist hard lines with traditional furniture craft. After earning a degree in product design from the Rhode Island School of Design in 2003, Karl traveled to San Francisco, where he immersed himself in the creative and complicated metalworking culture that thrives there. In 2007, he moved to New York to begin working on his own. He lives in Greenpoint, Brooklyn.





Roll & Hill — New York

LIGHTING & MATERIALS
 Pendant — 02
 Blackened Steel / Ebonized Oak

APPROX. MEASUREMENTS
 L 46.7 in x W 17.1 in x H 18 in
 L 119 cm x W 44 cm x H 46 cm



Roll & Hill — New York

LIGHTING & MATERIALS
 Pendant — 01, 02
 Blackened Steel / Ebonized Oak

APPROX. MEASUREMENTS
 Multiple Configurations



LIGHTING & MATERIALS
Pendant – 01
Blackened Steel / Ebonized Oak

APPROX. MEASUREMENTS
L 29 in x W 10.5 in x H 11 in
L 73 cm x W 27 cm x H 28 cm



LIGHTING & MATERIALS
Pendant – 02
Blackened Steel / Ebonized Oak

APPROX. MEASUREMENTS
L 47 in x W 17 in x H 18 in
L 119 cm x W 44 cm x H 46 cm

Bauer

by Jason Miller

Jason Miller's Bauer is a pendant fixture made of stacked, concentric clusters of handblown tubular glass. The glass fades from dark to light, recalling the tonalities of earth-to-sky views, producing an ethereal, atmospheric effect.



LIGHTING & MATERIALS

Chandelier 01

Bronze

APPROX. MEASUREMENTS

Dia. 15 in × H 28.5 in

Dia. 39 cm × H 72 cm

Finishes

- Black
- Brushed Brass

● Bronze

Glass Color

● White

Canopy



A

A. 5-inch / 12.7-cm round in matching metal finish

Lamping 120V & 240V

Integrated LED

Details

Materials

Machined Aluminum,
Glass

Suspension

1/2-inch / 1.3-cm aluminum stem in matching metal finish.
35-inch / 89-cm length included with lamp.
96-inch / 244-cm length available for additional cost.
Stem length can be adjusted on site.

Dimmer Compatibility

Triac, Electronic Low Voltage (ELV) or
0-10V

Year

2016

Designer

Jason Miller is a Brooklyn-based designer and the founder of Roll & Hill. Born in New York and raised in Darien, Connecticut, Jason's suburban upbringing heavily influenced his early, more conceptual pieces — duct-taped chairs and cracked vases, among them — and continues to inform the elegant, historically rich work that has become his signature. Jason received an MFA in painting and spent time in both the art and advertising worlds, but soon realized he preferred making things to documenting them. His designs — like a mirror whose photographic surface recalls a painted landscape — still often reflect those early preoccupations, but each is a functional object, with a kind of beauty and wit. Today, Jason runs both Jason Miller Studio and Roll & Hill from his headquarters in Sunset Park, Brooklyn.





LIGHTING & MATERIALS
Chandelier 01
Brushed Brass

APPROX. MEASUREMENTS
Dia. 15 in x H 28.5 in
Dia. 39 cm x H 72 cm



LIGHTING & MATERIALS
Chandelier 02
Custom Finish

APPROX. MEASUREMENTS
Detail



LIGHTING & MATERIALS
Chandelier 02
Bronze

APPROX. MEASUREMENTS
Dia. 15 in x H 34 in
Dia. 39 cm x H 86 cm



LIGHTING & MATERIALS
Chandelier 01
Brushed Brass

APPROX. MEASUREMENTS
Detail



LIGHTING & MATERIALS

Chandelier 01
Bronze

APPROX. MEASUREMENTS

Dia. 15 in x H 28.5 in
Dia. 39 cm x H 72 cm



Casa Perfect – Los Angeles

LIGHTING & MATERIALS

Chandelier 01
Black

APPROX. MEASUREMENTS

Dia. 15 in x H 28.5 in
Dia. 39 cm x H 72 cm



goop LAB — New York

LIGHTING & MATERIALS

Chandelier 02
Bronze

APPROX. MEASUREMENTS

Dia. 15 in x H 34 in
Dia. 39 cm x H 86 cm



Roll & Hill — New York

LIGHTING & MATERIALS

Custom Chandelier
Custom Finish

APPROX. MEASUREMENTS

Custom Configuration

Bluff City

by Jonah Takagi

Bluff City integrates a traditional pendant shade and a wire cage into an industrially-inflected, elegant fixture. Inspired in the town of Memphis, Tennessee, Bluff City's different materials and finish combinations give the lamp a vaguely postmodern feel that also echoes the Memphis design movement of the 1980s.



LIGHTING & MATERIALS

14-inch



White / Brass

APPROX. MEASUREMENTS

Dia. 14 in × H 13 in

Dia. 36 cm × H 32 cm

Finishes

-  Mint / Red
-  White / Black
-  White / Brass
-  Blue / Nickel

Canopy



A

A. 5-inch / 12.7-cm round in white

Lamping



A. 120V

8-inch

A. 6-Watt LED, Frosted, G40 Globe, E26 Base



B. 240V

B. 6-Watt LED, Frosted, G40 Globe, E27 Base



C. 120V

14-inch

C. 6-Watt LED, Frosted, A19 Shape, E26 Base



D. 240V

D. 6-Watt LED, Frosted, A19 Shape, E27 Base

Details

Materials

Powder-coated and Plated Steel

Suspension

144-inch / 366-cm cord.
Length can be adjusted on site.

Dimmer Compatibility

Triac or Electronic Low Voltage (ELV)

Year

2010

Designer

Born in Tokyo and raised in New England, Jonah received a Bachelor of Fine Arts from the Rhode Island School of Design in 2002. For several years, Jonah designed furniture and lighting that he built in a friend's studio while he played bass guitar, touring and recording with several indie rock bands. Needing to develop and showcase a growing body of work that was filling his house but few had seen, Jonah founded his own design studio in 2010.





Private Residence — New York

LIGHTING & MATERIALS

14-inch
White / Brass

APPROX. MEASUREMENTS

Dia. 14 in x H 13 in
Dia. 36 cm x H 32 cm



Orion Jet Center — Miami

LIGHTING & MATERIALS

8-inch
White / Black

APPROX. MEASUREMENTS

Dia. 8 in x H 10 in
Dia. 20 cm x H 25 cm



LIGHTING & MATERIALS

14-inch
White / Black

APPROX. MEASUREMENTS

Dia. 14 in x H 13 in
Dia. 36 cm x H 32 cm



LIGHTING & MATERIALS

14-inch
Mint / Red

APPROX. MEASUREMENTS

Dia. 14 in x H 13 in
Dia. 36 cm x H 32 cm



LIGHTING & MATERIALS

8-inch
White / Brass

APPROX. MEASUREMENTS

Dia. 8 in x H 10 in
Dia. 20 cm x H 25 cm



LIGHTING & MATERIALS

8-inch
Blue / Nickel

APPROX. MEASUREMENTS

Dia. 8 in x H 10 in
Dia. 20 cm x H 25 cm



Private Residence — New York

LIGHTING & MATERIALS

8-inch
White / Black

APPROX. MEASUREMENTS

Dia. 8in x H 10in
Dia. 20 cm x H 25cm



New Belgium Ranger Station — Snowmass Village

LIGHTING & MATERIALS

14-inch
Custom Finish

APPROX. MEASUREMENTS

Dia. 14 in x H 13 in
Dia. 36 cm x H 32 cm

Castle

by Jason Miller

While the shape of these pieces occasionally resemble the turrets of a castle, the name actually comes from the game of chess. The rook can jump any distance, yet it is restricted to moving orthogonally. Likewise, the glass in Castle extends to different lengths, but is always horizontal or vertical.

LIGHTING & MATERIALS

12 – 03

Black / Cream

APPROX. MEASUREMENTS

L 20 in x W 20 in x H 37.5 in

L 51 cm x W 51 cm x H 95 cm



Finishes

- Black
- Bronze
- Brushed Brass

Glass Colors

- Smoke
- Clear
- Cream

Canopy



A

A. 5-inch / 12.7-cm round in matching metal finish

Lamping 120V & 240V

Integrated LED

Details

Materials

Machined Aluminum,
Glass

Suspension

1/2-inch / 1.3-cm aluminum stem in matching metal finish.
35-inch / 89-cm length included with lamp.
96-inch / 244-cm length available for additional cost.
Stem length can be adjusted on site.

Dimmer Compatibility

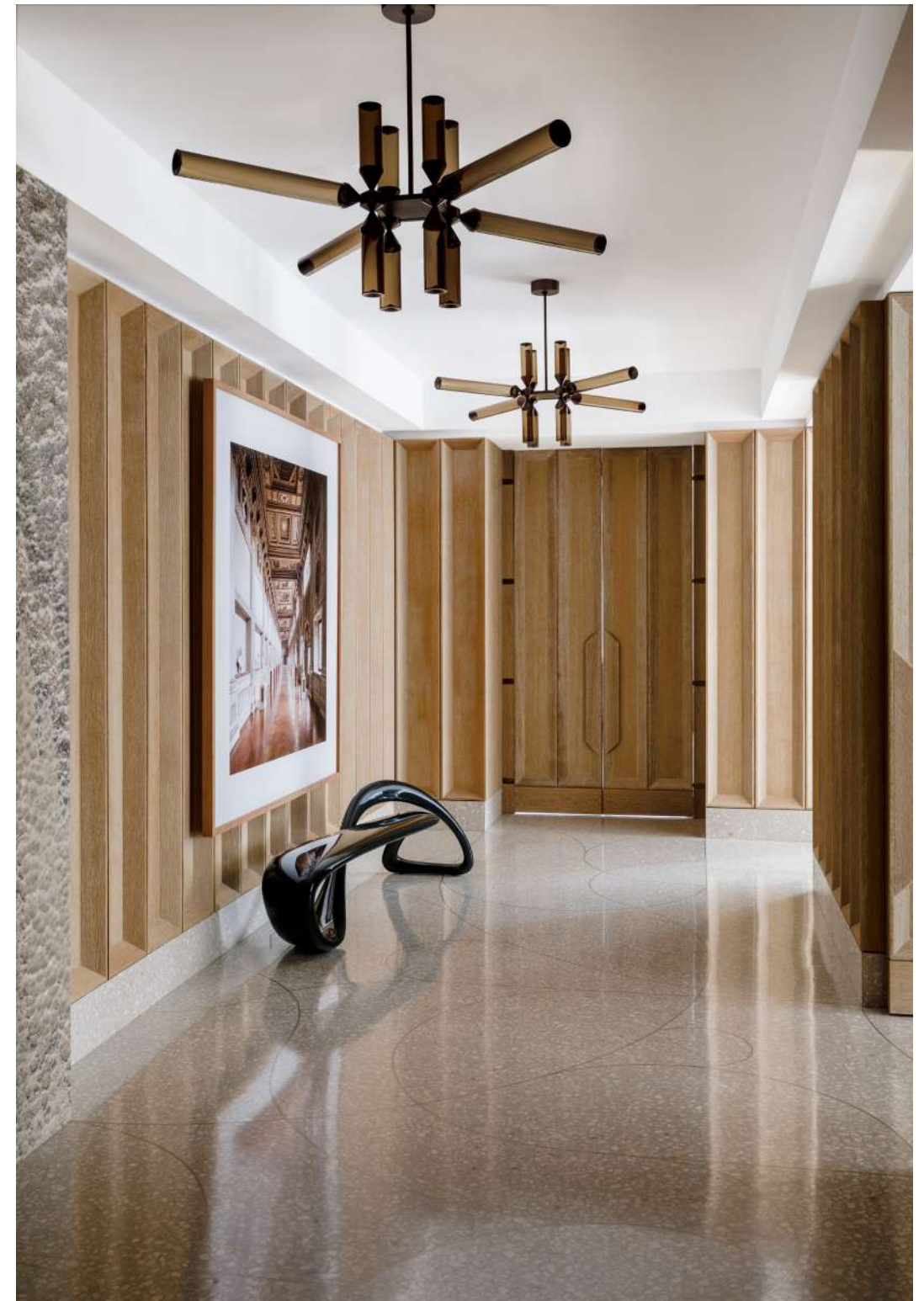
Triac, Electronic Low Voltage (ELV) or
0-10V

Year

2015

Designer

Jason Miller is a Brooklyn-based designer and the founder of Roll & Hill. Born in New York and raised in Darien, Connecticut, Jason's suburban upbringing heavily influenced his early, more conceptual pieces — duct-taped chairs and cracked vases, among them — and continues to inform the elegant, historically rich work that has become his signature. Jason received an MFA in painting and spent time in both the art and advertising worlds, but soon realized he preferred making things to documenting them. His designs — like a mirror whose photographic surface recalls a painted landscape — still often reflect those early preoccupations, but each is a functional object, with a kind of beauty and wit. Today, Jason runs both Jason Miller Studio and Roll & Hill from his headquarters in Sunset Park, Brooklyn.





LIGHTING & MATERIALS

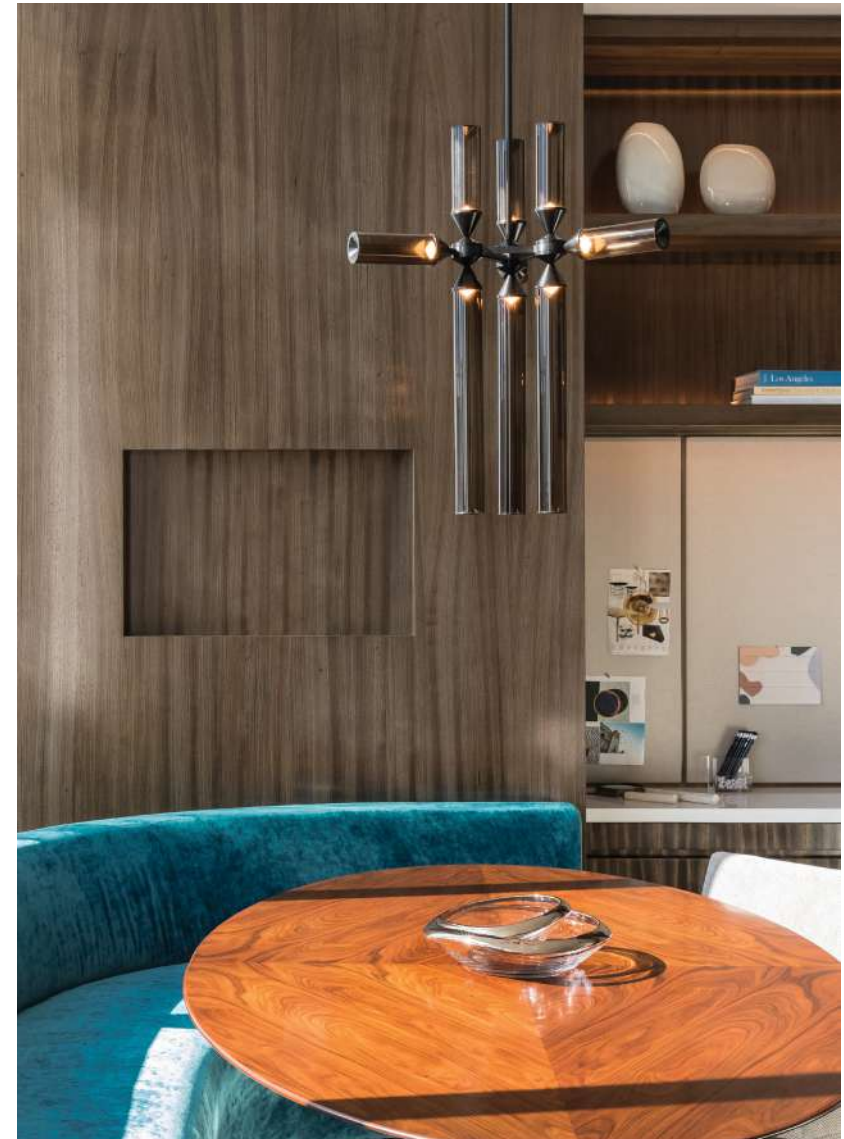
12-04

Black / Cream

APPROX. MEASUREMENTS

L 20 in x W 20 in x H 37.5 in

L 51 cm x W 51 cm x H 95 cm



Private Residence — New York

LIGHTING & MATERIALS

9-02

Black / Smoke

APPROX. MEASUREMENTS

L 22.5 in x W 19.5 in x H 27.5 in

L 57 cm x W 50 cm x H 70 cm



LIGHTING & MATERIALS

12-04

Custom Finish

APPROX. MEASUREMENTS

Detail



LIGHTING & MATERIALS

18-01

Black / Smoke

APPROX. MEASUREMENTS

L 44 in x W 50 in x H 17.5 in

L 112 cm x W 126 cm x H 44 cm



LIGHTING & MATERIALS

18-03

Brushed Brass / Clear

APPROX. MEASUREMENTS

L 30 in x W 27 in x H 37.5 in

L 76 cm x W 68 cm x H 95 cm



Private Residence – Dublin

LIGHTING & MATERIALS

12-04

Black / Cream

APPROX. MEASUREMENTS

L 20 in x W 20 in x H 37.5 in

L 51 cm x W 51 cm x H 95 cm

Coax

by John Hogan

Coax is a coalescence of metal, glass, and light. The materials hang serenely, appearing weightless against each other. Cylindrical echoes of transparent glass surround a tube of light suspended in air



LIGHTING & MATERIALS

Pendant — 03

Polished Brass

APPROX. MEASUREMENTS

L 50 in x W 7 in x H 30 in

L 127 cm x L 18 cm x H 76 cm

Finishes

● Polished Brass

● Polished Nickel

Canopy



A

A. 9.65-inch x 5-inch / 24.5-cm x 12.7-cm
rectangle canopy in matching
metal finish

Lamping 120V & 240V

Integrated LED

Details

Materials

Glass, Aluminum, Steel

Suspension

96-inch / 244-cm aircraft cable. Length can be adjusted
on site.

Dimmer Compatibility

Triac, Electronic Low Voltage (ELV) or
0-10V

Year

2018

Designer

John Hogan is a Seattle-based artist and designer working predominantly in glass. His work, which spans the functional and sculptural, seeks to interrupt and augment radiant energy through the refraction of light. Taking influence from traditional Eastern European casting and cutting, projects focus on reductive design.





LIGHTING & MATERIALS

Pendant – 02

Polished Nickel

APPROX. MEASUREMENTS

L 36 in x W 7 in x H 28 in

L 92 cm x W 18 cm x H 70 cm



LIGHTING & MATERIALS

Pendant – 02

Polished Nickel

APPROX. MEASUREMENTS

Detail



Roll & Hill — New York

LIGHTING & MATERIALS

Pendant — 02

Polished Nickel

APPROX. MEASUREMENTS

L 36 in x W 7 in x H 28 in

L 92 cm x W 18 cm x H 70 cm



LIGHTING & MATERIALS

Pendant — 03

Polished Brass

APPROX. MEASUREMENTS

L 50 in x W 7 in x H 30 in

L 127 cm x W 18 cm x H 76 cm

Cora

by Karl Zahn

Cora is another name for the goddess Persephone, kidnapped by Hades and taken to the underworld. Before releasing her, Hades tricked her into eating a pomegranate seed, the food of the dead, which forced her to return every year. The lustrous finish and warm illumination in Karl Zahn's series evoke Cora's annual return, which brought earthly light and warmth to the underworld.



LIGHTING & MATERIALS

Pendant — 8 Lights

Polished Nickel

APPROX. MEASUREMENTS

L 16 in x W 8 in x H 25 in

L 41 cm x W 20 cm x H 64 cm

Finishes

- Black
- Polished Brass
- Bronze
- Polished Nickel

Canopy



A. 4 Units B. 8 Units

A. 10 x 5-inch / 25.4-cm x 12.7-cm rectangle in matching metal finish
B. 18 x 5-inch / 45.7-cm x 12.7-cm rectangle in matching metal finish

Details

Materials

Aluminum, Acrylic

Suspension

96-inch / 244-cm cord.
Length can be adjusted on site.

Dimmer Compatibility

120V: Triac, Electronic Low Voltage (ELV) or 0-10V
240V: Electronic Low Voltage (ELV) or 0-10V

Year

2015

Designer

Born and raised in rural Vermont, Karl Zahn's work with wood and natural materials developed out of his time spent playing in forests and wood shops. His designs express a pared down simplicity and stark aesthetic that blends modernist hard lines with traditional furniture craft. After earning a degree in product design from the Rhode Island School of Design in 2003, Karl traveled to San Francisco, where he immersed himself in the creative and complicated metalworking culture that thrives there. In 2007, he moved to New York to begin working on his own. He lives in Greenpoint, Brooklyn.

Features

Sconce shade rotates to create directional light.

Lamping 120V & 240V

Integrated LED





LIGHTING & MATERIALS

Pendant — 8 Lights

Bronze

APPROX. MEASUREMENTS

L 16 in x W 8 in x H 25 in

L 41 cm x W 20 cm x H 64 cm



LIGHTING & MATERIALS

Pendant — 4 Lights

Polished Brass

APPROX. MEASUREMENTS

L 8 in x W 8 in x H 25 in

L 20 cm x W 20 cm x H 64 cm



LIGHTING & MATERIALS

Pendant — 4 Lights
Polished Nickel

APPROX. MEASUREMENTS

L 8 in x W 8 in x H 25 in
L 20 cm x W 20 cm x H 64 cm



LIGHTING & MATERIALS

Sconce
Bronze

APPROX. MEASUREMENTS

H 9.5 in x W 5 in x D 5 in
H 24 cm x W 13 cm x D 13 cm

Counterweight

by Fort Standard

Counterweight is a series of LED fixtures made of gently arching, steam-bent wood that uses marble and brass as ballasts. Whether acting to counterbalance the lamp of the pendant light, or fixed as the base of the sconce, the mass of the stone and metal acts as a foil to the otherwise lightweight frames.



LIGHTING & MATERIALS

Pendant

Ash

APPROX. MEASUREMENTS

Dia. 64 in x W 2.5 in x H 12 in

Dia. 163 cm x W 6 cm x H 30 cm

Finishes

● Ash (Wood)

● Walnut (Wood)

● Carrara Marble (Stone)

● Brass (Metal)

Canopy



A. 10 x 4-inch / 25.4-cm x 10.2-cm rectangle in matching metal finish

Details

Materials

Brass, Glass,
Marble, Wood

Suspension

Fixed Pendant cord and aircraft cable.
Length can be adjusted on site.

Dimmer Compatibility

120V: Triac, Electronic Low Voltage (ELV) or 0-10V
240V: Electronic Low Voltage (ELV) or 0-10V

Year

2011

Designer

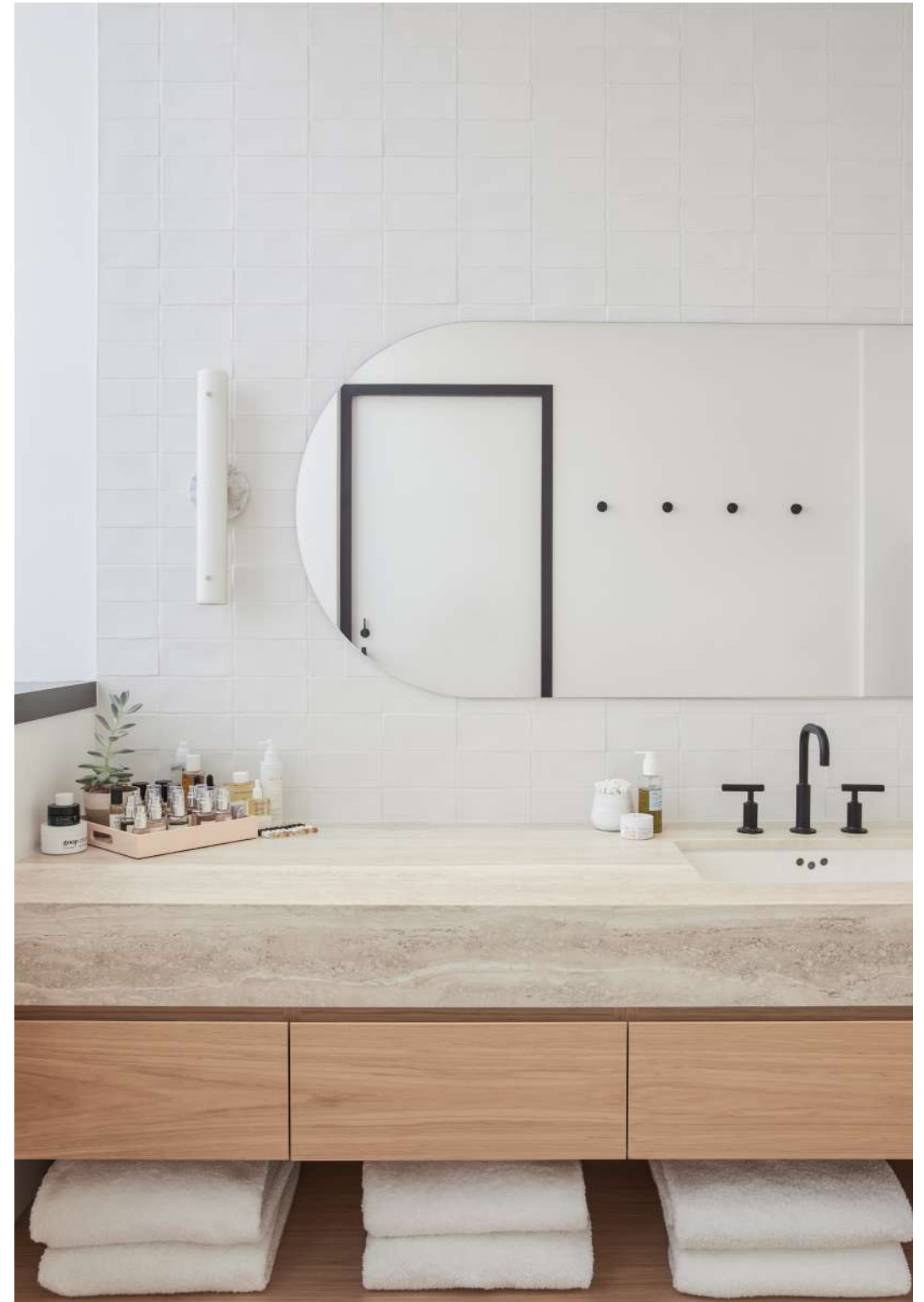
Fort Standard is a contemporary design studio and manufacturer based in Greenpoint, Brooklyn. Founder and Designer Gregory Buntain explores the interplay of natural materials and modern production processes to create distinctive designs rooted in simplicity and functionality. Merging progressive design thinking with an obsessive approach to craft, Fort Standard's lighting, furniture and home goods help transform everyday spaces into ideal living environments.

Features

Pendant drop length and height are adjustable.

Lamping 120V & 240V

Integrated LED





LIGHTING & MATERIALS

Pendant
Walnut

APPROX. MEASUREMENTS

L 64 in x W 2.5 in x H 12 in
L 163 cm x W 6 cm x H 30 cm



LIGHTING & MATERIALS

Rectangle Sconce
Ash

APPROX. MEASUREMENTS

H 18 in x W 5 in x D 4 in
H 46cm x W 13cm x D 10cm



Natura Artis Magistra – Amsterdam

LIGHTING & MATERIALS

Circle Sconce (8)
Ash

APPROX. MEASUREMENTS

H 18 in x W 5 in x D 4 in
H 46 cm x W 13 cm x D 10 cm



LIGHTING & MATERIALS

Pendant
Ash

APPROX. MEASUREMENTS

Detail

Eclipse

by Philippe Malouin

Named for its resemblance to the celestial phenomenon, this semi-spherical sconce by Philippe Malouin creates a corona of light that becomes larger and brighter as it extends from the wall.



LIGHTING & MATERIALS

Sconce

Black

APPROX. MEASUREMENTS

H 7 in x W 6 in x D 5 in

H 18 cm x W 16 cm x D 12 cm

Finishes

- Black
- Chrome
- Polished Brass

Features

- Lamp dims manually by adjusting distance to wall.
- Integrated switch turns fixture off when completely retracted.
- Fixed lamp maintains constant distance from the wall.

Details

Materials
Brass, Steel, Glass

Lamping 120V & 240V

Integrated LED

Year

2015

Designer

British-Canadian Philippe Malouin holds a bachelor's degree in Design from the Design Academy Eindhoven. He has also studied at the École Nationale Supérieure de Création Industrielle in Paris and University of Montreal. He set up his studio in 2008 after working for English designer Tom Dixon. Philippe also taught at the Royal College of Art in London between 2012–2015. He is the director of architectural and interiors design practice POST-OFFICE.

His diverse portfolio includes tables, rugs, chairs, lights, art objects and installations. Recently, Philippe won the Wallpaper* Magazine 'Designer of the Year' award. Philippe lives and works in London.





Roll & Hill — New York

LIGHTING & MATERIALS

Sconce
Black

APPROX. MEASUREMENTS

H 7 in x W 6 in x D 5 in
H 18 cm x W 16 cm x D 12 cm



LIGHTING & MATERIALS

Sconce
Chrome

APPROX. MEASUREMENTS

H 7 in x W 6 in x D 5 in
H 18 cm x W 16 cm x D 12 cm

LIGHTING & MATERIALS

Sconce
Polished Brass

APPROX. MEASUREMENTS

H 7 in x W 6 in x D 5 in
H 18 cm x W 16 cm x D 12 cm

Endless — Woody Endless

by Jason Miller

Jason Miller's Endless collection takes its inspiration from 1970s Super-graphics. After the reductionist intentions of modernism faded, some architects began to use large-scale graphic elements to define space. Graphic design became architecture; Endless was designed in the same spirit. Cylindrical sections and corner units allow Endless to be custom-configured as an architectural element.



LIGHTING & MATERIALS

5 Units

Black

APPROX. MEASUREMENTS

L 94 in x W 6 in x H 7.5 in

L 239 cm x W 15 cm x H 19 cm

Finishes

- Black
- Bronze
- Stained Oak (Woody Endless)
- Brushed Brass

Canopy



A

A. 5-inch / 12.7-cm round in matching metal finish

Lamping 120V & 240V

Integrated LED

Details

Materials

Aluminum,
Acrylic, Wood

Suspension

1/2-inch / 1.3-cm aluminum stem in matching metal finish.
Stem length can be adjusted on site. .

Dimmer Compatibility

120V: Triac, Electronic Low Voltage (ELV) or 0-10V
240V: Electronic Low Voltage (ELV) or 0-10V

Year

2012

Designer

Jason Miller is a Brooklyn-based designer and the founder of Roll & Hill. Born in New York and raised in Darien, Connecticut, Jason's suburban upbringing heavily influenced his early, more conceptual pieces — duct-taped chairs and cracked vases, among them — and continues to inform the elegant, historically rich work that has become his signature. Jason received an MFA in painting and spent time in both the art and advertising worlds, but soon realized he preferred making things to documenting them. His designs — like a mirror whose photographic surface recalls a painted landscape — still often reflect those early preoccupations, but each is a functional object, with a kind of beauty and wit. Today, Jason runs both Jason Miller Studio and Roll & Hill from his headquarters in Sunset Park, Brooklyn.





Private Residence — Paris

LIGHTING & MATERIALS

3 Units

Black / Stained Oak

APPROX. MEASUREMENTS

L 55 in x W 6 in x H 7.5 in

L 140 cm x W 16 cm H 19 cm



LIGHTING & MATERIALS

5 Units

Black / Stained Oak

APPROX. MEASUREMENTS

L 91 in x W 6 in x H 7.5 in

L 231 cm x W 16 cm x H 19 cm



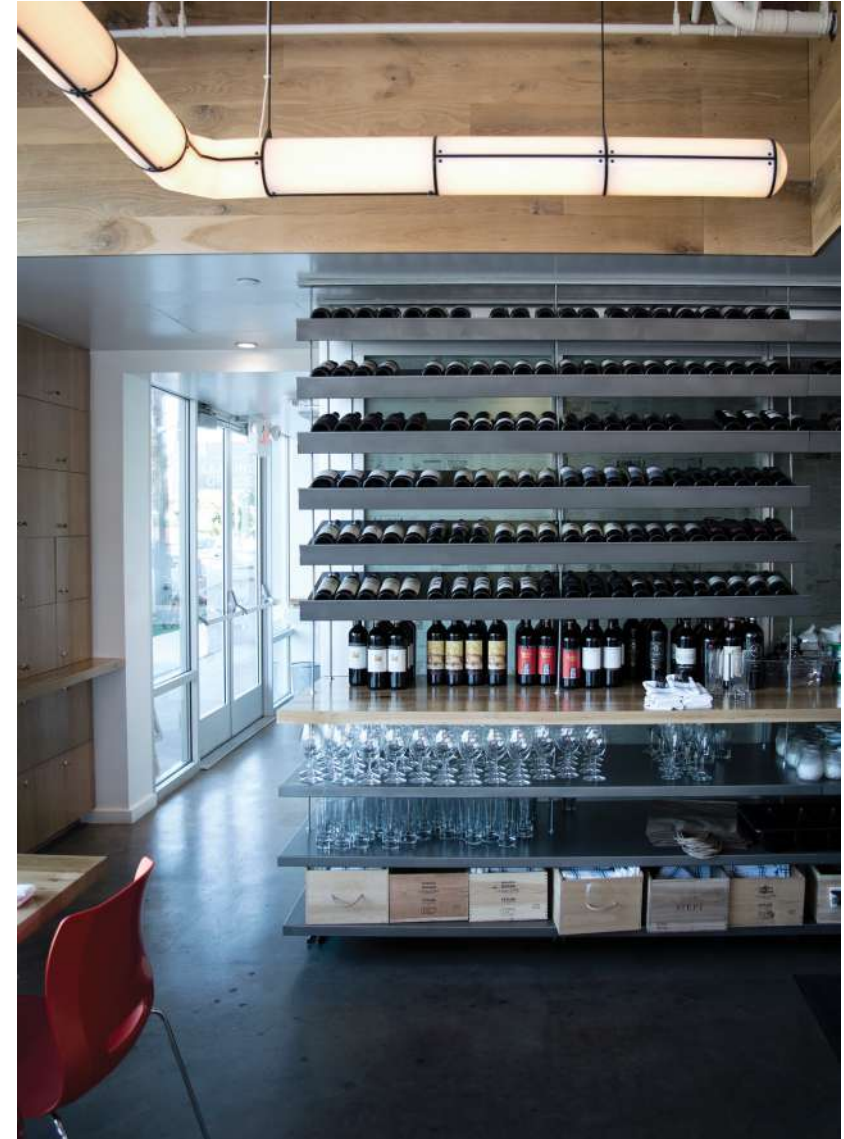
Private Residence — Washington, DC

LIGHTING & MATERIALS

3 Units
Brushed Brass

APPROX. MEASUREMENTS

L 58 in x W 6 in x H 7.5 in
L 148 cm x W 16 cm x H 19 cm



Hostaria del Piccolo — Los Angeles

LIGHTING & MATERIALS

Custom Configuration
Black

APPROX. MEASUREMENTS

Custom Configuration

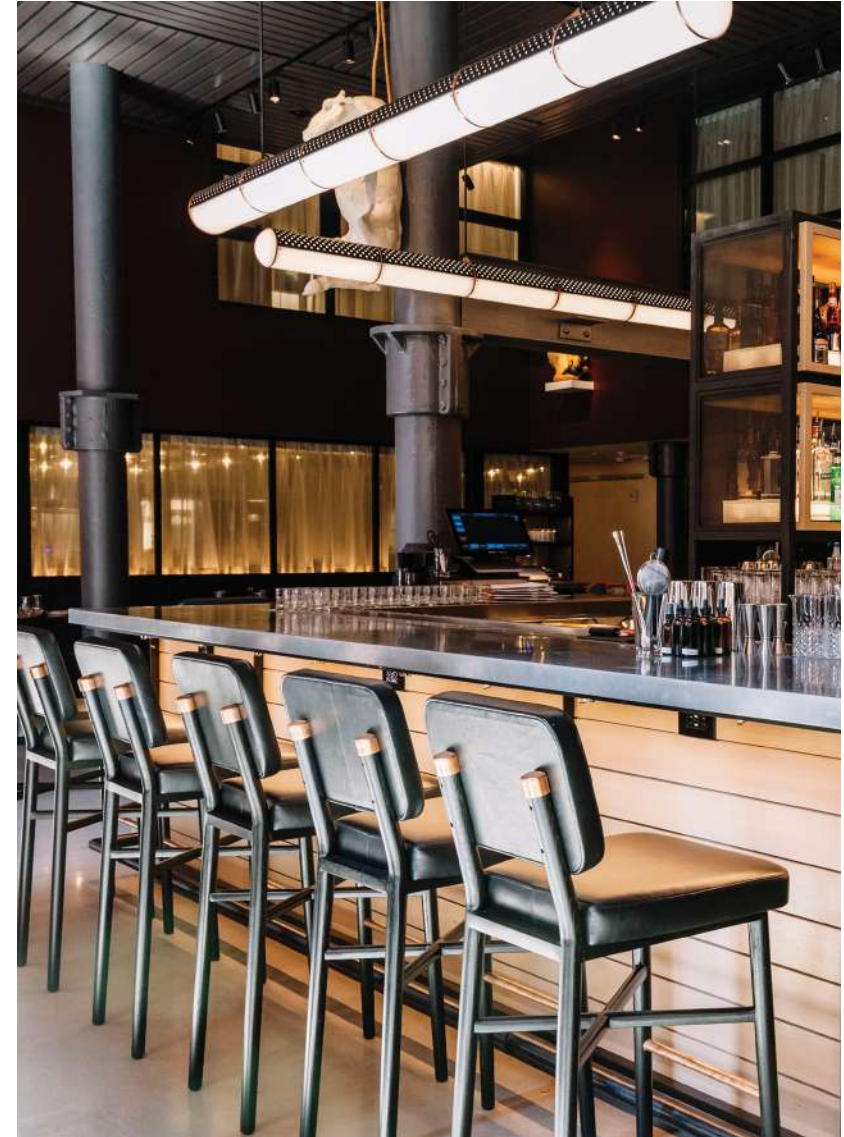


LIGHTING & MATERIALS

3 Units / Brushed Brass
5 Units / Black

APPROX. MEASUREMENTS

L 58 in x W 6 in x H 7.5 in (3 Units)
L 94 in x W 6 in x H x 7.5 in (5 Units)



Grey & Dudley – Nashville

LIGHTING & MATERIALS

Custom Configuration
Custom Finish

APPROX. MEASUREMENTS

Custom Configuration

Esper

by **Visibility**

The Esper Lanterns take inspiration from chochins, the archetypal lanterns typically found outside sushi restaurants and late night hang-outs in Japan. The three different forms are distortions of the iconic lanterns, with smooth and spartan shapes that look to the future while retaining the humility of centuries past.



LIGHTING & MATERIALS

Pendant 03

Blackened Steel / White

APPROX. MEASUREMENTS

Dia. 13 in × H 24.5 in

Dia. 32 cm × H 62 cm

Finishes

● Blackened Steel

Glass Color

○ White

Canopy



A

A. 5-inch round / 12.7-cm in matching metal finish

Lamping 120V & 240V

Integrated LED

Details

Materials
Glass, Steel,
Aluminum

Suspension
96-inch / 244-cm cord.
Length can be adjusted on site.

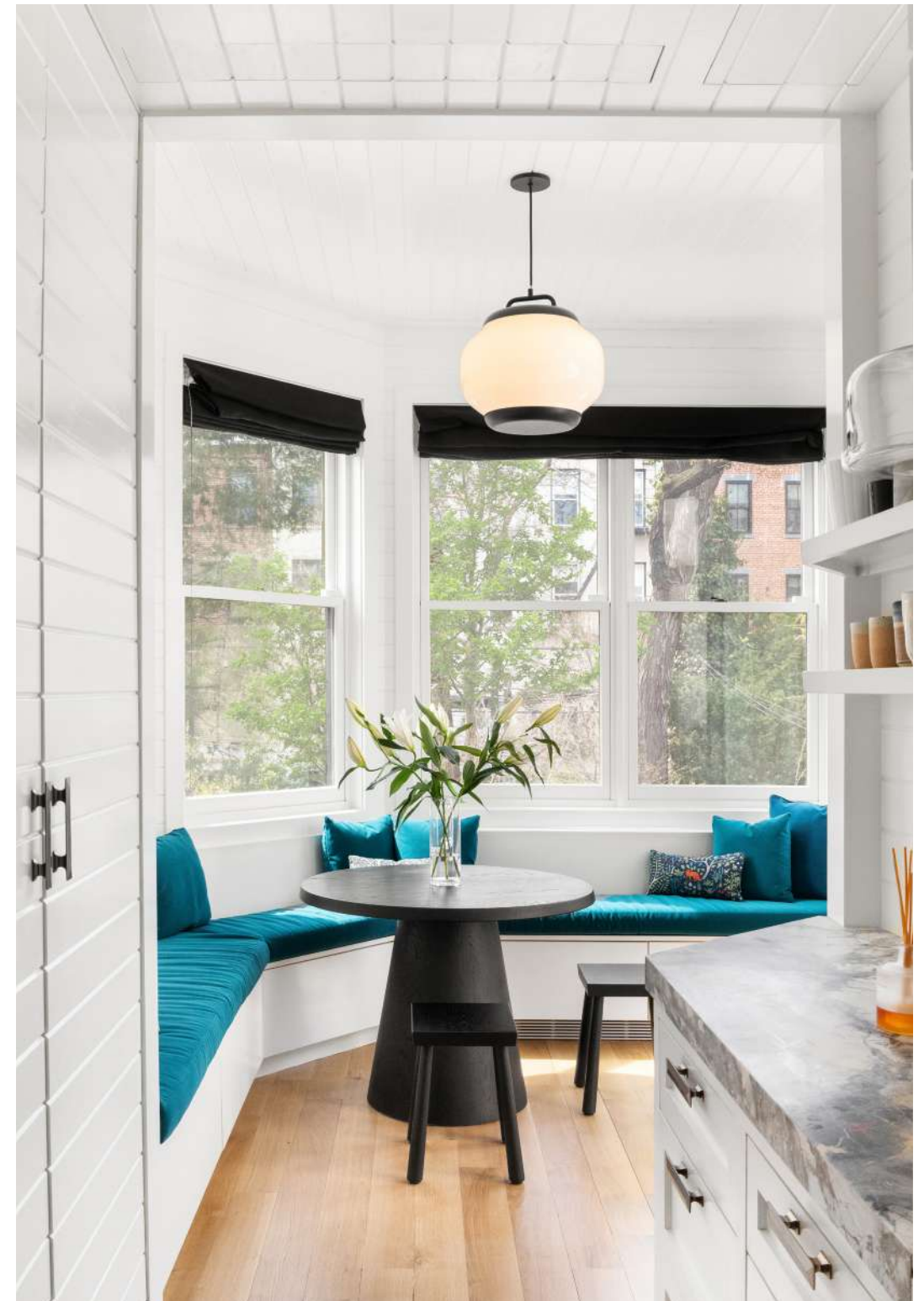
Dimmer Compatibility
Triac or Electronic Low Voltage (ELV)

Year

2016

Designer

Visibility is an industrial design office based in New York City. It was founded by Joseph Guerra and Sina Sohrab in 2012. The office focuses on the purity of an idea, as well as its material and formal actualities. The constant ambition is to move forward while looking back, drawing on observation and innovation as instruments of development. Visibility aims to distill an object to what it wants to be, retaining what appeals to our human sensibilities.





Roll & Hill — New York

LIGHTING & MATERIALS

Table Lamp
Blackened Steel / White

APPROX. MEASUREMENTS

Dia. 11 in x H 14 in
Dia. 27 cm x H 36 cm



LIGHTING & MATERIALS

Table Lamp
Blackened Steel / White

APPROX. MEASUREMENTS

Detail



LIGHTING & MATERIALS

Pendant 02
Blackened Steel / White

APPROX. MEASUREMENTS

Dia. 18 in x H 17.5 in
Dia. 45 cm x H 44 cm



LIGHTING & MATERIALS

Pendant 01
Blackened Steel / White

APPROX. MEASUREMENTS

Dia. 11 in x H 14.5 in
Dia. 27 cm x H 37 cm

Excel

by Rich Brilliant Willing

Spare and playful, Excel is a family of fixtures made from elegant wood and metal poles and an illuminated, bold shade. Inspired by the lines and geometric charts of the Microsoft spreadsheet program, the full Excel family includes the desk lamp, wall sconce, floor lamp, and chandelier.



LIGHTING & MATERIALS

Chandelier

Black

APPROX. MEASUREMENTS

L 58 in x W 61 in x H 7 in

L 148 cm x W 154 cm x H 18 cm

Finishes — Desk Lamp

- Black/Oak
- White/Oak

Finishes — Sconce

- Black/Walnut
- White/Walnut
- Red/Walnut

Finishes — Floor Lamp

- Black/Oak
- White/Oak

Finishes — Chandelier

- Black
- White

Canopy



A. 5-inch / 12.7-cm round in white

Lamping



A. 120V

A. 240V

Sconce, Floor Lamp, Chandelier

A. 6-Watt LED, Frosted, A19 Shape, E26 Base

B. 6-Watt LED, Frosted, A19 Shape, E27 Base

Table Lamp

Integrated LED

Details

Materials
Aluminum, Fabric, Steel, Wood

Suspension
Chandelier: 96-inch / 244-cm cord.
Length can be adjusted on site.

Dimmer Compatibility
Triac or Electronic Low Voltage (ELV)
Table Lamp: Non-dimmable

Year

2008

Designer

Rich Brilliant Willing is a Brooklyn-based studio that designs and manufactures LED fixtures for hospitality, workplace, and residential projects. Incorporated in 2009 by Theo Richardson, Charles Brill and Alexander Williams, the studio has been a pioneering force in the use of LEDs in contemporary design, recognizing its potential to bring both warmth and energy efficiency to everyday life. Today, through an experimental approach guided by technology, creativity, and simplicity, the studio continues to break new ground in lighting design. Products range from subtle to statement pieces, continually providing new solutions to architects' and designers' needs.





LIGHTING & MATERIALS

Chandelier
Black

APPROX. MEASUREMENTS

Detail



Private Residence — Sagaponack

LIGHTING & MATERIALS

Table Lamp
Black / Oak

APPROX. MEASUREMENTS

H 20 in x W 10 in x D 19 in
H 50 cm x W 25 cm x D 48 cm



Private Residence — New York

LIGHTING & MATERIALS

Floor Lamp
Black / Oak

APPROX. MEASUREMENTS

H 86 in x W 51 in x D 33 in
H 218 cm x W 129 cm x D 83 cm



LIGHTING & MATERIALS

Chandelier / White
Sconce / Black / Walnut

APPROX. MEASUREMENTS

L 58 in x W 61 in x H 7 in (Chandelier)
H 12.5 in x W 24 in x D 11 in (Sconce)

Fiddlehead

by Jason Miller

Jason Miller's Fiddlehead is a series of lamps which derives its name from sprouting ferns. One end of Fiddlehead's long, furling arm gently balances a hand-blown glass globe; the other uses the ceiling as a counterbalance.



LIGHTING & MATERIALS

Pendant

Blackened Steel / Smoke

APPROX. MEASUREMENTS

L 10.5 in x W 10 in x H 30 in

L 27 cm x W 26 cm x H 76 cm

Finishes

- Blackened Steel
- Oil-Rubbed Bronze
- Brushed Brass

Glass Colors

- Smoke
- Clear
- Cream

Canopy



A. Cantilever B. Pendant

- A. 5-inch / 12.7-cm round in matching metal finish
- B. 5-inch / 12.7-cm round in matching metal finish

Lamping



A. 120V B. 240V

- Smoke / Clear**
- A. 6-Watt LED, Clear, G25 Globe, E26 Base
- B. 6-Watt LED, Clear, G25 Globe, E27 Base



C. 120V D. 240V

- Cream**
- C. 6-Watt LED, Frosted, A19 Shape, E26 Base
- D. 6-Watt LED, Frosted, A19 Shape, E27 Base

Details

Materials
Steel, Glass

Suspension
1/2-inch / 1.3-cm steel stem in matching metal finish. 35-inch length included with lamp. 96-inch length available for additional cost. Stem length can be adjusted on site."

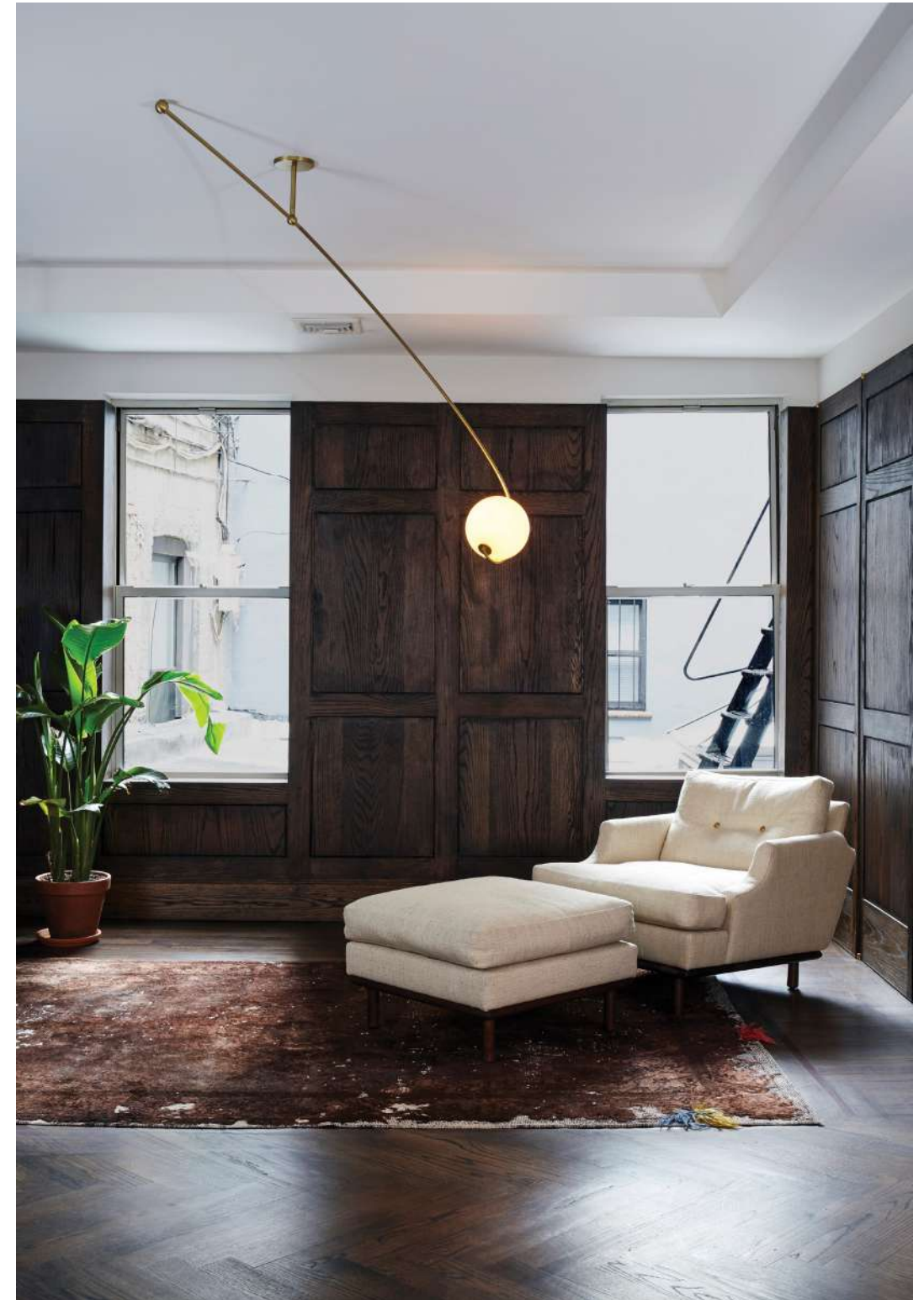
Dimmer Compatibility
Triac or Electronic Low Voltage (ELV)

Year

2014

Designer

Jason Miller is a Brooklyn-based designer and the founder of Roll & Hill. Born in New York and raised in Darien, Connecticut, Jason's suburban upbringing heavily influenced his early, more conceptual pieces — duct-taped chairs and cracked vases, among them — and continues to inform the elegant, historically rich work that has become his signature. Jason received an MFA in painting and spent time in both the art and advertising worlds, but soon realized he preferred making things to documenting them. His designs — like a mirror whose photographic surface recalls a painted landscape — still often reflect those early preoccupations, but each is a functional object, with a kind of beauty and wit. Today, Jason runs both Jason Miller Studio and Roll & Hill from his headquarters in Sunset Park, Brooklyn.





Wm. Mulherin's Sons — Philadelphia

LIGHTING & MATERIALS

Pendant
Oil-Rubbed Bronze / Cream

APPROX. MEASUREMENTS

L 10.5 in x W 10 in x H 30 in
L 27 cm x W 25 cm x H 76 cm



Roll & Hill — New York

LIGHTING & MATERIALS

Cantilever
Blackened Steel / Cream

APPROX. MEASUREMENTS

L 99 in x W 10 in x H 33 in
L 252 cm x W 25 cm x H 84 cm



LIGHTING & MATERIALS
Cantilever
Bronze / Cream

APPROX. MEASUREMENTS
L 99 in x W 10 in x H 33 in
L 252 cm x W 25 cm x H 84 cm



LIGHTING & MATERIALS
Pendant
Black / Clear

APPROX. MEASUREMENTS
L 10.5 in x W 10 in x H 30 in
L 27 cm x W 25 cm x H 76 cm



LIGHTING & MATERIALS
Cantilever
Brushed Brass / Cream

APPROX. MEASUREMENTS
Detail



LIGHTING & MATERIALS
Sconce
Brushed Brass / Smoke

APPROX. MEASUREMENTS
H 10.5 in x W 10 in x D 11 in
H 27 cm x W 25 cm x D 28 cm



LIGHTING & MATERIALS

Sconce
Brushed Brass / Clear

APPROX. MEASUREMENTS

H 10.5 in x W 10 in x D 11 in
H 27 cm x W 25 cm x D 28 cm



Private Residence — New York

LIGHTING & MATERIALS

Pendant (3)
Brushed Brass / Cream

APPROX. MEASUREMENTS

L 10.5 in x W 10 in x H 30 in
L 27 cm x W 25 cm x H 76 cm

Geode

by Jason Miller

Geode is made of three layers of solid, hand-blown glass, and carefully ground to a hemisphere. The process exposes a smooth, pale center, and a bold halo beneath the colored exterior.

LIGHTING & MATERIALS

Sconce

Pink / Polished Brass

APPROX. MEASUREMENTS

L 6.5 in x W 4 in x H 7.5 in

L 17 cm x W 10.6 cm x H 19 cm



Finishes

- Polished Brass
- Polished Nickel
- Blackened Steel

Glass Color

- Pink
- Cream
- Brown

Lamping 120V & 240V

Integrated LED

Details

Materials

Glass, Aluminum, Stainless Steel

Backplate

5.5-inch / 14-cm round in coordinating metal finish

Dimmer Compatibility

Triac, Electronic Low Voltage (ELV) or 0-10V

Year

2019

Designer

Jason Miller is a Brooklyn-based designer and the founder of Roll & Hill. Born in New York and raised in Darien, Connecticut, Jason's suburban upbringing heavily influenced his early, more conceptual pieces — duct-taped chairs and cracked vases, among them — and continues to inform the elegant, historically rich work that has become his signature. Jason received an MFA in painting and spent time in both the art and advertising worlds, but soon realized he preferred making things to documenting them. His designs — like a mirror whose photographic surface recalls a painted landscape — still often reflect those early preoccupations, but each is a functional object, with a kind of beauty and wit. Today, Jason runs both Jason Miller Studio and Roll & Hill from his headquarters in Sunset Park, Brooklyn





LIGHTING & MATERIALS
Sconce
Cream / Polished Nickel

APPROX. MEASUREMENTS
L 6.5 in x W 4 in x H 7.5 in
L 17 cm x W 10.6 cm x H 19 cm



LIGHTING & MATERIALS
Sconce
Brown / Blackened Steel

APPROX. MEASUREMENTS
L 6.5 in x W 4 in x H 7.5 in
L 17 cm x W 10.6 cm x H 19 cm



LIGHTING & MATERIALS
Sconce
Pink / Polished Brass

APPROX. MEASUREMENTS
L 6.5 in x W 4 in x H 7.5 in
L 17 cm x W 10.6 cm x H 19 cm



LIGHTING & MATERIALS
Sconce
Brown / Blackened Steel

APPROX. MEASUREMENTS
L 6.5 in x W 4 in x H 7.5 in
L 17 cm x W 10.6 cm x H 19 cm

Gridlock

by Philippe Malouin

Raw and unpretentious, Gridlock is a series of lamps in the style of the Brutalist movement. Gridlock feels industrial in its straightforward, platonic forms and the repetitive efficiency of the grid; however, it is assembled entirely by hand from thousands of tiny brass parts. Philippe Malouin's tribute to the industry-inspired, labour-saving dreams of modernism is paid for in toil.



LIGHTING & MATERIALS

Pendant — 7440

Raw Brass

APPROX. MEASUREMENTS

L 38 in x W 38 in x H 20.5 in

L 96 cm x W 96 cm x H 52 cm

Finishes

● Raw Brass

Canopy



A

A. 5-inch / 12.7-cm square in matching metal finish

Lamping 120V & 240V

Integrated LED

Details

Materials

Brass, Steel

Suspension

5/8-inch steel stem in matching metal finish. 35-inch length included with lamp. 96-inch length available for additional cost. Stem length can be adjusted on site.

Dimmer Compatibility

Sconce: Triac or Electronic Low Voltage (ELV)
Pendants, Ceiling Mount: Triac, Electronic Low Voltage (ELV) or 0-10V

Year

2010

Designer

British-Canadian Philippe Malouin holds a bachelor's degree in Design from the Design Academy Eindhoven. He has also studied at the École Nationale Supérieure de Création Industrielle in Paris and University of Montreal. He set up his studio in 2008 after working for English designer Tom Dixon. Philippe also taught at the Royal College of Art in London between 2012–2015. He is the director of architectural and interiors design practice POST-OFFICE.

His diverse portfolio includes tables, rugs, chairs, lights, art objects and installations. Recently, Philippe won the Wallpaper* Magazine 'Designer of the Year' award. Philippe lives and works in London.





Holiday House London 2017 — London

LIGHTING & MATERIALS

Ceiling Mount — 5640

Raw Brass

APPROX. MEASUREMENTS

L 38 in x W 38 in x H 12 in

L 96 cm x W 96 cm x H 31 cm



Poliform — New York

LIGHTING & MATERIALS

Pendant — 1912

Raw Brass

APPROX. MEASUREMENTS

L 22 in x W 22 in x H 13 in

L 56 cm x W 56 cm x H 32 cm



LIGHTING & MATERIALS

Pendant — 1912
Custom Finish

APPROX. MEASUREMENTS

L 22 in x W 22 in x H 13 in
L 56 cm x W 56 cm x H 32 cm



LIGHTING & MATERIALS

Sconce — 193
Raw Brass

APPROX. MEASUREMENTS

H 14 in x W 6 in x D 5 in
H 36 cm x W 15 cm x D 13 cm

Half & Half

by Takagi & Homstvedt

A literal declaration of form, Jonah Takagi and Hallgeir Homstvedt have created a sense of completeness in their recent collaboration with Roll & Hill. The play between the geometric shapes was the starting point for this design. Half & Half is in many ways the archetype of a pendant lamp.



LIGHTING & MATERIALS

Pendant — Cone

Black / Clear Frosted

APPROX. MEASUREMENTS

Dia 13 in x H 14.5 in

Dia 33 cm x H 41 cm

Finishes

- Black
- Green
- White
- Blue
- Red

Glass Colors

- Clear Frosted

Canopy



A

A. 5-inch / 12.7-cm round canopy in white

Lamping



A. 120V

B. 240V

A. 6-Watt LED, Frosted, A19 Shape, E26 Base
B. 6-Watt LED, Frosted, A19 Shape, E27 Base

Details

Materials
Steel, Glass

Suspension
144-inch / 366-cm cord.
Length can be adjusted on site.

Dimmer Compatibility
Triac or Electronic Low Voltage (ELV)

Year

2018

Designer

While Hallgeir Homstvedt and Jonah Takagi have been friends for years, their first collaboration as designers came only recently as part of an exhibition curated by the influential design blog Sight Unseen and sponsored by the Embassy of Norway. Half & Half for Roll & Hill is the first co-designed product that they have licensed.

Hallgeir Homstvedt holds a BA of Industrial Design from Newcastle University in Australia. After completing his degree in 2006, Hallgeir went on to work for the much celebrated design studio Norway Says before opening his own design studio in 2009. Hallgeir has exhibited his work in London, Tokyo, Oslo, New York & Milan. Among his clients are renowned Norwegian and international furniture manufacturers like Lexon, Muuto, L.K.Hjelle and Established & Sons.

Jonah Takagi received a BFA in Furniture Design from the Rhode Island School of Design in 2002. After several years of life on the road as a touring musician, Jonah launched his studio in 2010. He has exhibited work throughout Europe and America and counts among his clients such esteemed brands as Roll and Hill, Matter Made, La Chance and Hem.





LIGHTING & MATERIALS

Pendant – Hemisphere
Green / Clear Frosted

APPROX. MEASUREMENTS

Dia 13 in x H 13 in
Dia 33 cm x H 33 cm



LIGHTING & MATERIALS

Pendant – Hemisphere
White / Clear Frosted

APPROX. MEASUREMENTS

Dia 13 in x H 13 in
Dia 33 cm x H 33 cm



LIGHTING & MATERIALS

Pendant – Cone
Blue / Clear Frosted

APPROX. MEASUREMENTS

Dia 13 in x H 14.5 in
Dia 33 cm x H 41 cm



LIGHTING & MATERIALS

Pendant – Cone
Red / Clear Frosted

APPROX. MEASUREMENTS

Dia 13 in x H 14.5 in
Dia 33 cm x H 41 cm



De La Espada Showcase – Lisbon

LIGHTING & MATERIALS

Pendant – Cone
Black / Clear Frosted

APPROX. MEASUREMENTS

Dia 13 in x H 14.5 in
Dia 33 cm H 41 cm



LIGHTING & MATERIALS

Pendant – Cone
Green / Clear Frosted

APPROX. MEASUREMENTS

Dia 13 in x H 13 in
Dia 33 cm x H 41 cm

Halo

by Paul Loebach

Paul Loebach envisioned the Halo series as a graceful exercise in the use of energy-efficient LED technology. The collection, which includes a range of ceiling and wall lights, is distinguished by its use of cascading rings and bars of light.



LIGHTING & MATERIALS

Chandelier — 4 Rings

Brushed Brass

APPROX. MEASUREMENTS

Dia. 47 in x H 42 in

Dia. 120 cm x H 106 cm

Finishes

- Blackened Steel
- Oil-Rubbed Bronze
- Brushed Brass
- Polished Nickel

Canopy



A. Pendant B. Chandelier

- A. 5-inch / 12.7-cm round in matching metal finish
- B. 10-inch / 25.4-cm round in matching metal finish

Lamping 120V & 240V

Integrated LED

Details

Materials
Steel, Acrylic

Suspension
1/2-inch / 1.3-cm (for pendant) or 5/8-inch / 1.6-cm (for chandelier) steel stem in matching metal finish.
35-inch / 89-cm length included with lamp.
96-inch / 244-cm length available for additional cost.
Stem length can be adjusted on site.

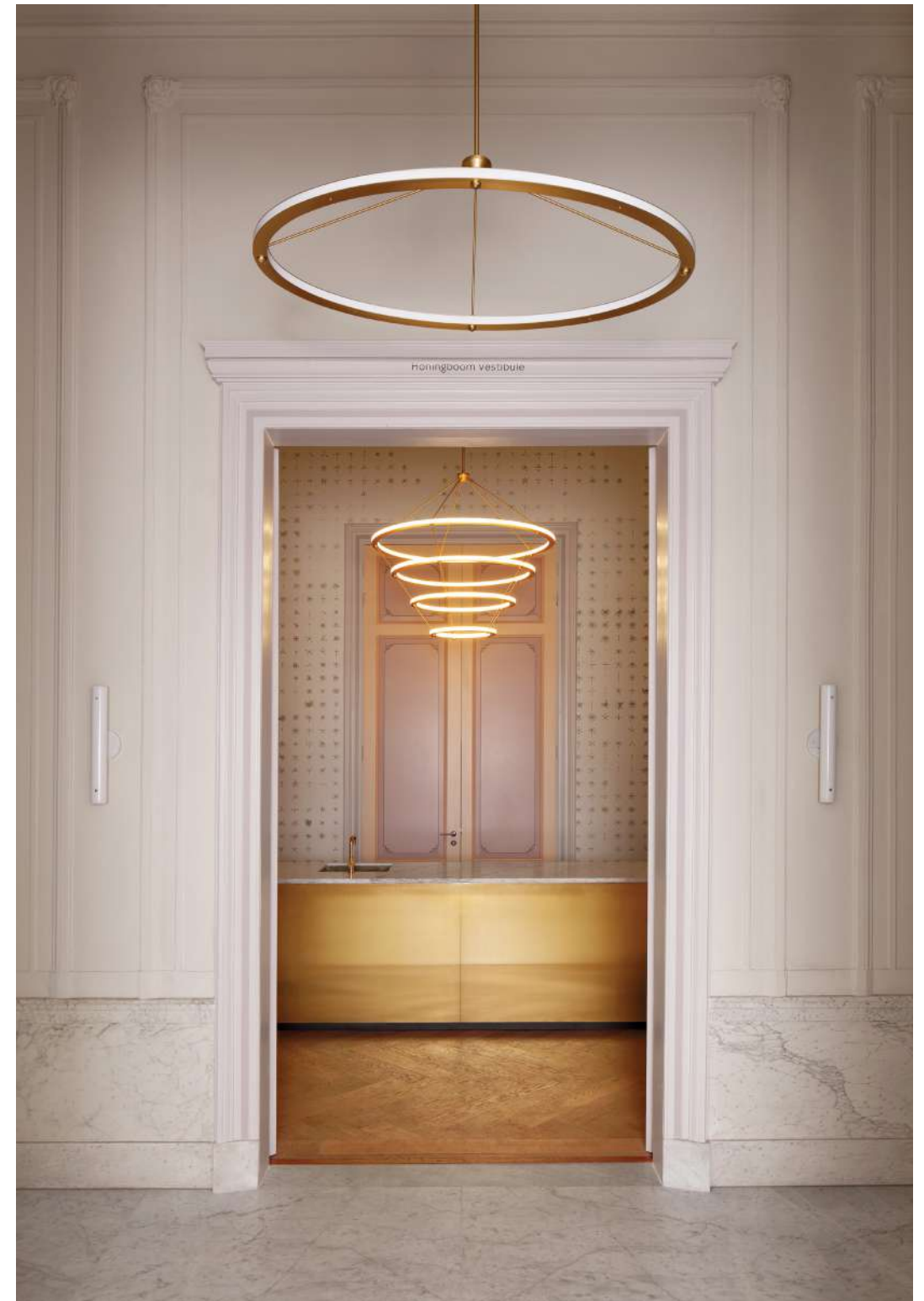
Dimmer Compatibility
120V: Triac, Electronic Low Voltage (ELV) or 0-10V
240V: Electronic Low Voltage (ELV) or 0-10V

Year

2011

Designer

Paul Loebach was raised in Cincinnati, Ohio amid the industrial landscape of the American Midwest. Descended from a long line of German woodworkers, his father is a manufacturing engineer who developed new plastic forming technologies for Union Carbide in the 1970s. Paul sees his projects as an idealistic fusion of his family's distant and more recent history. After graduating from the Rhode Island School of Design in 2002, Paul moved to New York City and established a design studio. He specializes in wood furniture and emerging manufacturing technologies.





goop — Santa Monica

LIGHTING & MATERIALS

Circle Pendant
Brushed Brass

APPROX. MEASUREMENTS

Dia. 42 in x H 17 in
Dia. 107 cm x H 42 cm



LIGHTING & MATERIALS

Sconce — 32 inches
Polished Nickel

APPROX. MEASUREMENTS

H 2.8 in x W 31.3 in x D 1.6 in
H 7 cm x W 79 cm x D 4 cm



Private Residence – Brentwood

LIGHTING & MATERIALS

Circle Pendant
Blackened Steel

APPROX. MEASUREMENTS

Dia. 42 in x H 17 in
Dia. 107 cm x H 42 cm



LIGHTING & MATERIALS

Chandelier – 3 Rings
Polished Nickel

APPROX. MEASUREMENTS

Dia. 42 in x H 36 in
Dia. 107 cm x H 91 cm



LIGHTING & MATERIALS

Chandelier – 4 Rings
Black

APPROX. MEASUREMENTS

Detail



LIGHTING & MATERIALS

Custom Configuration
Brushed Brass

APPROX. MEASUREMENTS

Custom Configuration



LIGHTING & MATERIALS

Rectangle Pendant
Polished Nickel

APPROX. MEASUREMENTS

L 58 in x W 25 in x H 14.5 in
L 147 cm x W 64 cm x H 37 cm



Fashion Tower — New York

LIGHTING & MATERIALS

Halo Chandelier - 4 Rings
Brushed Brass

APPROX. MEASUREMENTS

Dia 47 in x H 42 in
Dia 120 cm x H 106 cm

Kazimir

by Ladies & Gentlemen Studio

The Kazimir series is inspired by the early twentieth-century Russian modernist Kazimir Malevich, whose flat monochromatic canvases, colorful geometric compositions, and textured collages challenged existing notions of painting. Here, his ideas are transformed into three dimensions with pieces of textured and dichroic glass arranged around an illuminated triangular frame. The multi-layered hanging light celebrates shapes and colors and proposes a unique experience based on the position of the viewer.



LIGHTING & MATERIALS

Pendant

Satin Nickel

APPROX. MEASUREMENTS

L 21.5 in x W 21.5 in x H 30 in

L 54 cm x W 54 cm x H 76 cm

Finishes

● Satin Nickel

● Satin Brass

Canopy



A

A. 12-inch / 30.5-cm triangle in matching metal finish

Lamping 120V & 240V

Integrated LED

Details

Materials

Glass, Steel,
Aluminum

Suspension

96-inch / 244-cm cord and aircraft cable.
Length can be adjusted on site.

Dimmer Compatibility

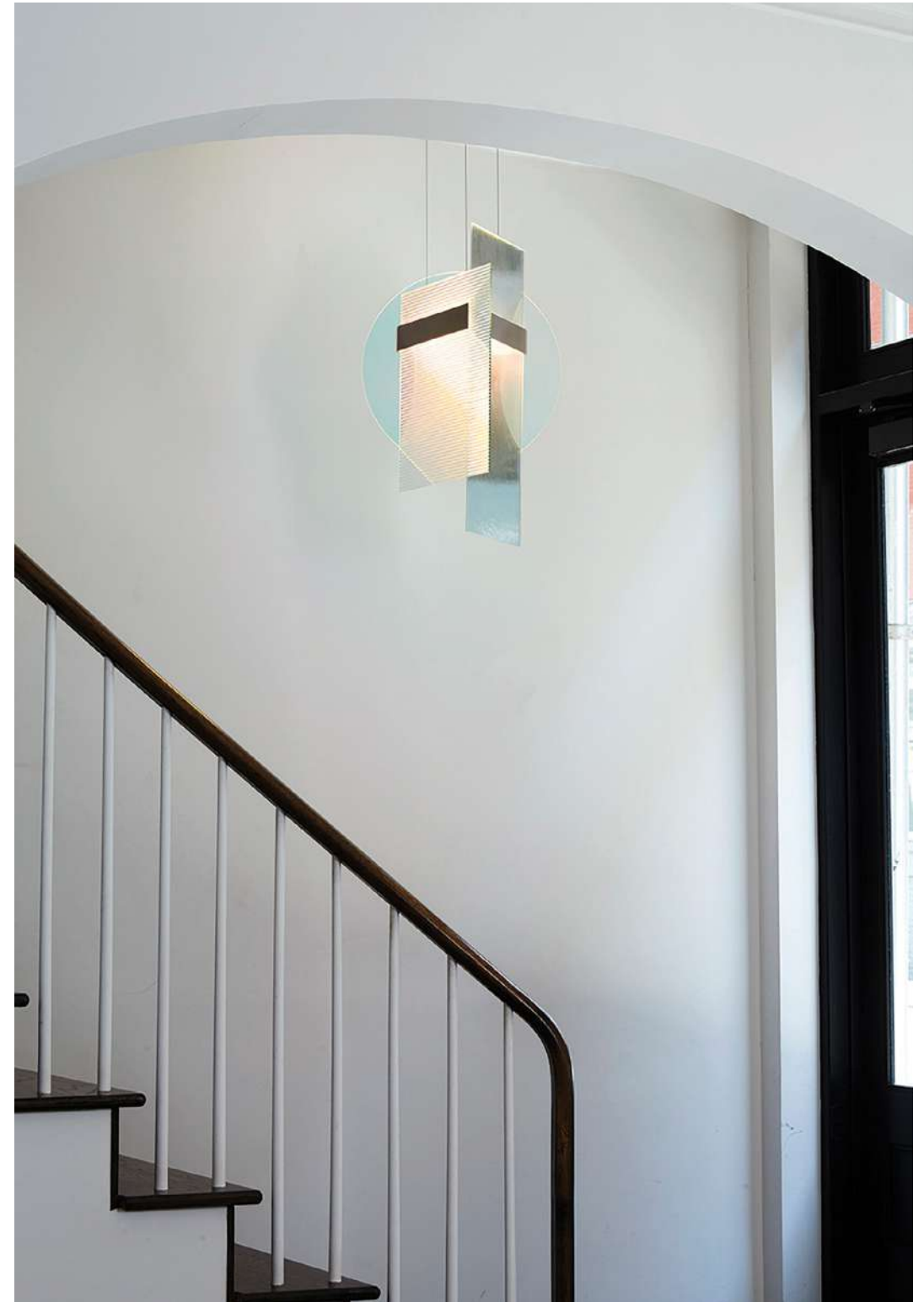
Sconce 120V/240V: Electronic Low Voltage (ELV)
Pendant 120V: Triac, Electronic Low Voltage (ELV) or 0-10V
Pendant 240V: Electronic Low Voltage (ELV) or 0-10V

Year

2015

Designer

Ladies & Gentlemen Studio is a Brooklyn-based design studio with a diverse focus. Founded by Dylan Davis & Jean Lee in 2010, L&G Studio's playful explorations in materiality blend their resourceful curiosity with the desire to find unexpected pairings of material and function. The results possess an expressive yet refined purity, and range from jewelry to home furnishings. Their open, multidisciplinary approach to design yields an ever-evolving set of ideas collected from their daily experiments and discoveries.





LIGHTING & MATERIALS

Pendant
Satin Nickel

APPROX. MEASUREMENTS

L 21.5 in x W 21.5 in x H 30 in
L 54 cm x W 54 cm x H 76 cm



LIGHTING & MATERIALS

Sconce
Satin Nickel

APPROX. MEASUREMENTS

H 9.5 in x W 13 in x D 1.5 in
H 24 cm x W 34 cm x D 4 cm

Knotty Bubbles

by Lindsey Adelman

Inspired by Japanese packaging, buoys, and shibari, Knotty Bubbles is a sculptural light made of hand-blown glass “bubbles” bound together with knotted rope.



LIGHTING & MATERIALS

Chandelier - 3 Lg, 2 Sm Bubbles, 5 Barnacles

Khaki / Clear

APPROX. MEASUREMENTS

Dia. 43 in x H Custom

Dia. 109 cm x H Custom

Finishes

● Antique Brass

Glass Colors

○ Clear

○ Opal

Barnacle Colors

● Black with Gold

Rope Colors

● Natural

● Khaki

Canopy



A. 5-inch / 12.7-cm round in matching metal finish

Lamping



A. 120V B. 240V

A. 3-Watt LED, Clear, A15 Antique, E12 Base

B. 3-Watt LED, Clear, A15 Antique, E14 Base

Details

Materials

Glass, Rope, Steel, Brass

Suspension

Chandelier: Rope and marine hardware. Custom length.
Pendant: Rope and marine hardware. Custom length.

Dimmer Compatibility

Triac or Electronic Low Voltage (ELV)

Year

2010

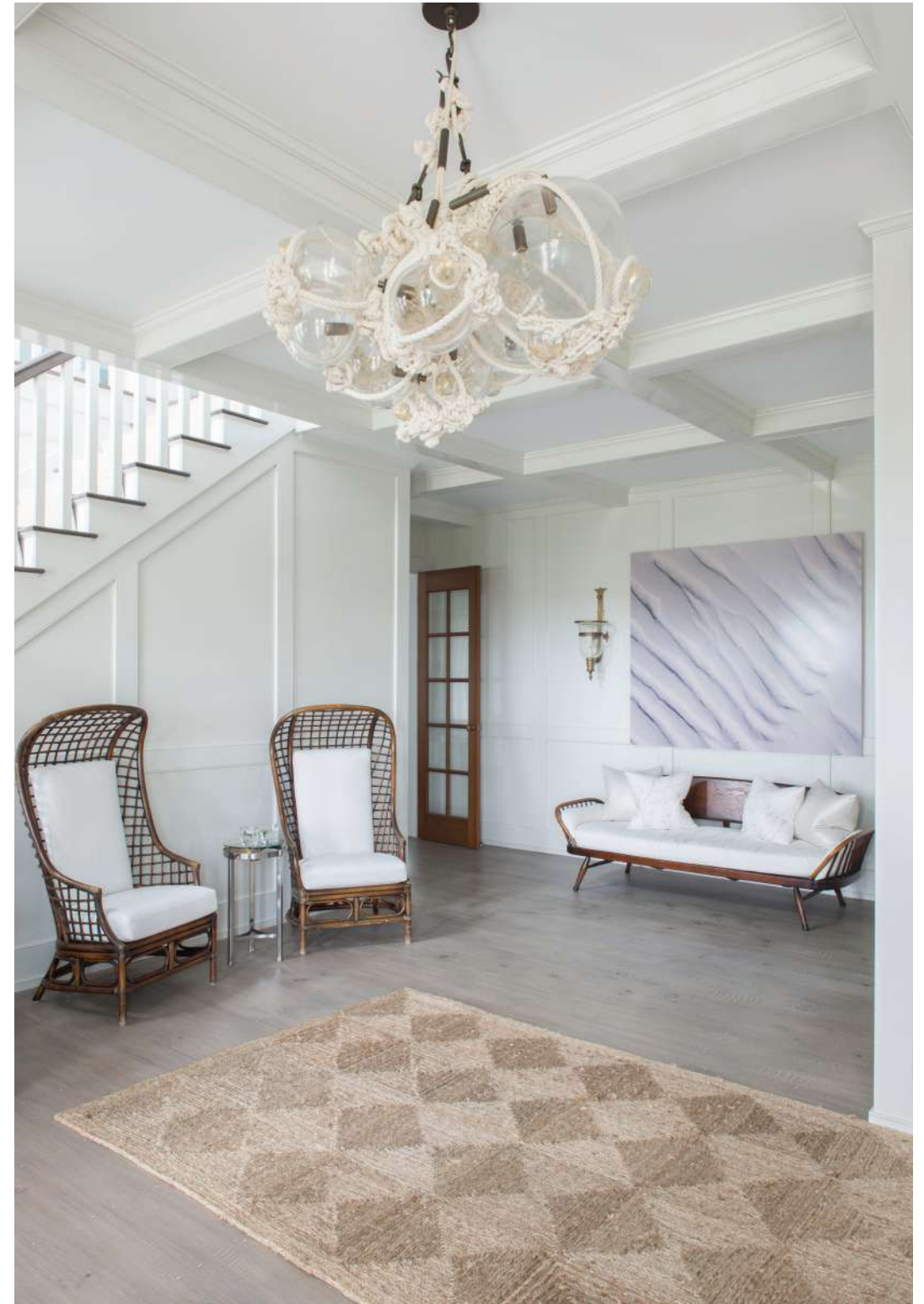
Designer

Lindsey Adelman lives and works in her hometown of New York City. She has specialized in lighting design since 1996. Founded in 2006, her studio has grown into a group of 40 with a recent location opening in Los Angeles.

The lighting collections are driven by developing industrial modular systems to capture the ephemeral, fleeting beauty of nature. Adelman first discovered Industrial Design when meeting a woman carving foam French Fries for an exhibition at her editorial job at the Smithsonian and went straight to study ID at the Rhode Island School of Design. She continues to be challenged and seduced by the immaterial substance of light and is obsessed with creating forms that maximize light's sensual effect and highlight emptiness.

Adelman's work has been exhibited at the Cooper-Hewitt National Design Museum, Design Miami, Nilufar Gallery, and BDDW, among others. For many years, the studio has embraced a philanthropic mission supporting the Robin Hood Foundation to fight poverty in New York City. Adelman credits much of the studio's current success to this desire to make an impact.

Adelman lives with her designer husband Ian and their son Finn in Brooklyn.





Private Residence – Bridgehampton

LIGHTING & MATERIALS

Chandelier – 1 Large, 2 Small Bubbles, 5 Barnacles
Natural / Opal

APPROX. MEASUREMENTS

Dia. 20 in x H Custom
Dia. 50 cm x H Custom



LIGHTING & MATERIALS

Chain – 1 Large, 2 Small Bubbles
Natural / Opal

APPROX. MEASUREMENTS

L Custom x W 17 in x H Custom
L Custom x W 43 cm x H Custom



LIGHTING & MATERIALS

Custom Configuration
Khaki / Clear

APPROX. MEASUREMENTS

Detail



Private Residence — Amagansett

LIGHTING & MATERIALS

Chandelier - 1 Lg, 2 Sm Bubbles, 5 Barnacles
Natural / Opal

APPROX. MEASUREMENTS

Dia 20 in x H Custom
Dia 50 cm x H Custom



LIGHTING & MATERIALS

Pendant – Small
Khaki / Opal

APPROX. MEASUREMENTS

Dia. 11 in x H 19 in
Dia. 28 cm x H 48 cm



Private Residence – East Hampton

LIGHTING & MATERIALS

Sconce – Small
Natural / Opal

APPROX. MEASUREMENTS

H 19 in x W 11 in x D 11 in
H 48 cm x W 28 cm x D 28 cm

Krane

by Ladies & Gentlemen and Vera & Kyte

Krane juxtaposes simple shapes that work in concert to create a versatile piece with multiple uses. Mimicking the functionality of a crane, the cord glides through the arch with ease to raise or lower the shade which is perfectly balanced by its counterweight. In repetition the wall mount creates an archway, adding an element of architecture.

LIGHTING & MATERIALS

Small Ceiling Mount

Black / White

APPROX. MEASUREMENTS

L 21 in x W 10 in x H adjustable

L 53 cm x W 26 cm x H adjustable



Finishes

● Black

Glass Colors

○ White

Features

Ceiling Mount features a counterweight that allows the overall drop length to be adjusted. Ceiling mount is powered via standard wall outlet.

Canopy



A

A. Ceiling Mount

Lamping 120V & 240V

Integrated LED

Details

Materials

Aluminum,
Glass, Steel

Suspension

Set drop length suitable for 8 to 9-foot ceiling height.
Customized drop length available upon request.

Dimmer Compatibility

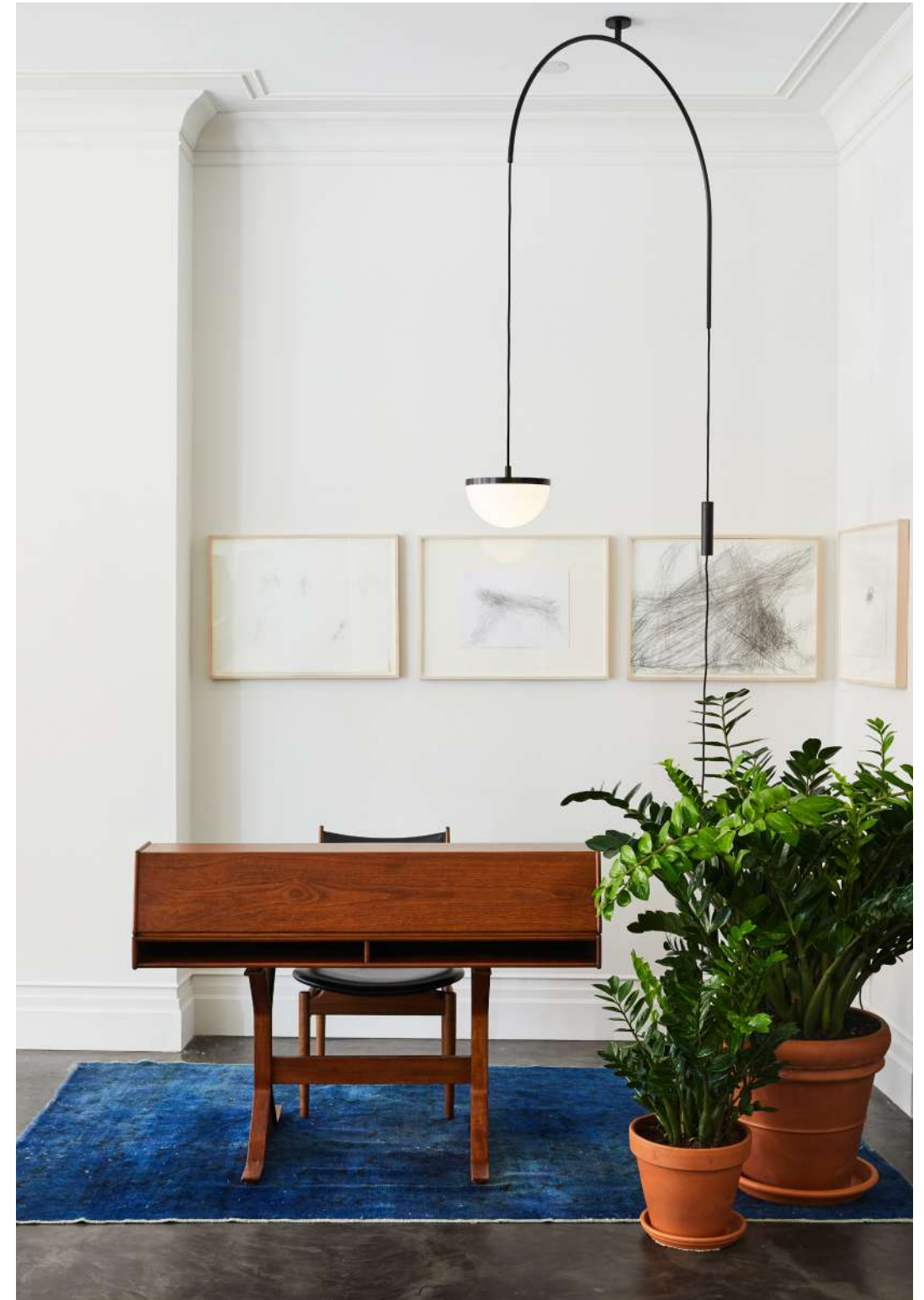
Ceiling Mount 120V/240V: Integrated
Cord Dimmer
Wall Mount 120V: Triac, Electronic Low
Voltage (ELV) or 0-10V
Wall Mount 240V: Electronic Low Voltage
(ELV) or 0-10V

Year

2018

Designer

Ladies & Gentlemen teamed up with Norwegian design studio Vera & Kyte to challenge traditional lighting archetypes through their collaborative piece, Krane — the result of the studios' shared affinity for simple, playful and sophisticated designs. The resulting lighting juxtaposes primary shapes that work in concert to create a versatile, user-defined approach to multiple interior situations. Its arch pulley, glass shade, and floor weight, encourage users to adjust it according to location and need.





LIGHTING & MATERIALS

Large Ceiling Mount
Black / White

APPROX. MEASUREMENTS

L 44 in x W 10 in x H adjustable
L 111 cm x W 26 cm x H adjustable



Private Residence — Michigan

LIGHTING & MATERIALS

Wall Mount
Black / White

APPROX. MEASUREMENTS

L 21 in x W 10 in x H 43 in
L 54 cm x W 26 cm x H 109 cm

Maxhedron

by Bec Brittain

Bec Brittain's Maxhedron is an enigmatic, sleek polyhedron with mirrored panels and plated brass hardware. When turned off, the partly translucent Maxhedron reflects and blends with its environment; when the light is on, its dazzling constellation of bulbs projects bands of light onto its surroundings.



LIGHTING & MATERIALS

30 inches — Horizontal

Oil-Rubbed Bronze / Transparent Mirror

APPROX. MEASUREMENTS

L 30 in x W 14 in x H 16 in

L 77 cm x W 35 cm x H 41 cm

Finishes

- Blackened Steel
- Oil-Rubbed Bronze
- Brushed Brass

Glass Options

- Transparent Mirror

Canopy



A. 5-inch / 12.7-cm round in matching metal finish (1-inch / 2.5-cm high)

Lamping 120V



A. 120V

A. 20-Watt G4 Halogen
B. 20-Watt G4 Halogen

Lamping 240V



B. 240V

Details

Materials

Brass, Steel,
Two-Way Mirror

Suspension

1/2-inch / 1.3-cm aluminum stem in matching metal finish.
35-inch / 89-cm length included with lamp.
96-inch / 244-cm length available for additional cost.
Stem length can be adjusted on site.

Dimmer Compatibility

Triac or Electronic Low Voltage (ELV)

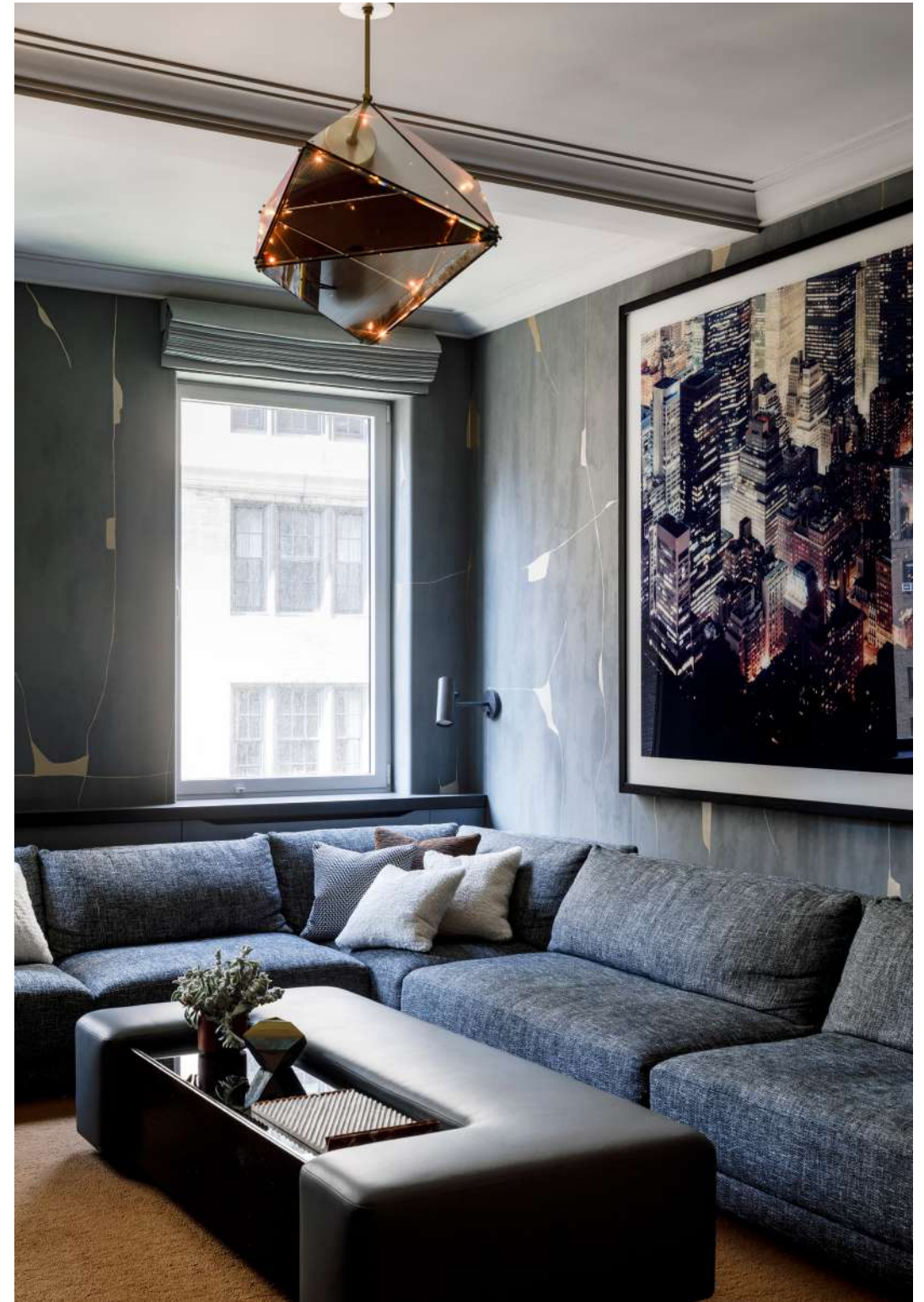
Year

2014

Designer

For Bec Brittain, designing lighting and products is the logical evolution of a lifelong interest in form, materials, and technology. She grew up surrounded by creative people: her mother is an artist; her father had a woodworking business; and her paternal grandparents (as well as her step-grandfather) were architects. After deciding that her initial interest in studying fashion design would lead to a career that was too trend-focused, Bec studied product design at Parsons before exploring the philosophy of design at NYU and the concepts behind architecture at the Architectural Association. An early job making custom door hardware led Bec to the realization that she loved the process of making things in metal, and a subsequent job as design director for Lindsey Adelman, the noted lighting designer, affirmed Bec's view that lighting embodied not just the challenges of engineering and technology, but also the playfulness of form and the richness of materials. By 2011, Bec had opened her own studio in Brooklyn and designed the critically-acclaimed SHY light, named for the initials of her grandmother, the architect Sarah Hitchcock Yerkes, one of the first women to receive a master's degree in architecture from Harvard.

Bec's work has been featured in The New York Times, Architectural Digest, Elle Décor, Case da Abitare, and Wallpaper magazines, among many others. Her limited edition designs have been shown at Patrick Parrish Gallery, and her work was featured in a 2018 exhibition organized by Istdibs' in Milan during the Salone del Mobile. Her clients include today's top architects and interior designers, and her work appears in commercial and residential projects around the world.





Private Residence — San Francisco

LIGHTING & MATERIALS

42 inches — Horizontal

Blackened Steel / Transparent Mirror

APPROX. MEASUREMENTS

L 42 in x W 18.5 in x H 21 in

L 107 cm x W 47 cm x H 53 cm



LIGHTING & MATERIALS

30 inches — Vertical

Blackened Steel / Transparent Mirror

APPROX. MEASUREMENTS

L 16 in x W 14 in x H 30 in

L 40 cm x W 35 cm x H 77 cm



LIGHTING & MATERIALS
24 inches – Horizontal
Brushed brass/Transparent mirror

APPROX. MEASUREMENTS
L 24 in x W 11 in x H 13 in
L 61 cm x W 28 cm x H 32 cm



Roll & Hill – New York

LIGHTING & MATERIALS
30 inches – Vertical
Oil-rubbed Bronze / Transparent Mirror

APPROX. MEASUREMENTS
L 16 in x W 14 in x H 30 in
L 40 cm x W 35 cm x H 77 cm

Mini Endless — Mini Farrago

by Jason Miller

Like Endless, Jason Miller's Mini collection originated with the idea of light fixture as architectural element, though its shape, scale, and construction are directly inspired by wooden ships' masts. Before advanced materials and industrial production, wooden sailing ships were the engineering marvels of their time. By necessity, the construction was as inventive as it was beautiful.



LIGHTING & MATERIALS

Pendant — 63 inches

Polished Brass

APPROX. MEASUREMENTS

Dia. 3 in x L 63 in

Dia. 8 cm x L 160 cm

Finishes — Hardware

- Blackened Brass
- Polished Brass
- Oil-Rubbed Bronze
- Polished Nickel

Finishes — Body

- Stained Oak
- Gray

Lamping 120V & 240V

Integrated LED

Canopy



A. Mini Endless Pendant

A. 6 x 18-inch / 15.2-cm x 45.7-cm rectangle in matching metal finish



B & C. Mini Endless Double Pendant

B. 5-inch / 12.7-cm round canopy in matching metal finish



C. 2-inch / 5-cm round hanging hardware in matching metal finish



D. Mini Farrago

D. 5-inch round / 12.7-cm in matching metal finish

Details

Materials

Acrylic, Brass, Wood, Steel

Suspension

Mini Endless: 96-inch / 244-cm cord and aircraft cable. Length can be adjusted on site.

Mini Farrago: 1/2-inch / 1.3-cm steel stem in matching metal finish.

35-inch / 89-cm length included with lamp.

96-inch / 244-cm length available for additional cost.

Stem length can be adjusted on site.

Dimmer Compatibility

Sconce, Pendant 120V, Mini Farrago 120V/240V: Triac, Electronic Low Voltage (ELV) or 0-10V

Sconce, Pendant 240V: Electronic Low Voltage (ELV) or 0-10V

Double Pendant 120V: Triac or Electronic Low Voltage (ELV)

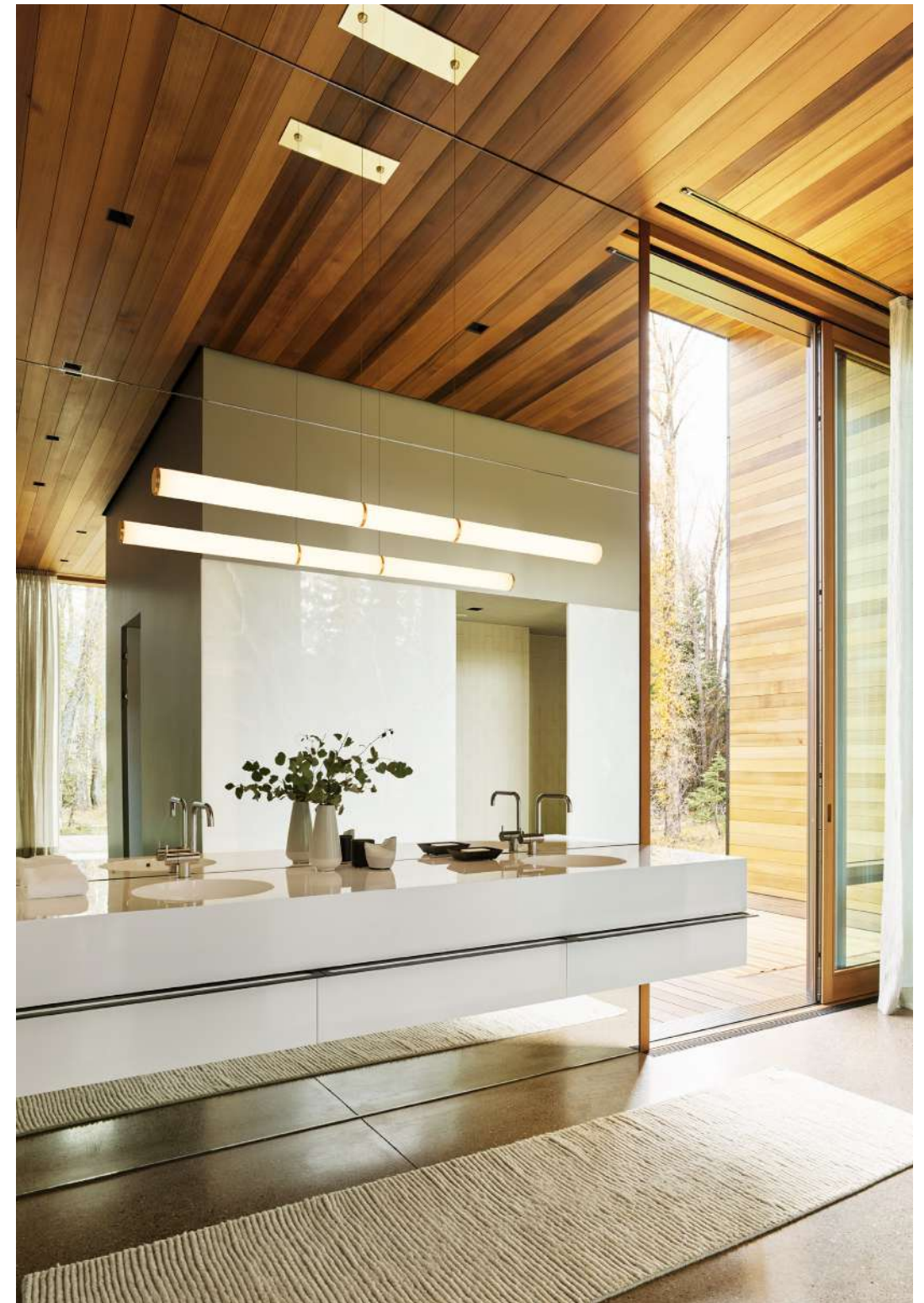
Double Pendant 240V: Electronic Low Voltage (ELV)

Year

2012

Designer

Jason Miller is a Brooklyn-based designer and the founder of Roll & Hill. Born in New York and raised in Darien, Connecticut, Jason's suburban upbringing heavily influenced his early, more conceptual pieces — duct-taped chairs and cracked vases, among them — and continues to inform the elegant, historically rich work that has become his signature. Jason received an MFA in painting and spent time in both the art and advertising worlds, but soon realized he preferred making things to documenting them. His designs — like a mirror whose photographic surface recalls a painted landscape — still often reflect those early preoccupations, but each is a functional object, with a kind of beauty and wit. Today, Jason runs both Jason Miller Studio and Roll & Hill from his headquarters in Sunset Park, Brooklyn.





LIGHTING & MATERIALS

Double Pendant — 89 inches / Polished Brass / Stained Oak
 Pendant — 63 inches / Polished Nickel

APPROX. MEASUREMENTS

L 89 in x W 3 in x H 6 in (Double Pendant)
 Dia. 3 in x L 63 in (Pendant)



LIGHTING & MATERIALS

Sconce
 Polished Nickel

APPROX. MEASUREMENTS

H 21.5 in x W 5 in x D 3.5 in
 H 55 cm x W 13 cm x D 9 cm



LIGHTING & MATERIALS

Pendant 02
Custom Finish

APPROX. MEASUREMENTS

L 51 in x W 49 in x H 22 in
L 130 cm x W 124 cm x H 55 cm



LIGHTING & MATERIALS

Custom Configuration
Brushed Brass / Stained Oak

APPROX. MEASUREMENTS

Detail

Modo

by Jason Miller

The Modo series was inspired by the kinds of ready-made, off-the-shelf parts that can be found at inexpensive lighting stores. Unlike those, however, Modo is painstakingly engineered and custom CNC-milled from solid aluminum. The spoke-and-hub system allows for dozens of configurations, making Modo as versatile as it is beautiful.



LIGHTING & MATERIALS

Chandelier — 4 Sided, 15 Globes

Black / Smoke

APPROX. MEASUREMENTS

L 39 in x W 39 in x H 32 in

L 100 cm x W 100 cm x H 81 cm

Finishes

- Black
- Bronze
- Brushed Brass
- Polished Nickel

Glass Colors

- Smoke
- Clear
- Cream

Canopy



A

A. 5-inch / 12.7-cm round in matching metal finish

Lamping



A. 120V

B. 240V

Smoke / Clear

A. 6-Watt LED, Half-Silver, G25 Globe, E26 Base

B. 6-Watt LED, Half-Silver, G25 Globe, E27 Base



C. 120V

D. 240V

Cream

C. 6-Watt LED, Frosted, A19 Shape, E26 Base

D. 6-Watt LED, Frosted, A19 Shape, E27 Base

Desk Lamp 120V & 240V

Integrated LED

Details

Materials

Machined Aluminum,
Glass

Suspension

1/2-inch / 1.3-cm aluminum stem in matching metal finish.
35-inch / 89-cm length included with lamp.
96-inch / 244-cm length available for additional cost.
Stem length can be adjusted on site.

Dimmer Compatibility

Triac or Electronic Low Voltage (ELV)
Table Lamp: Integrated dimmer on cord

Year

2009

Designer

Jason Miller is a Brooklyn-based designer and the founder of Roll & Hill. Born in New York and raised in Darien, Connecticut, Jason's suburban upbringing heavily influenced his early, more conceptual pieces — duct-taped chairs and cracked vases, among them — and continues to inform the elegant, historically rich work that has become his signature. Jason received an MFA in painting and spent time in both the art and advertising worlds, but soon realized he preferred making things to documenting them. His designs — like a mirror whose photographic surface recalls a painted landscape — still often reflect those early preoccupations, but each is a functional object, with a kind of beauty and wit. Today, Jason runs both Jason Miller Studio and Roll & Hill from his headquarters in Sunset Park, Brooklyn.





Private Residence — Uvita

LIGHTING & MATERIALS

Desk Lamp
Polished Nickel / Cream

APPROX. MEASUREMENTS

H 17 in x W 11 in x D 8.5 in
H 43 cm x W 28 cm x D 21 cm



Private Residence — Miami

LIGHTING & MATERIALS

Chandelier — Diamond, 13 Globes
Brushed Brass / Smoke

APPROX. MEASUREMENTS

L 58 in x W 32 in x H 26 in
L 147 cm x W 81 cm x H 66 cm



Private Residence — Palm Beach

LIGHTING & MATERIALS
 Chandelier — 4 Sided, 15 Globes
 Brushed Brass / Cream

APPROX. MEASUREMENTS
 L 39 in x W 39 in x H 32 in
 L 100 cm x W 100 cm x H 81 cm



De La Espada showcase — Lisbon

LIGHTING & MATERIALS
 Chandelier — 3 Sided, 10 Globes
 Black / Smoke

APPROX. MEASUREMENTS
 L 42 in x W 37 in x H 19 in
 L 106 cm x W 94 cm x H 48 cm



LIGHTING & MATERIALS
Sconce — 2 Globes
Bronze / Cream

APPROX. MEASUREMENTS
H 21 in x W 6.5 in x D 7.5 in
H 53 cm x W 16 cm x D 19 cm



LIGHTING & MATERIALS
Sconce — 3 Globes
Black / Clear

APPROX. MEASUREMENTS
H 18 in x W 6.5 in x D 10 in
H 46 cm x W 16 cm x D 25 cm



LIGHTING & MATERIALS
Desk Lamp
Brushed Brass / Smoke

APPROX. MEASUREMENTS
H 17 in x W 11 in x D 8.5 in
H 43 cm x W 28 cm x D 21 cm



LIGHTING & MATERIALS
Ceiling Mount — 5 Globes
Black / Smoke

APPROX. MEASUREMENTS
L 16 in x W 16 in x H 12 in
L 16 in x W 16 in x H 12 in



LIGHTING & MATERIALS

Modo Stack
Black / Smoke

APPROX. MEASUREMENTS

Custom Configuration



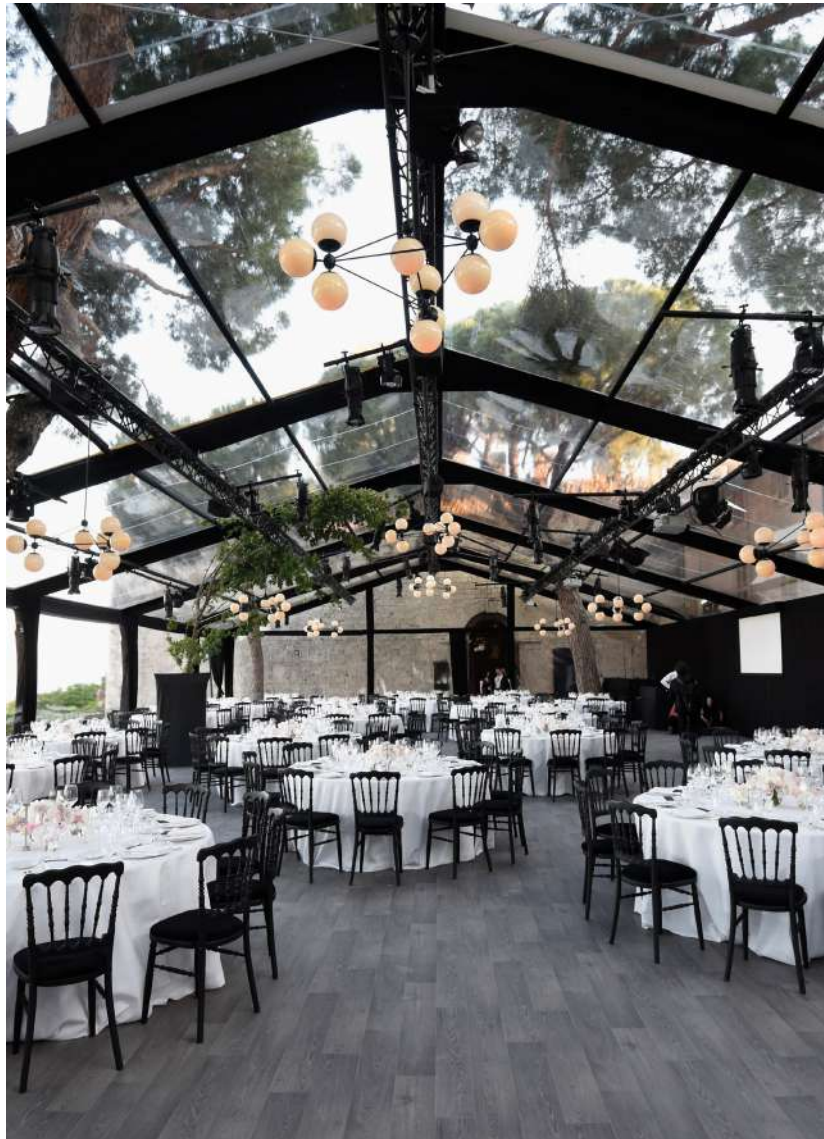
Private Residence — New York

LIGHTING & MATERIALS

Ceiling Mount — 5 Globes (2)
Black / Smoke

APPROX. MEASUREMENTS

L 16 in x W 16 in x H 12 in
L 41 cm x W 41 cm x H 30 cm



Cannes Film Festival – Cannes

LIGHTING & MATERIALS

Chandelier – 3 Sided, 10 Globes (9)
Black / Cream

APPROX. MEASUREMENTS

L 42 in x W 37 in x H 19 in
L 106 cm x W 94 cm x H 48 cm



LIGHTING & MATERIALS

Pendant – 2 Globes
Black / Cream

APPROX. MEASUREMENTS

L 56 in x W 6.5 in x H 14 in
L 142 cm x W 17 cm x H 36 cm

Moonrise

by Lara Bohinc

Moonrise is inspired by the lunar phases, with round and half round shapes composed in playful compositions that shift from every angle like the Moon's changing shapes throughout its cycle.



LIGHTING & MATERIALS

Chandelier

Brushed Brass

APPROX. MEASUREMENTS

L 35.1 in x W 35.1 in x H 25.3 in

L 89.3 cm x W 89.3 cm x H 64.3 cm

Finishes

- Matte Black
- Brushed Brass

Canopy



A

A. 5-inch / 12.7-cm round in matching metal finish

Details

Materials

Acrylic, Steel, Aluminum

Suspension

1/2-inch / 1.3-cm steel stem in matching metal finish.
35-inch / 89-cm length included with lamp.
96-inch / 244-cm length available for additional cost.
Stem length can be adjusted on site.

Dimmer Compatibility

120V: Triac, Electronic Low Voltage (ELV) or 0-10V
240V: Electronic Low Voltage (ELV) or 0-10V

Year

2021

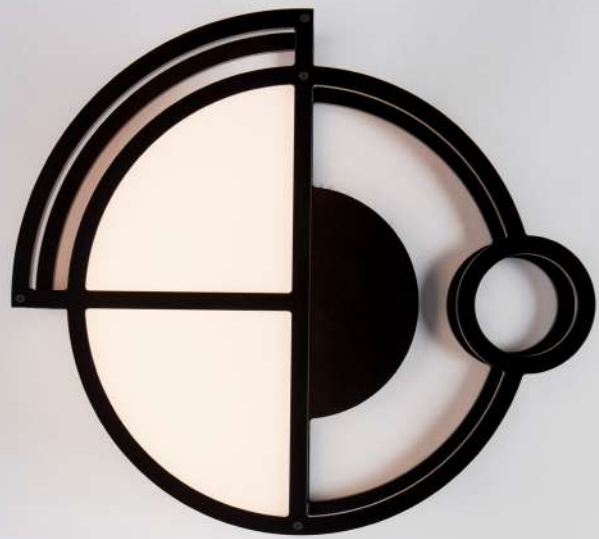
Designer

Lara Bohinc MBE studied Industrial Design at the Ljubljana Academy of Fine Arts, followed by MA Metalwork and Jewelry at Royal College of Art London. After graduation, she won British Fashion Council's New Generation Award and launched her own studio. She was design consultant for many luxury brands, amongst them Montblanc, Gucci and most notably Cartier, a position she held for over a decade. A mark of her work is versatility. A passionate believer in the universality of good design, she always looks to bridge the divide across different mediums of furniture, objects, jewelry, and textiles. Bohinc's ability to create work with iconic beauty is rooted in her familiarity with materials and manufacturing approaches. While retaining a deep respect for the traditional principles of her craft, she has also drawn on her knowledge of industrial techniques, fusing modernity of style with function, to achieve a contemporary elegance. The same principles apply in all of her designs—use of the finest materials, and an obsession with deconstruction and reconfiguration of pure geometric form. Overall, Bohinc's signature style is a mix of contradictions: bold yet light, graphic yet fluid, angular yet feminine.

Lamping 120V & 240V

Integrated LED





LIGHTING & MATERIALS

Sconce 01
Matte Black

APPROX. MEASUREMENTS

L 4 in x W 12.1 in x H 10.8 in
L 10.16 cm x W 30.7 cm x H 27.5 cm



LIGHTING & MATERIALS

Sconce 02
Matte Black

APPROX. MEASUREMENTS

L 4 in x W 13.6 in x H 19.3 in
L 10.16 cm x W 34.5 cm x H 49 cm



LIGHTING & MATERIALS

Chandelier
Brushed Brass

APPROX. MEASUREMENTS

Detail



LIGHTING & MATERIALS

Sconce 02
Brushed Brass

APPROX. MEASUREMENTS

L 4 in x W 13.6 in x H 19.3 in
L 10.16 cm x W 34.5 cm x H 49 cm



LIGHTING & MATERIALS

Chandelier
Matte Black

APPROX. MEASUREMENTS

L 35.1 in x W 35.1 in x H 25.3 in
L 89.3 cm x W 89.3 cm x H 64.3 cm



LIGHTING & MATERIALS

Sconce 01
Brushed Brass

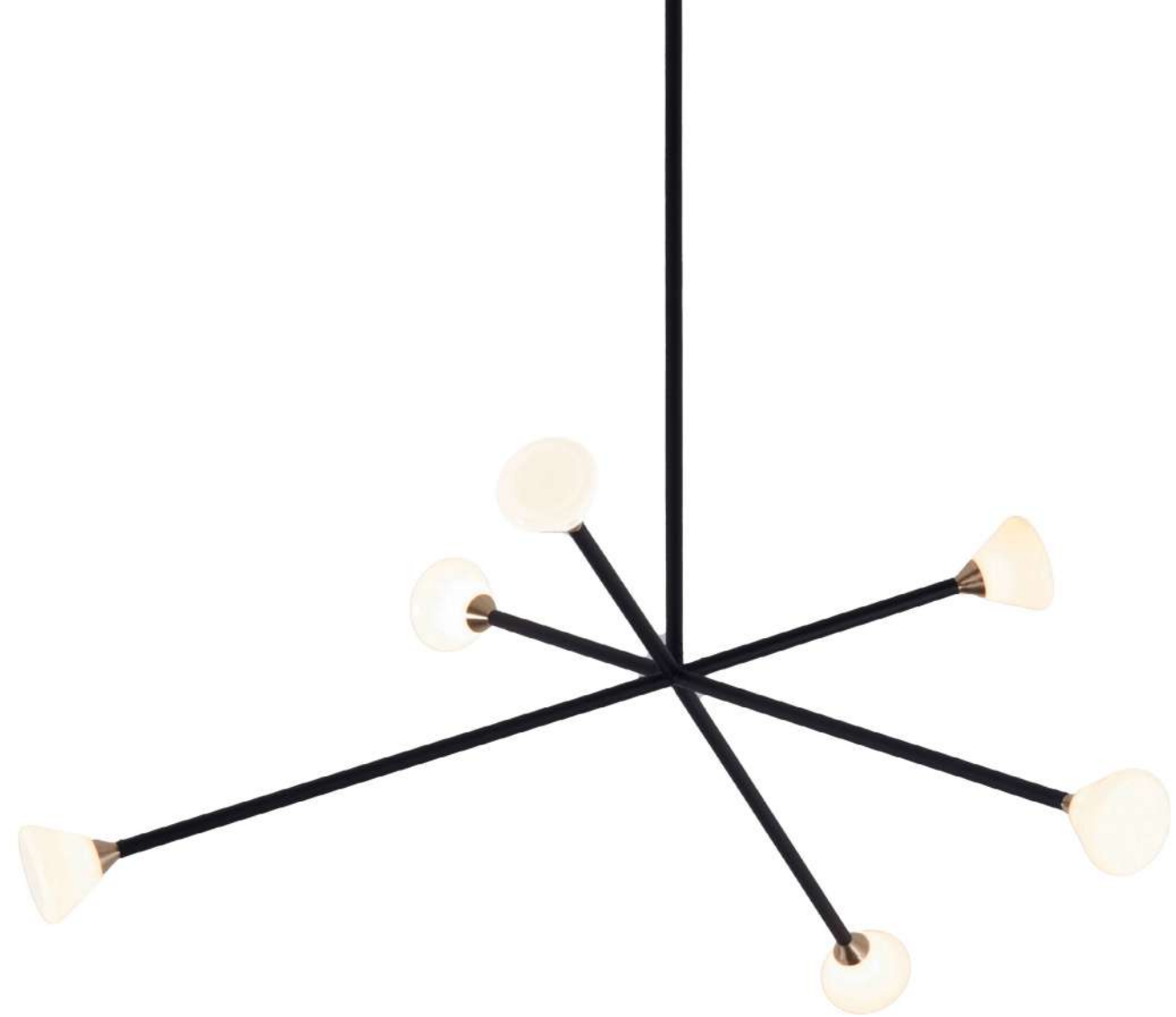
APPROX. MEASUREMENTS

L 4 in x W 12.1 in x H 10.8 in
L 10.16 cm x W 30.7 cm x H 27.5 cm

Nova

by McKenzie & Keim

The Nova Chandelier is a centerpiece fixture with an elegant and energetic composition. This contemporary chandelier branches out from a central point in a pure, geometric manner. It features hand-blown opal glass shades that house powerful, dimmable LEDs.



LIGHTING & MATERIALS

Chandelier – 6 Lights

Matte Black / Brushed Brass

APPROX. MEASUREMENTS

L 33 in x W 29 in x D 12.5 in

L 84 cm x W 74 cm x D 32 cm

Finishes - Armature

- Matte Black
- Matte Ivory
- Brushed Brass

Finishes - Fittings

- Brushed Brass

Canopy



A

A. 5-inch / 12.7-cm round in matching metal finish

Lamping 120V & 240V

Integrated LED

Details

Materials

Brass, Aluminum, Glass

Suspension

1/2-inch brass stems (2) in matching metal finish. 35-inch length included with lamp. 96-inch length available for additional cost. Length can be adjusted on site.

Dimmer Compatibility

Triac or Electronic Low Voltage (ELV)

Year

2019

Designer

Taylor McKenzie-Veal and Brendan Keim started their eponymous studio to bring their designs to life and into people's homes. After years of pursuing their own careers, they joined forces, fusing their knowledge of materials, production, technology and design into one studio. McKenzie & Keim was born in 2016, and operates today from their location in the Logan Square neighborhood of Chicago, Illinois.





Roll & Hill — New York

LIGHTING & MATERIALS

Chandelier — 9 Lights
Custom Finish

APPROX. MEASUREMENTS

L 45 in x W 40 in x H 14 in
L 114 cm x W 102 cm x H 36 cm



LIGHTING & MATERIALS

Chandelier — 9 Lights
Matte Black / Brushed Brass

APPROX. MEASUREMENTS

L 45 in x W 40 in x H 14 in
L 114 cm x W 102 cm x H 36 cm



LIGHTING & MATERIALS
Chandelier – 6 Lights
Matte Black / Brushed Brass

APPROX. MEASUREMENTS
L 33 in x W 29 in x H 12.5 in
L 84 cm x W 74 cm x H 32 cm



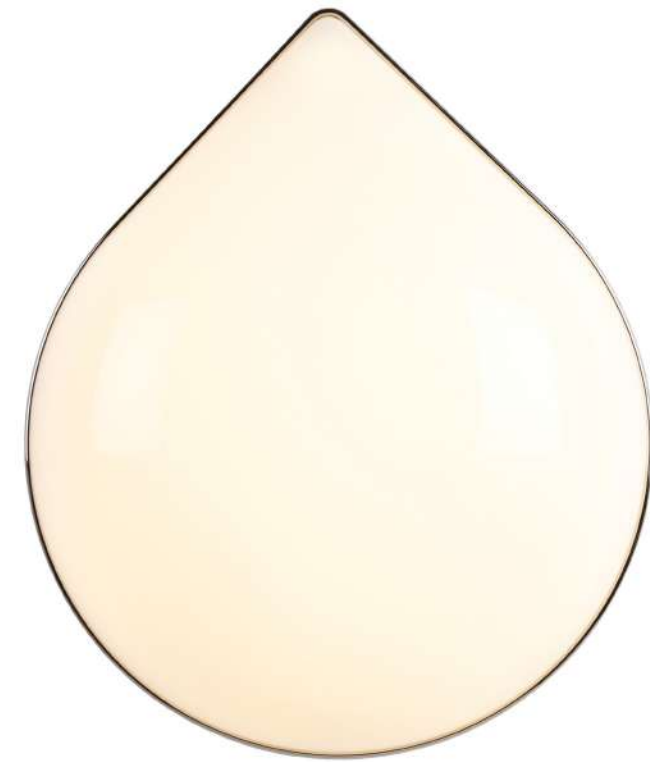
LIGHTING & MATERIALS
Chandelier – 9 Lights
Matte Black / Brushed Brass

APPROX. MEASUREMENTS
Detail

Odds & Ends

by Jason Miller

Odds & Ends is a series of wall lights designed in three basic shapes: Teardrop, Rainbow and Aquafresh — so named because it resembles a dab of toothpaste. The series, which is illuminated by LEDs, can be installed in multiples to create large installations of varying designs.



LIGHTING & MATERIALS

Teardrop

Polished Nickel

APPROX. MEASUREMENTS

H 16 in x W 13.5 in x D 4 in

H 41 cm x W 34 cm x D 10 cm

Finishes

● Polished Nickel

● Polished Brass

Lamping 120V & 240V

Integrated LED

Details

Materials

Acrylic, Steel

Dimmer Compatibility

Triac, Electronic Low Voltage (ELV) or 0-10V

Year

2011

Designer

Jason Miller is a Brooklyn-based designer and the founder of Roll & Hill. Born in New York and raised in Darien, Connecticut, Jason's suburban upbringing heavily influenced his early, more conceptual pieces — duct-taped chairs and cracked vases, among them — and continues to inform the elegant, historically rich work that has become his signature. Jason received an MFA in painting and spent time in both the art and advertising worlds, but soon realized he preferred making things to documenting them. His designs — like a mirror whose photographic surface recalls a painted landscape — still often reflect those early preoccupations, but each is a functional object, with a kind of beauty and wit. Today, Jason runs both Jason Miller Studio and Roll & Hill from his headquarters in Sunset Park, Brooklyn.





Holiday House 2014 – New York

LIGHTING & MATERIALS

Rainbow
Polished Nickel

APPROX. MEASUREMENTS

H 7 in x W 13.5 in x D 4 in
H 18 cm x W 34 cm x D 10 cm



Gateaux Thoumieux – Paris

LIGHTING & MATERIALS

Teardrop
Polished Brass (4)

APPROX. MEASUREMENTS

H 16 in x W 13.5 in x D 4 in
H 41 cm x W 35 cm x D 10 cm



LIGHTING & MATERIALS

Aquafresh
Polished Nickel

APPROX. MEASUREMENTS

H 20 in x W 7 in x D 4 in
H 51 cm x W 18 cm x D 10 cm



LIGHTING & MATERIALS

Rainbow
Polished Brass

APPROX. MEASUREMENTS

H 7 in x W 13.5 in x D 4 in
H 18 cm x W 34 cm x D 10 cm

Pole

by Philippe Malouin

Rigid yet flexible, Pole's aluminum construction and modular design allows it to create giant curves. Rather than uplighting or area lighting, Pole illuminates a broad range of space in multiple configurations along walls, floors, and ceilings.

LIGHTING & MATERIALS

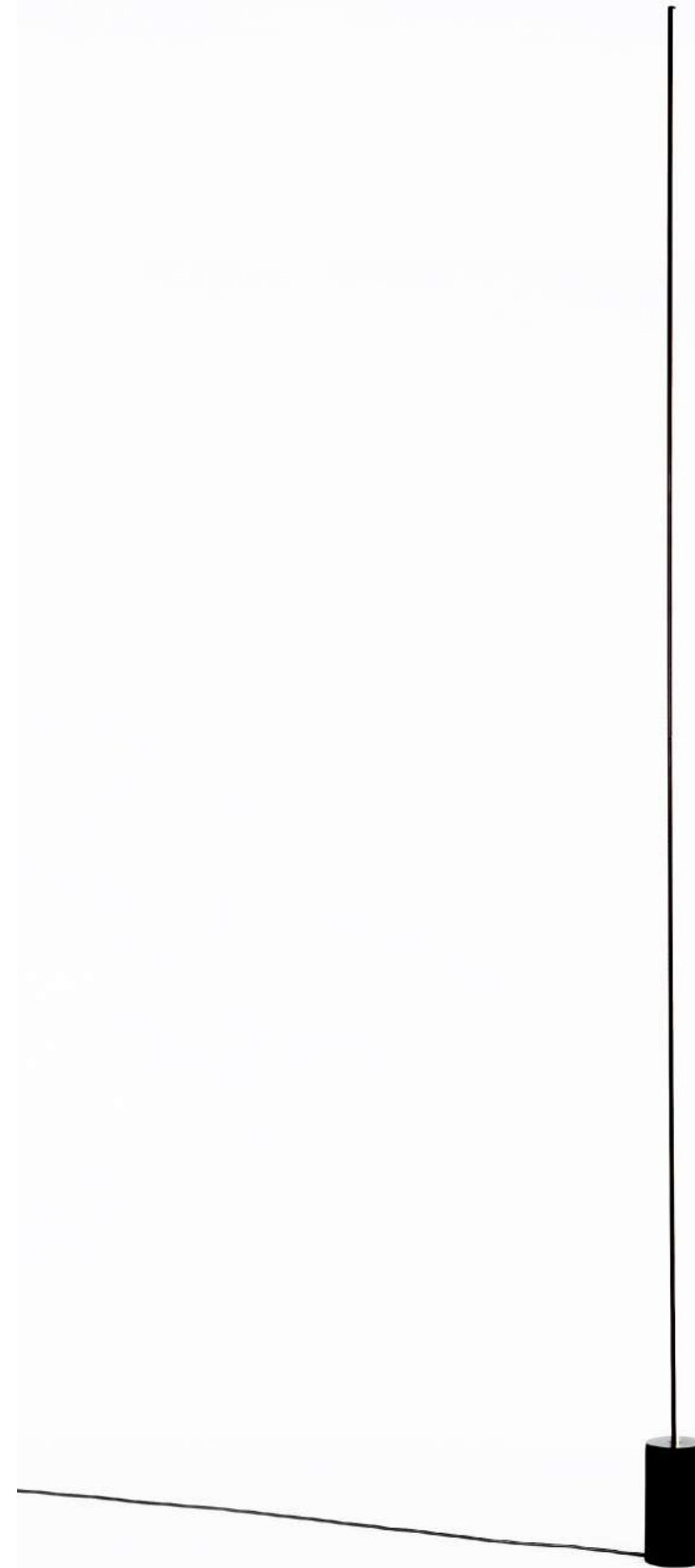
01 Floor — 2 Sections

Black

APPROX. MEASUREMENTS

L 4.1 in x W 4.1 in x H 100 in

L 10.5 cm x W 10.5 cm x H 254 cm



Finishes

- Black

Canopy



- A. 5.1-inch / 13-cm round in matching metal finish (Large)
- B. 4.1-inch / 10.5-cm round in matching metal finish (Small)
- C. 1.8-inch / 4.5-cm round in matching metal finish (Mini)

Details

Materials

Aluminum, Steel, Silicone

Standard Configurations

- 01 Floor - 2 Sections
- 02 Floor to Floor - 4-8 Sections
- 03 Ceiling to Ceiling - 4-8 Sections
- 04 Floor to Surface - 3-8 Sections
- 05 Surface to Surface - 3-8

Floor Bases

- D 5.1 x H 9.9-inch / D 13 x H 25.1-cm (Large)
- D 4.1 x H 8.1-inch / D 10.5 x H 20.6-cm (Small)

Dimmer Capabilities

Triac, Electronic Low Voltage (ELV) or 0-10V

Year

2019

Designer

British-Canadian Philippe Malouin holds a bachelor's degree in Design from the Design Academy Eindhoven. He has also studied at the École Nationale Supérieure de Création Industrielle in Paris and University of Montreal. He set up his studio in 2008 after working for English designer Tom Dixon. Philippe also taught at the Royal College of Art in London between 2012-2015. He is the director of architectural and interiors design practice POST-OFFICE.

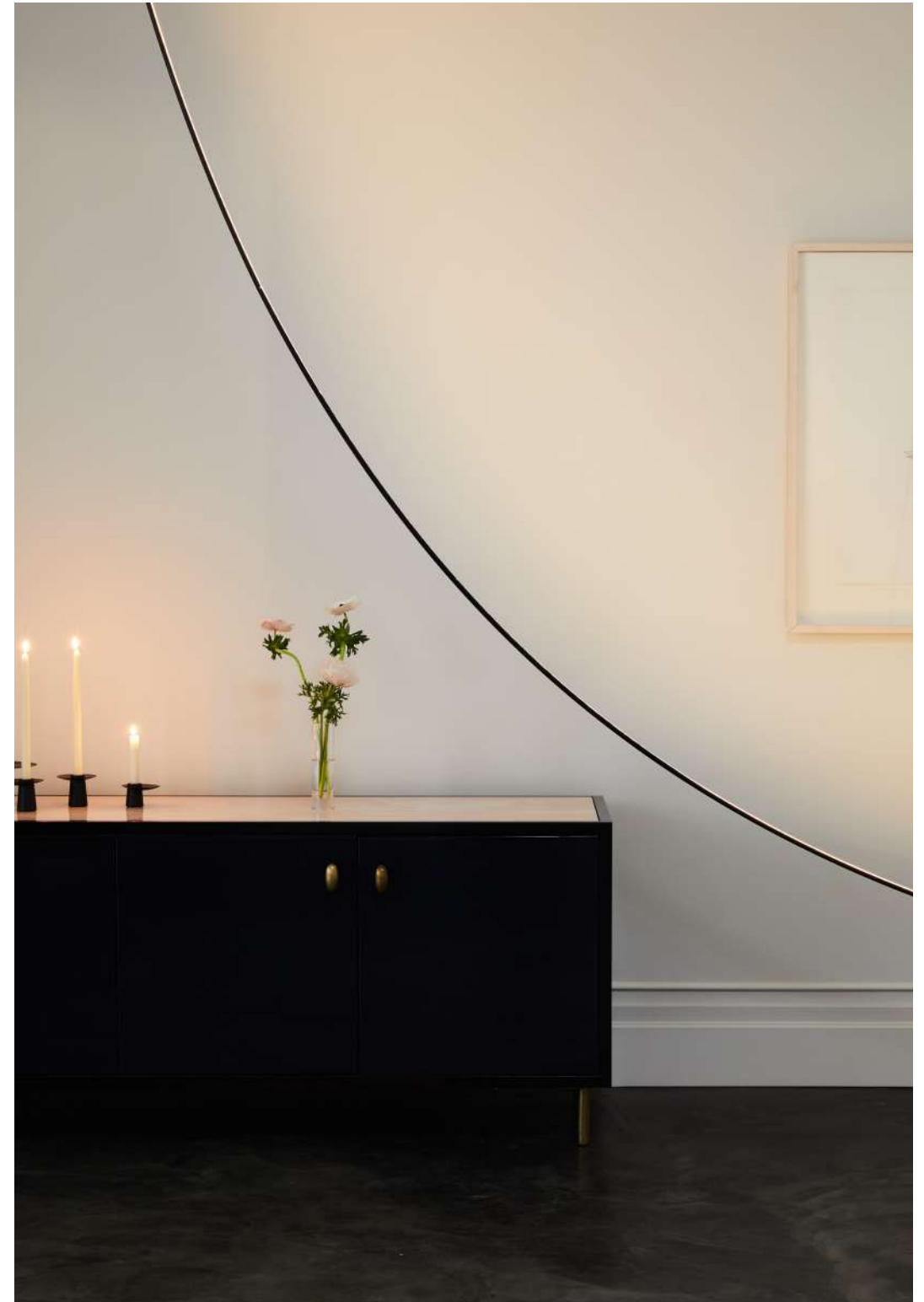
His diverse portfolio includes tables, rugs, chairs, lights, art objects and installations. Recently, Philippe won the Wallpaper* Magazine 'Designer of the Year' award. Philippe lives and works in London.

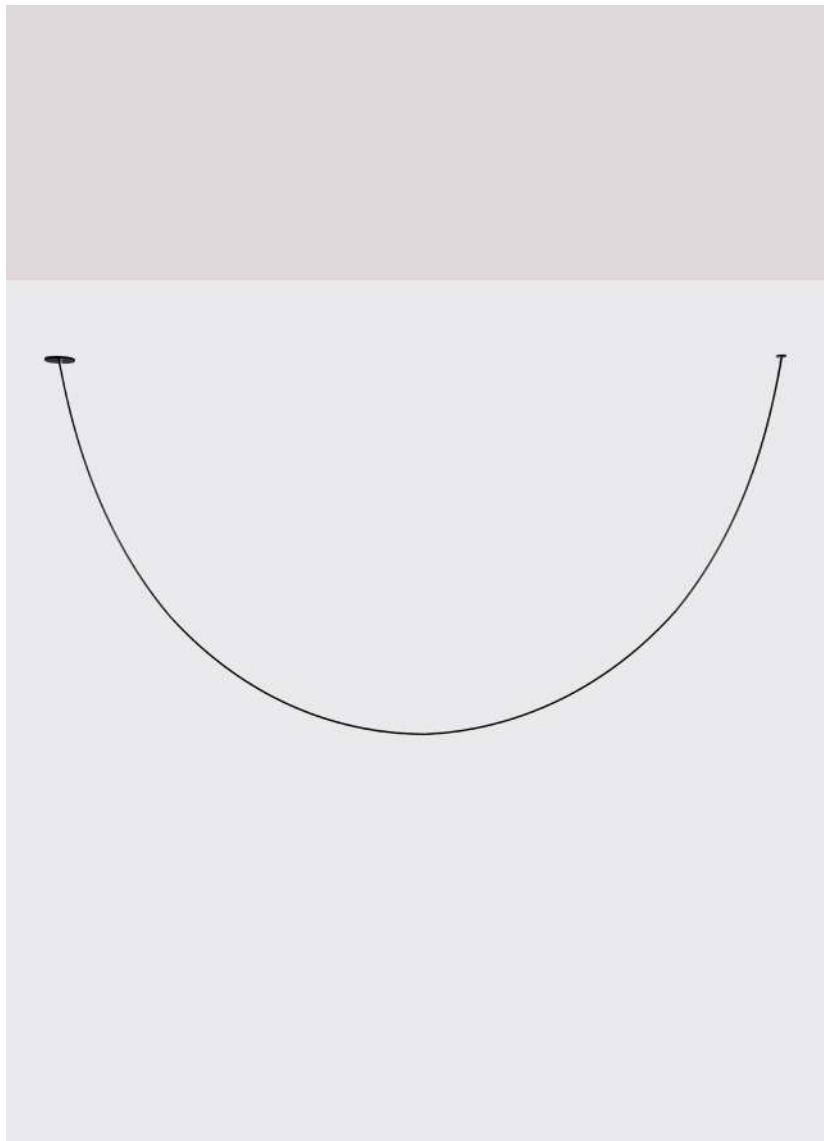
Features

Flexible and modular design
Customizable length and installation along walls, floors, and ceiling

Lamping 120V & 240V

Integrated LED





LIGHTING & MATERIALS
03 Ceiling to Ceiling — 4 Sections
Black

APPROX. MEASUREMENTS
L 97 in x W 5 in x H 67 in
L 246 cm x W 13 cm x H 170 cm



LIGHTING & MATERIALS
05 Ceiling to Wall — 3 Sections
Black

APPROX. MEASUREMENTS
L 87 in x W 5 in x H 94 in
L 221 cm x W 13 cm x H 239 cm



Roll & Hill — New York

LIGHTING & MATERIALS
 03 Ceiling to Wall — 4 Sections
 Black

APPROX. MEASUREMENTS
 L 87 in x W 5 in x H 85 in
 L 221 cm x W 13 cm x H 216



Roll & Hill — New York

LIGHTING & MATERIALS
 Multiple Custom Configurations
 Black

APPROX. MEASUREMENTS
 Custom Configuration



LIGHTING & MATERIALS
02 Floor to Floor – 4 Sections
Black

APPROX. MEASUREMENTS
L 97 in x W 5 in x H 76 in
L 246 cm x W 13 cm x H 193 cm



Roll & Hill – New York

LIGHTING & MATERIALS
Multiple Custom Configurations
Black

APPROX. MEASUREMENTS
Custom Configuration

Rudi

by Lukas Peet

Rudi, a series of minimalistic pendant lamps, is named after Lukas Peet's father, a jeweler. The lamps are made from bent metal tubes that seamlessly merge with thin handmade cold-cathode lights. Contrasting with the sleek metal, the fixtures hang from hand-knotted cords.



LIGHTING & MATERIALS

Loop 02

Satin Brass

APPROX. MEASUREMENTS

H 36 in x W 11 in x D 1 in

H 92 cm x W 28 cm x D 3 cm

Finishes

● Satin Brass

Canopy



A

A. 9-inch / 22.9-cm round in matching metal finish" to "5-inch / 12.7-cm round in matching metal finish

Details

Materials
Steel, Glass

Lamping 120V & 240V

Integrated LED

Suspension
96-inch / 244-cm cord.
Length can be adjusted on site.

Dimmer Compatibility
120V: Triac, Electronic Low Voltage (ELV) or 0-10V
240V: Electronic Low Voltage (ELV) or 0-10V

Year

2011

Designer

Lukas Peet left his native Vancouver in 2005 to attend the prestigious industrial design program at the Design Academy Eindhoven in the Netherlands. After graduating at the top of his class in 2009, Lukas returned to Canada and founded Lukas/Peet Design, which is active in the fields of product design, interior design, graphic design and public space. His work has been published and exhibited internationally, including his first solo exhibition recently at the Design Exchange in Toronto. Lukas received the inaugural RBC Emerging Designer Award in 2014. He lives and works in Vancouver.





Private Residence — Paris

LIGHTING & MATERIALS

Loop 01 / Satin Brass
Loop 02 / Satin Brass (2)

APPROX. MEASUREMENTS

H 35 in x W 7 in x D 1 in (Loop 01)
H 35 in x W 11 in x D 1 in (Loop 02)



LIGHTING & MATERIALS

Loop 03
Satin Brass

APPROX. MEASUREMENTS

H 26 in x W 7 in x D 1 in
H 66 cm x W 18 cm x D 3 cm



Private Residence – Miami

LIGHTING & MATERIALS

Loop 02 (6)
Satin Brass

APPROX. MEASUREMENTS

H 35 in x W 11 in x D 1 in
H 89 cm x W 28 cm x D 3 cm



LIGHTING & MATERIALS

Double Loop
Satin Brass

APPROX. MEASUREMENTS

H 36 in x W 7 in x D 11 in
H 92 cm x W 18 cm x D 28 cm

Shape Up

by Ladies & Gentlemen Studio

Shape Up is a versatile lighting series that celebrates bold geometric shapes. The playful juxtapositions upend traditional notions of symmetry in favor of a dynamic spatial harmony. The modular system allows the shapes to be suspended and composed in response to a space's architecture and function, its shades discreetly networked via connecting cords and hubs.



LIGHTING & MATERIALS

3-Piece Chandelier

Brushed Brass

APPROX. MEASUREMENTS

Dimensions Variable

Finishes — Metal Shade

- Blackened Steel
- Brushed Brass
- Brushed Copper

Colors — Glass Shade

- Globe: Gray Fog
- Arc: Caledon
- Cylinder: Midnight

Colors — Cord

- Currant
- Black

Canopy



A B

- A. 5-inch / 12.7-cm round in brushed brass
- B. 5-inch / 12.7-cm round in brushed brass

Hanging Hardware



A

- A. 2 1/2-inch / 6.4-cm vertical round in brushed brass

Lamping 120V & 240V



A B

- A. 3-Watt LED, Clear, G9 Base
- B. 3-Watt LED, Clear, G9 Base

Details

Materials
Aluminum, Brass,
Steel, Glass

Suspension
Pendant: 12-foot cord. Length can be adjusted on site.
Chandelier: 6-foot Cord. Length can be adjusted on site.

Dimmer Compatibility
Triac or Electronic Low Voltage (ELV)

Year

2014

Designer

Ladies & Gentlemen Studio is a Brooklyn-based design studio with a diverse focus. Founded by Dylan Davis & Jean Lee in 2010, L&G Studio's playful explorations in materiality blend their resourceful curiosity with the desire to find unexpected pairings of material and function. The results possess an expressive yet refined purity, and range from jewelry to home furnishings. Their open, multidisciplinary approach to design yields an ever-evolving set of ideas collected from their daily experiments and discoveries.



5-Piece Chandelier, Brushed Brass / Brushed Copper



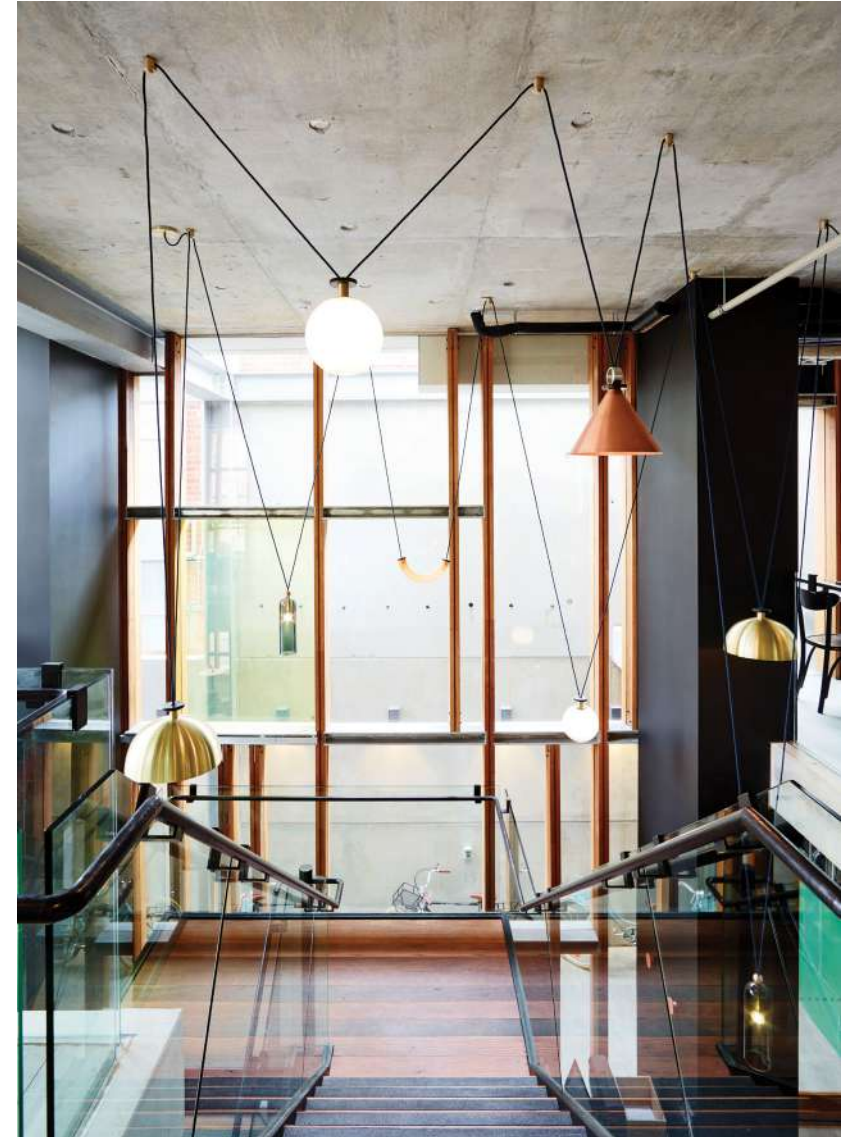
Private Residence – London

LIGHTING & MATERIALS

Pendant – Cone
Blackened Steel

APPROX. MEASUREMENTS

Dimensions Variable



Alex Hotel – Perth

LIGHTING & MATERIALS

Custom Configuration

APPROX. MEASUREMENTS

Dimensions Variable



LIGHTING & MATERIALS

Pendant — Cylinder
Midnight

APPROX. MEASUREMENTS

Dimensions Variable



LIGHTING & MATERIALS

Pendant — Globe
Gray Fog

APPROX. MEASUREMENTS

Detail



LIGHTING & MATERIALS

Double Pendant
Brushed Copper

APPROX. MEASUREMENTS

Dimensions Variable



LIGHTING & MATERIALS

3-Piece Chandelier
Blackened Steel

APPROX. MEASUREMENTS

Dimensions Variable



Private Residence – Cassis

LIGHTING & MATERIALS
 5-Piece Chandelier
 Brushed Copper / Brushed Brass

APPROX. MEASUREMENTS
 Dimensions Variable



LIGHTING & MATERIALS
 Pendant – Globe
 Gray Fog

APPROX. MEASUREMENTS
 Dimensions Variable



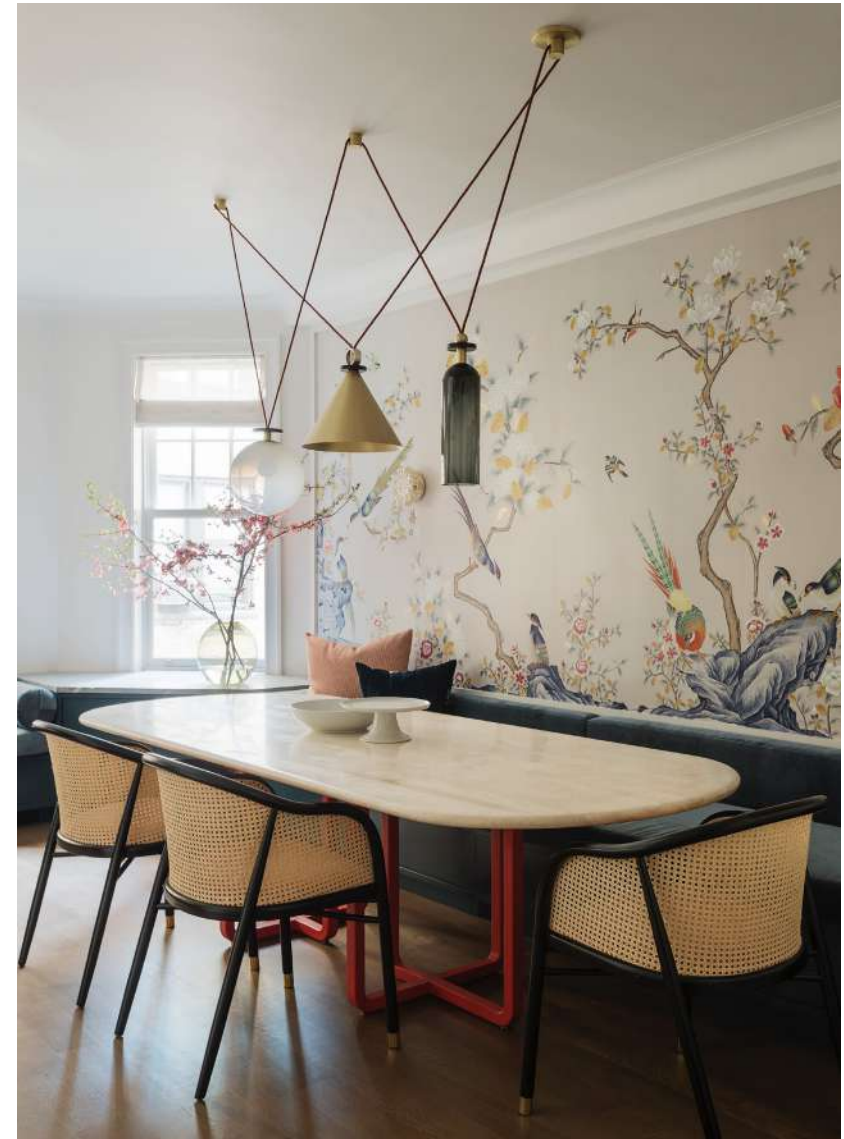
Private Residence — New York

LIGHTING & MATERIALS

Custom Double Pendant
Blackened Steel

APPROX. MEASUREMENTS

Dimensions Variable



Private Residence — New York

LIGHTING & MATERIALS

3-Piece Chandelier
Brushed Brass

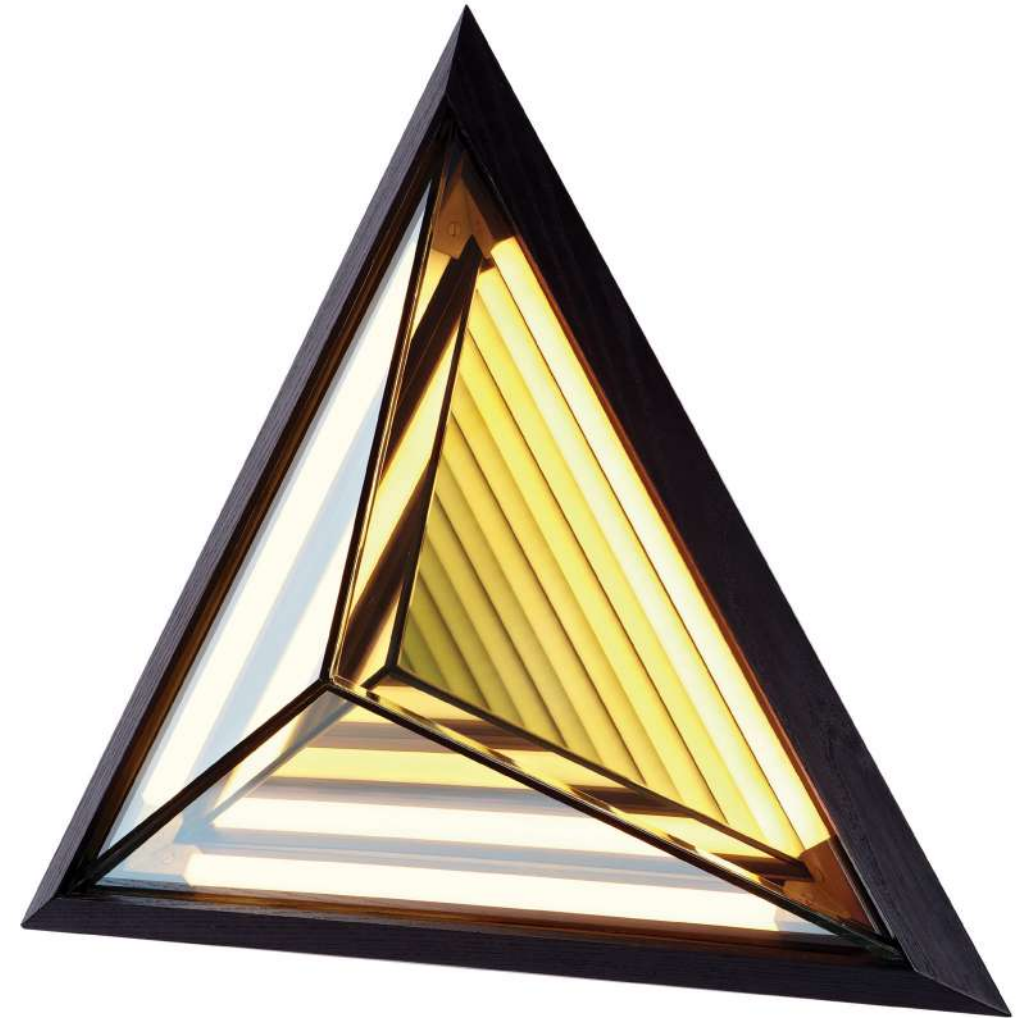
APPROX. MEASUREMENTS

Dimensions Variable

Stella

by Rosie Li

Inspired by his early work, this sconce is named after the painter Frank Stella. When illuminated, its half-mirrored glass diffuser reveals a series of nested geometric shapes. Stella creates the impression of infinite volume within a finite space.



LIGHTING & MATERIALS

Triangle

APPROX. MEASUREMENTS

H 19.5 in x W 17 in x D 6.5 in

H 50 cm x W 43 cm x D 17 cm

Finish — Wood

● Black

Lamping 120V & 240V

Integrated LED

Details

Materials

Mirrored Glass,
Brass, Steel, Wood

Dimmer Compatibility

Triac, Electronic Low Voltage (ELV) or
0-10V

Year

2012

Designer

Rosie Li is a Chinese-born American designer focusing on sculptural lighting. Lifelong interests of drawing and sculpture led her to attend Rhode Island School of Design, where Li graduated in 2011 with a BFA in Furniture Design. Shortly after graduating, she launched her design career by partnering with Roll & Hill to produce 'Stella' — a series of Op Art-inspired mirror sconces.

Li's love for lighting design eventually grew into her eponymous lighting atelier, where she blends geometric forms with organic elements. Her works challenge visual perception and blur the lines between product and sculpture. Rosie Li currently lives and works in Brooklyn, NY.





The Maison de Luxe Designer Show House 2015 — Los Angeles

LIGHTING & MATERIALS
Custom Configuration

APPROX. MEASUREMENTS
Custom Configuration



LIGHTING & MATERIALS
Triangle

APPROX. MEASUREMENTS
Detail

Superordinate Antlers

by Jason Miller

The Superordinate Antler Collection, designed in 2003, was influential in breaking the rigidness of contemporary modernism and initiating the back-to-nature movement in design. The natural environment offers such a breadth of beautiful forms, why not bring it indoors? The Antlers are nature, made better.



LIGHTING & MATERIALS

Chandelier – 12 Antlers

White

APPROX. MEASUREMENTS

Dia. 44 in x H 21 in

Dia. 111 cm x H 53 cm

Finishes

○ White

● Chrome

● Gold

Canopy



A

A. 5-inch / 12.7-cm round in white

Lamping



A. 120V



B. 240V

Chandeliers

A. 1.5-Watt LED, Frosted, CA8 Flame Tip Shape, E12 Base

B. 1.5-Watt LED, Frosted, CA8 Flame Tip Shape, E14 Base



A. 120V



B. 240V

Table Lamp, Sconce

A. 3-Watt LED, Clear, T6.5 Tube, E12 Base

B. 3-Watt LED, Clear, T6.5 Tube, E14 Base

Details

Materials

Ceramic

Suspension

96-inch / 244-cm cord and aircraft cable.

Length can be adjusted on site.

Dimmer Compatibility

120V: Triac, Electronic Low Voltage (ELV) or 0-10V

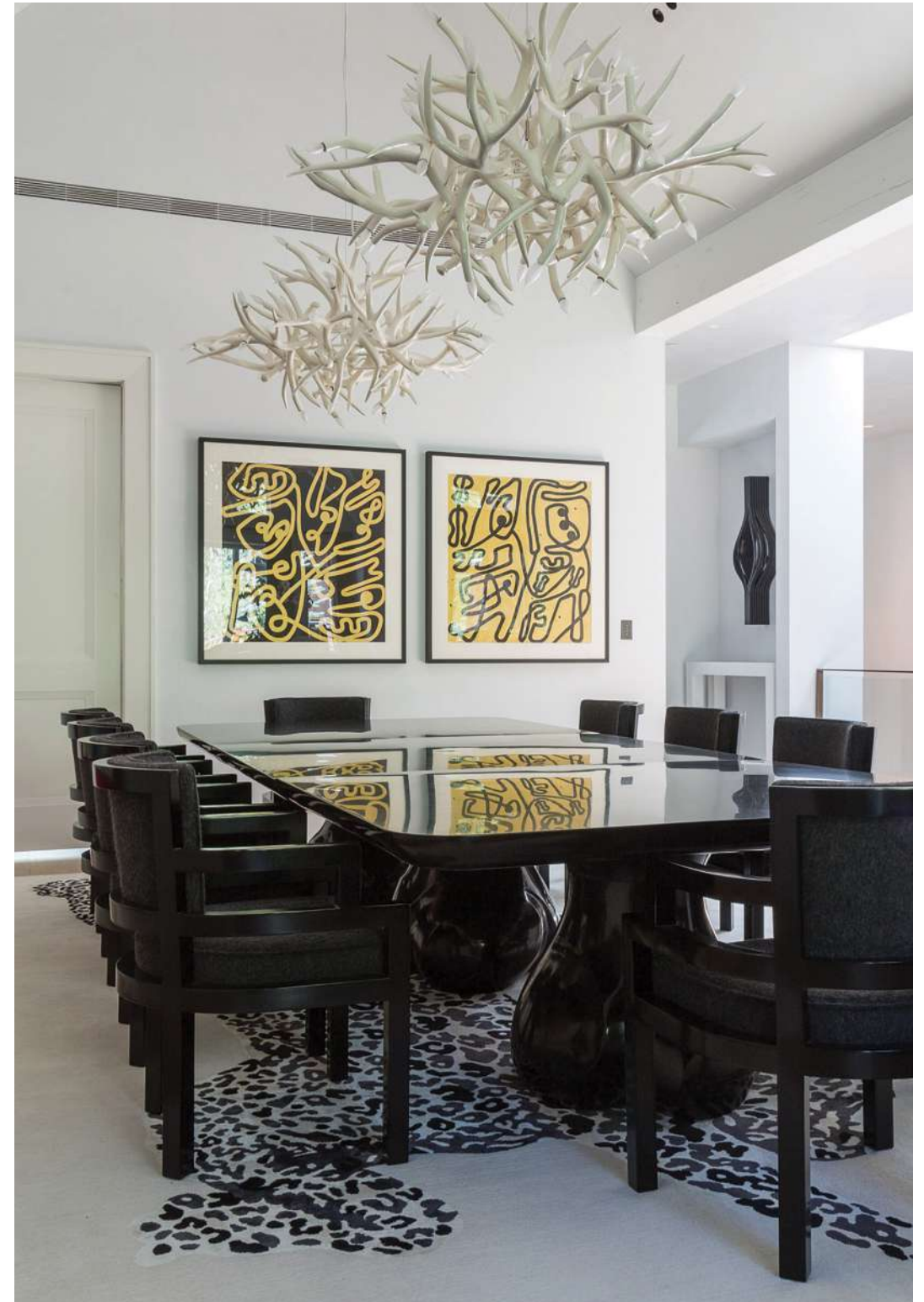
240V: Electronic Low Voltage (ELV) or 0-10V

Year

2003

Designer

Jason Miller is a Brooklyn-based designer and the founder of Roll & Hill. Born in New York and raised in Darien, Connecticut, Jason's suburban upbringing heavily influenced his early, more conceptual pieces — duct-taped chairs and cracked vases, among them — and continues to inform the elegant, historically rich work that has become his signature. Jason received an MFA in painting and spent time in both the art and advertising worlds, but soon realized he preferred making things to documenting them. His designs — like a mirror whose photographic surface recalls a painted landscape — still often reflect those early preoccupations, but each is a functional object, with a kind of beauty and wit. Today, Jason runs both Jason Miller Studio and Roll & Hill from his headquarters in Sunset Park, Brooklyn.





LIGHTING & MATERIALS

Sconce
Chrome

APPROX. MEASUREMENTS

H 20 in x W 17 in x D 10 in
H 51 cm x W 44 cm x D 26 cm



LIGHTING & MATERIALS

Chandelier – 4 Antlers
White

APPROX. MEASUREMENTS

Dia. 21 in x H 30 in
Dia. 53 cm x H 76 cm



LIGHTING & MATERIALS

Chandelier – 24 Antlers
Gold

APPROX. MEASUREMENTS

Dia. 51.5 in x H 35 in
Dia. 131 cm x H 89 cm



LIGHTING & MATERIALS

Chandelier – 27 Antler Ring
White

APPROX. MEASUREMENTS

Dia. 54 in x H 11 in
Dia. 137 cm x H 27 cm



Private Residence – Seattle

LIGHTING & MATERIALS

Chandelier – 10 Antlers
White

APPROX. MEASUREMENTS

D 34.5 in x H 18 in
D 87 cm x H 46 cm



Private Residence – San Francisco

LIGHTING & MATERIALS

Chandelier – 6 Antlers
White

APPROX. MEASUREMENTS

D 34 in x H 15 in
D 87 cm x H 39 cm

Stockists

United States

Nationwide

Design Within Reach
Tel +1 800 944 2233
www.dwr.com

YLIGHTING
Tel +1 866 428 9289
www.ylighting.com

New York

DDC
136 Madison Avenue
Tel +1 212 685 0800
www.ddency.com

Designlush
200 Lexington Avenue
Tel +1 212 532 5450
www.designlush.com

The Future Perfect
55 Great Jones Street
Tel +1 212 473 2500
www.thefutureperfect.com

Matter
405 Broome Street
Tel +1 212 343 2600
www.mattermatters.com

Poliform New York
150 East 58th Street
Tel +1 212 421 1800
www.poliformusa.com

Atlanta

Illuminations Lighting
425 Peachtree Hills Ave
NE #3
Tel +1 404 876 1064
www.illumco.com

Austin

Scott+Cooner
2120 E 7th Street
Tel +1 512 480 0436
www.scottcooner.com

Cincinnati

Design Lab
1401 Elm Street
Tel +1 513 620 7299
www.design-lab.com

Dallas

Scott + Cooner
1617 Hi Line Drive, Suite 100
Tel +1 214 748 9838
www.scottcooner.com

Denver

Studio Como
2590 Walnut Street
Tel +1 303 296 1495
www.studiocomo.com

Gallatin Gateway

Earth Elements
12 Penny Lane
Tel +1 406 414 7040
www.earthelements.com

Houston

Poliform Houston
2800 Kirby Drive,
Suite A-210
Tel +1 713 630 6500
www.poliformusa.com

Jackson Hole

Earth Elements
810 West Broadway
Tel +1 307 264 1720
www.earthelements.com

Studio Como
90 East Simpson Avenue
Tel +1 307 735 0020
www.studiocomo.com

Los Angeles

The Future Perfect
Casa Perfect, by appointment
Tel +1 323 202 2025
www.thefutureperfect.com

Poliform Los Angeles
8818 Beverly Blvd
Tel +1 310 271 7836
www.poliformusa.com

Melbourne

Twentieth
8057 Beverly Blvd
Tel +1 323 904 1200
www.twentieth.net

Miami

Poliform Miami
4100 NE 2nd Ave #101
Tel +1 305 573 9950
www.poliformusa.com

San Francisco

The Future Perfect
3085 Sacramento Street
Tel +1 415 932 6508
www.thefutureperfect.com

Seattle

Inform Interiors
1526 Bellevue Avenue
Tel +1 206 622 1608
www.informseattle.com
Tulsa

SR Hughes
3410 S. Peoria, Suite 100
Tel +1 918 742 5515
www.srhughes.com

Washington, DC

Illuminations Inc.
308 Florida Avenue NW
Tel +1 202 783 4888
www.illuminc.com

Utah

Earth Elements
205 Junes Way
Tel +1 406 730 3133
www.earthelements.com

Australia

Brisbane

Space Furniture
10 James St.,
Fortitude Valley
Tel +61 7 3253 6000
www.spacefurniture.com.au

Melbourne

Space Furniture
629 Church Street,
Richmond
Tel +61 3 9426 3000
www.spacefurniture.com.au

Sydney

Space Furniture
84 O'Riordan Street,
Alexandria
Tel +61 2 8339 7588
www.spacefurniture.com.au

Austria

Fügen

Wetscher GmbH
Zillertalstraße 30
Tel +43 (0) 5288 600 - 0
www.wetscher.com

Belguim

Ghent

Obumex
Kortrijksesteenweg 1123
Tel +32 51 70 50 71
www.obumex.be

Canada

Calgary

Lightform
1005 9th Avenue Southeast
Tel +1 403 508 9980
www.lightform.ca

Edmonton

Lightform
10545 124 Street
Tel +1 780 413 9898
www.lightform.ca

Toronto

Hollace Cluny
160 Pears Avenue #203
Tel +1 416 968 7894
www.hollacecluny.ca

Lightform
267 Niagara Street
Tel +1 416 745 5656
www.lightform.ca

Vancouver

Inform Vancouver
50 Water Street
Tel +1 604 682 3868
www.informinteriors.com

Lightform
425 Carrall Street, #2
Tel +1 604 688 7022
www.lightform.ca

China

Beijing

Domus Tiandi
Jinbao Street, Dongcheng
Tel +86 10 8511 6228
www.domustiandi.com

Shanghai

Design Republic
Multiple locations
Tel +86 21 6082 3883
www.thedesignrepublic.com

France

Paris

Le Bon Marché
24 Rue de Sèvres
Tel +33 1 44 39 80 00
www.lebonmarche.com

Silvera
Multiple locations
Tel +33 1 55 35 14 35
www.silvera.fr

Triode
28 Rue Jacob
Tel +33 1 43 29 40 0528
www.triodedesign.com

Finland

Helsinki

Blomer
Neitsytpolku 5
Tel +358 9 6818220
www.blomer.fi

Germany

Aachen

Mathes
Büchel 29-31
Tel +49 (0) 241 - 470301 0
www.mathes.de

Berlin

Dopo Domani
Kantstraße 148
Tel +49 30 688132970
www.knallgraugmbh.de

Berlin

RUBY designliving GmbH
& Co. KG
Julie-Wolffhorn-Str. 1
Tel +49-30-639 68 73 - 30
www.ruby-designliving.de

Hamburg

CLIC Inneneinrichtung
GmbH
Stilwerk, Große Elbstraße 68
Tel +49 40 4 689 689
www.clic.de

Hannover

Steinhoff
Braunschweiger Platz 2
Tel +49 0511 280 76 0
www.steinhoff-einrichtungen.de

Munich

Böhmeler Einrichtunghaus
GmbH Tal 11
Tel +49 (0) 89 2136 0
www.boehmler.de

Wiesloch

Weckesser Wohnen
In the Weinäckern 11
Tel +49 6222 92300
www.weckesser.de

Hong Kong

La Deux
15 Chong Yip Street
Tel +852 2955 7121
www.ladeux.com.hk

Lane Crawford Home
Level One, Pacific Place
88 Queensway, Admiralty
Tel +852 2118 3668
www.lanecrawford.com

Hungary

Budapest

Code Showroom
Nagymező street 9
Tel + 36 1 267 0312
www.codeshowroom.com

India

Mumbai

Sources Unlimited
B402, Dhruv, Gulmohar
Road, J.V.P.D. Scheme, Vile
Parle (W)
Tel +91 22 2620 1700
www.sourcesunlimited.co.in

Italy

Milan

Spotti
Viale Piave, 27
Tel +39 02 781953
www.spotti.com

Latvia

Riga

Krassky
Duntes Iela 11
Tel +371 67 781 400
www.krassky.lv

Mexico

Mexico City

Diez Company
Av. Paseo de las Palmas 520
Lomas
Tel +52 55 20 35 08
www.diezcompany.mx

Netherlands

Amsterdam

Co van der Horst
Binderij 2
Tel +31 020 641 2505
www.covanderhorst.nl

Edha Interieur
Willemsparkweg 5-9
Tel +31 20 673 2401
www.edha-interieur.nl

New Zealand

Auckland

ECC
39 Nugent Street, Grafton
Tel +64 9 379 9680
www.ecc.co.nz

Wellington

ECC
61 Thorndon Quay
Tel +64 4 473 3456
www.ecc.co.nz

Norway

Oslo

Expo Nova
Drammensveien 134
Tel +47 23 13 13 40
www.expo-nova.no

Phillipines

Makati

Poliform / Varenna
219 Nicanor Garcia St
Tel +63 2 804 2776
www.poliform.it

Russia

Moscow

Hall Oscar — Poliform
Artplay, Nizhnyaya
Syromyatnicheskaya Ulica, 10
Tel +7 495 640-75-40
www.halloscar.ru

Krassky
Tel +7 495 181-53-00
www.krassky.ru

Singapore

Space Singapore
77 Bencoolen Street
Tel +65 6415 0000
www.spacefurniture.com.sg

Spain

Madrid

Naharro
Calle Granada 57
Tel +34 915 01 47 49
www.naharro.com

Palma

Aquaquae
Carrer de Lluçmajor 38
Tel +34 971 42 06 00
www.aquaquae.com

Sweden

Stockholm

Nordiska Galleriet
Nybrogatan 11
Tel +46 08 442 83 60
www.nordiskagalleriet.se

Switzerland

Zürich

Roomdresser GmbH
Zeltweg 4
Tel +41 43 317 11 44

Taiwan

Taipei

Bhome Boutique
Multiple locations
Tel +886 2 2395 5055
www.bhome.com.tw

Ukraine

Kyiv

Shadows and Shades
6/1 John Paul II Str.
Tel +00 380 50 310 65 84

United Kingdom

London

SCP
135-139 Curtain Road,
Shoreditch
Tel +44 20 7739 1869
www.scp.co.uk

Credits

P. 13	Joseph De Leo / Designer: Stephanie Waltbillig	P. 151	Gaia Danieli / Courtesy Poliform
P. 18	Sean Litchfield / Designer: Justin Charette	P. 160, 219	Nicole Franzen / Courtesy De La Espada
P. 19	Joseph De Leo / Designer: D'Apostrophe	P. 168	Adrian Tiemens / Designer: Adam Hunter
P. 21, 292	Laurie Black / Designer: Hoedemaker Pfeiffer Architecture + Amy Baker	P. 173	Joseph De Leo / Designer: GRT Architects
P. 24	Vivian Johnson / Designer: Anja Michals	P. 183	Jane Beiles / Designer: Diana Byrnes
P. 25	Image courtesy The Up Studio / Designer: The Up Studio	P. 184	Lauren Coleman / Designer: Cailin Wunder Design
P. 29, 32, 80, 193, 203, 237, 238, 253, 256, 259	Nicole Franzen	P. 187	Joshua McHugh / Designer: Timothy Brown
P. 34, 39, 40, 41, 53, 102, 118, 133, 135, 143, 149, 177, 195, 207, 257	Joseph De Leo	P. 189	Lauren Coleman / Designer: Dumais ID
P. 50	Image courtesy Roll & Hill / Designer: Calder Design Group	P. 195	Image courtesy Patrick Thompson Design / Designer: Patrick Thompson Design
P. 51	Pia Riverola	P. 199	Alexis Toureau / Courtesy Triode
P. 52	Adrian Gaut / Designer: Commune	P. 200	Nicole Franzen / Designer: HOMEWORK
P. 58	Nicole Franzen / Designer: GRT Architects	P. 207	Matthew Millman / Designer: CLB Architects
P. 59	Robert Rios / Designer: MONIOMI Design	P. 215	Jeffrey Schad
P. 62	Amanda Kirkpatrick / Designer: StudioLAB	P. 217	Fran Parente / Designer: Fabio Morozini
P. 63	Laure Joliet / Designer: Scout Regalia	P. 218	Jonny Valiant / Designer: Jeff Lincoln
P. 67, 77, 199	Max Burkhalter / Designer: MKCA	P. 223	Sean Litchfield / Designer: Kelly Rosen
P. 69	Evan Joseph / Designer: Jeffrey Beers	P. 224	Andreas Rentz
P. 73	Ruth Maria Murphy / Designer: Kingston Lafferty Design	P. 245	Chad Falkenberg / Designer: Falken Reynolds
p. 85	Gieves Anderson / Designer: Fredrick Tang Architecture	P. 246	Adam Friedberg / Designer: Laura Krey Design
P. 93, 161, 166	Madeline Tolle / Designer: Rapt Studio	P. 247	Alexis Toureau
P. 96, 165	Ewout Huibers / Designer: BigBrands and Studio Linse	P. 263	Matthew Millman / Designer: CLB Architects
P. 107	Briana Marie / Designer: House of Honey	P. 264	Alexis Toureau / Courtesy Triode
P. 108	Arturo Zavala Haag / Courtesy Triode	P. 266	Kris Tamburello / Designer: RS3 Design
P. 110	Image courtesy Jeffco Development / Designer: Jeffco Development	P. 272	Image courtesy Plain English Design / Designer: Plain English Design
P. 111	Daniele Albright	P. 273	Anson Smart / Designer: Arent & Pyke
P. 113	Sam Angel / Designer: Deborah Berke	P. 276	Hervé Hôte / Designer: David Price
P. 117	Evan Joseph / Designer: NV/da	P. 278	Joshua McHugh / Designer: Frampton Co.
P. 125	Image courtesy Domino Creative / Designer: Domino Creative	P. 279	Matthew Williams / Designer: Studio DB
P. 127	Marili Forastieri / Designer: Daun Curry	P. 284	Michael Wells / Designer: Sara Story Design
P. 128	Elizabeth Felicella	P. 289	Oliver Clarke / Designer: Samantha Todhunter Design
P. 133	Joseph De Leo	P. 293	Aubrie Pick / Designer: Lauren Nelson Design
P. 134	Michael Persico		
P. 139	Adam Macchia / Designer: Baxt Ingui Studio and Tamara Eaton	Product Photography	Joseph De Leo
P. 150	Alexander James / Designer: Catherine Weinstock	Outdoor Photography	Jeffrey Schad

About

Roll & Hill is a design-minded furniture and lighting company based in Brooklyn, NY. Roll & Hill collaborates with some of the most exciting independent designers working today to create a collection of exceptional furnishings. Roll & Hill was founded in 2010 by Jason Miller, whose experience as a designer and producer inspired him to create a company that would harness the talents of independent designers, while offering the benefits more often associated with larger makers.

Roll & Hill is committed to on-demand production, which allows for each piece to be customized to a client's needs. At Roll & Hill's production facilities in Sunset Park, Brooklyn and Grand Rapids, Michigan pieces are made by hand, one at a time.

Roll & Hill's pieces draw from a rich material palette that includes brass, bronze, leather, wood, hand-knotted rope and mouth-blown glass. Roll & Hill's designers often pair historical elements with contemporary forms to create objects that feel familiar, yet totally new.

ROLLANDHILL.COM

GENERAL INQUIRIES

87 34th Street, Unit 11, Brooklyn, NY 11232

T +1 (718) 387 6132

Info@rollandhill.com

SALES INQUIRIES

3 Mercer St, New York, NY 10013

T +1 (718) 387 6132

Sales@rollandhill.com





